

REV	DATE	DESCRIPTION OF CHANGE	ENG
C	09/04/13	SEE DCN SN216A	RJB

SPECIFICATIONS:

MATERIAL:

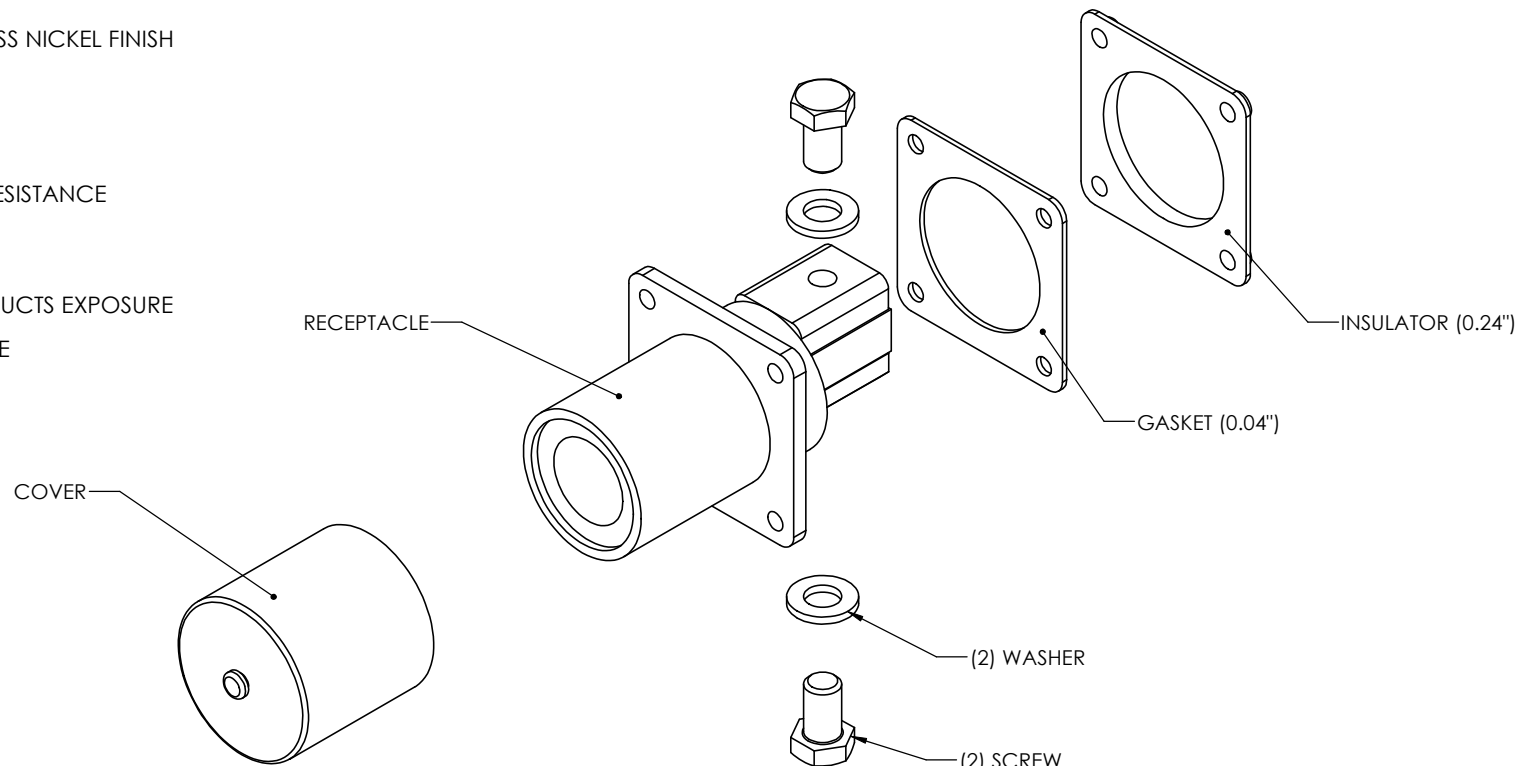
PLUG BODY: MOLDED RUBBER
CONTACTS: COPPER , ELECTROLESS NICKEL FINISH
INSULATOR: MOLDED RUBBER

ELECTRICAL:

24-28 VDC
100 AMPS (LIMITED BY CABLE SIZE)
400 AMPS INTERMITTENT DUTY
0.5 MILLIOHMS MAX. CONTACT RESISTANCE

ENVIROMENTAL:

WATERPROOF
RESISTANCE TO CORROSION
RESISTANCE TO PETROLEUM PRODUCTS EXPOSURE
RESISTANCE TO OZONE EXPOSURE
RESISTANCE TO FUNGUS EXPOSURE



NOTES:

1. MATING CONNECTOR PLUGS: SN-210, SN-215, AND SN-219.
2. MEETS REQUIREMENTS OF MIL-C-62122, NATO STANAG-407.
3. RECOMMENDED MOUNTING HOLE DIAMETER 1.781 / 1.791". RECOMMENDED BOLT HOLE DIAMETER .344 / .354 '.
4. REAR MOUNTING NOT RECOMMENDED.
5. MOUNTING PANEL THICKNESS: UP TO .440".
6. NON METALLIC / NON CONDUCTIVE WASHERS ARE TO BE USED WITH FASTENING HARDWARE.

UNLESS OTHERWISE SPECIFIED:

DIMENSIONS ARE IN: INCHES
TOLERANCES: XX: ± 0.03
.XXX: ± 0.005
ANGULAR: .XX: $\pm 1^\circ$
BREAK EDGES: .005 - .020
FILLETS: .005 - .020
SURFACE FINISH:

GEOMETRIC TOLERANCING
PER: ASME Y14.5 -2009

MATERIAL: SEE DRAWING NOTES

FINISH: SEE DRAWING NOTES

DO NOT SCALE DRAWING

NAME DATE

DRAWN RJB 03/15/13

CHECKED RJB 03/15/13

COMMENTS:

PROPRIETARY AND CONFIDENTIAL
THE INFORMATION CONTAINED IN THIS DRAWING IS THE SOLE PROPERTY OF SUPPLYNET, INC. ANY REPRODUCTION IN PART OR AS A WHOLE WITHOUT THE WRITTEN PERMISSION OF SUPPLYNET INC. IS PROHIBITED.

PART NUMBER: SN-216

SupplyNet

614 CORPORATE WAY
SUITE 8H
VALLEY COTTAGE, NY 10989

TITLE:

**NATO INTERVEHICLE
CONNECTOR**

SIZE

B

DWG. NO.

SN-216

REV

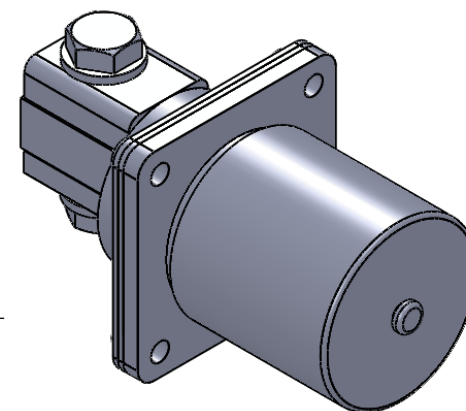
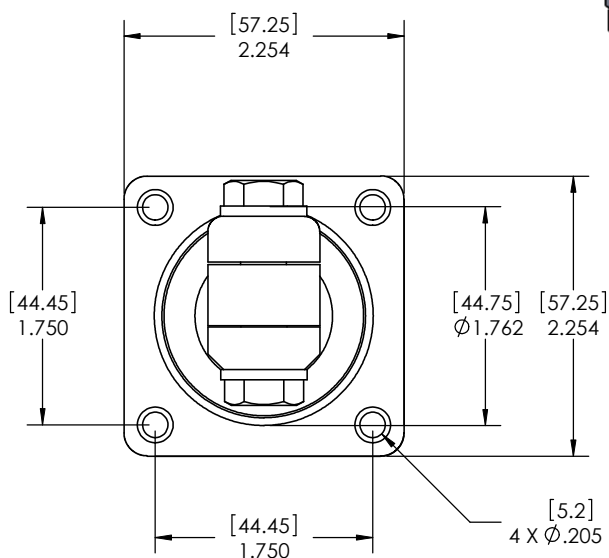
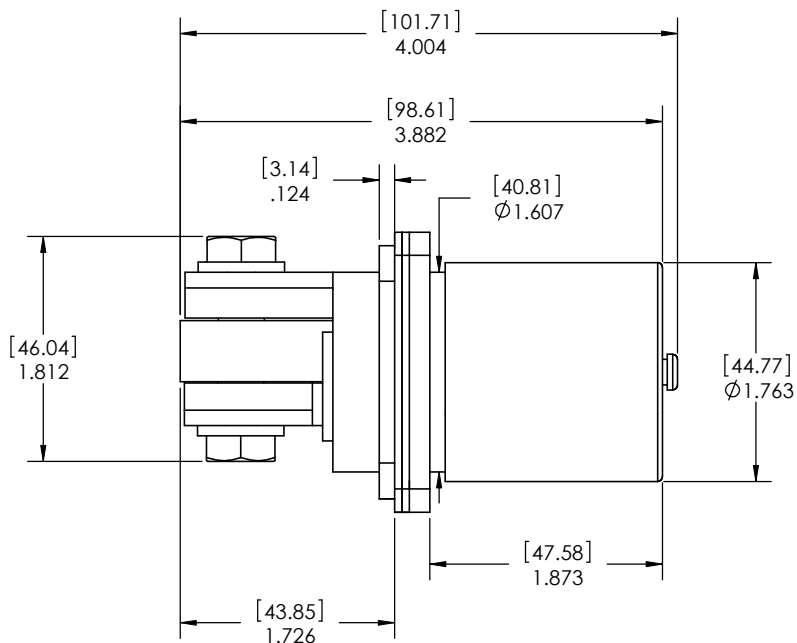
C

SCALE: NA

WEIGHT:

SHEET 1 OF 2

EXPORT CONTROLLED DATA: THESE ITEMS TECHNICAL DATA ARE CONTROLLED BY THE DEPARTMENT OF STATE, INTERNATIONAL TRAFFIC IN ARMS REGULATIONS (ITAR) 22 CFR PARTS 120-130 AND CANNOT BE EXPORTED FROM THE UNITED STATES OR SHARED WITH A FOREIGN NATIONAL WITHOUT PRIOR APPROVAL FROM THE UNITED STATES GOVERNMENT.



PART NUMBER: SN-216

614 CORPORATE WAY
SUITE 8M
VALLEY COTTAGE, NY 10989

TITLE:

NATO INTERVEHICLE CONNECTOR

—

E	DWG. NO.
---	----------

SN-216

REV
C

SCALE: NA

WEIGHT:	
---------	--

SHEET 2 OF 3

PROPRIETARY AND CONFIDENTIAL
THE INFORMATION CONTAINED IN THIS
DRAWING IS THE SOLE PROPERTY OF
SUPPLYNET, INC. ANY REPRODUCTION
IN PART OR AS A WHOLE WITHOUT THE
WRITTEN PERMISSION OF SUPPLYNET INC
IS PROHIBITED

CAGE CODE: 1HJX9