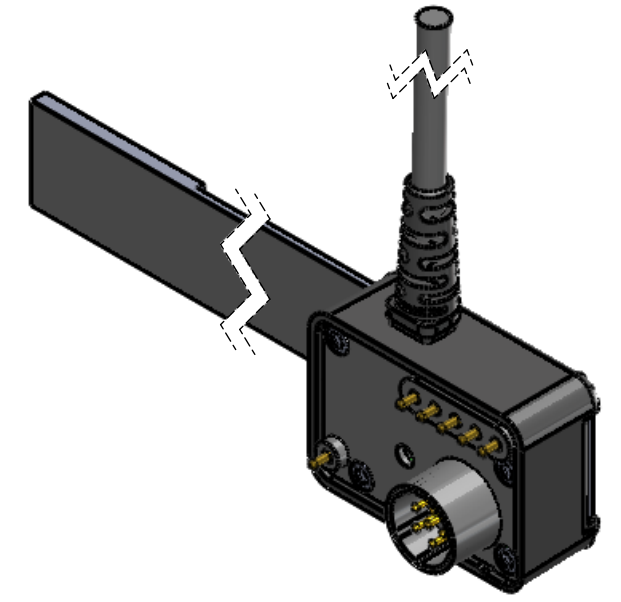
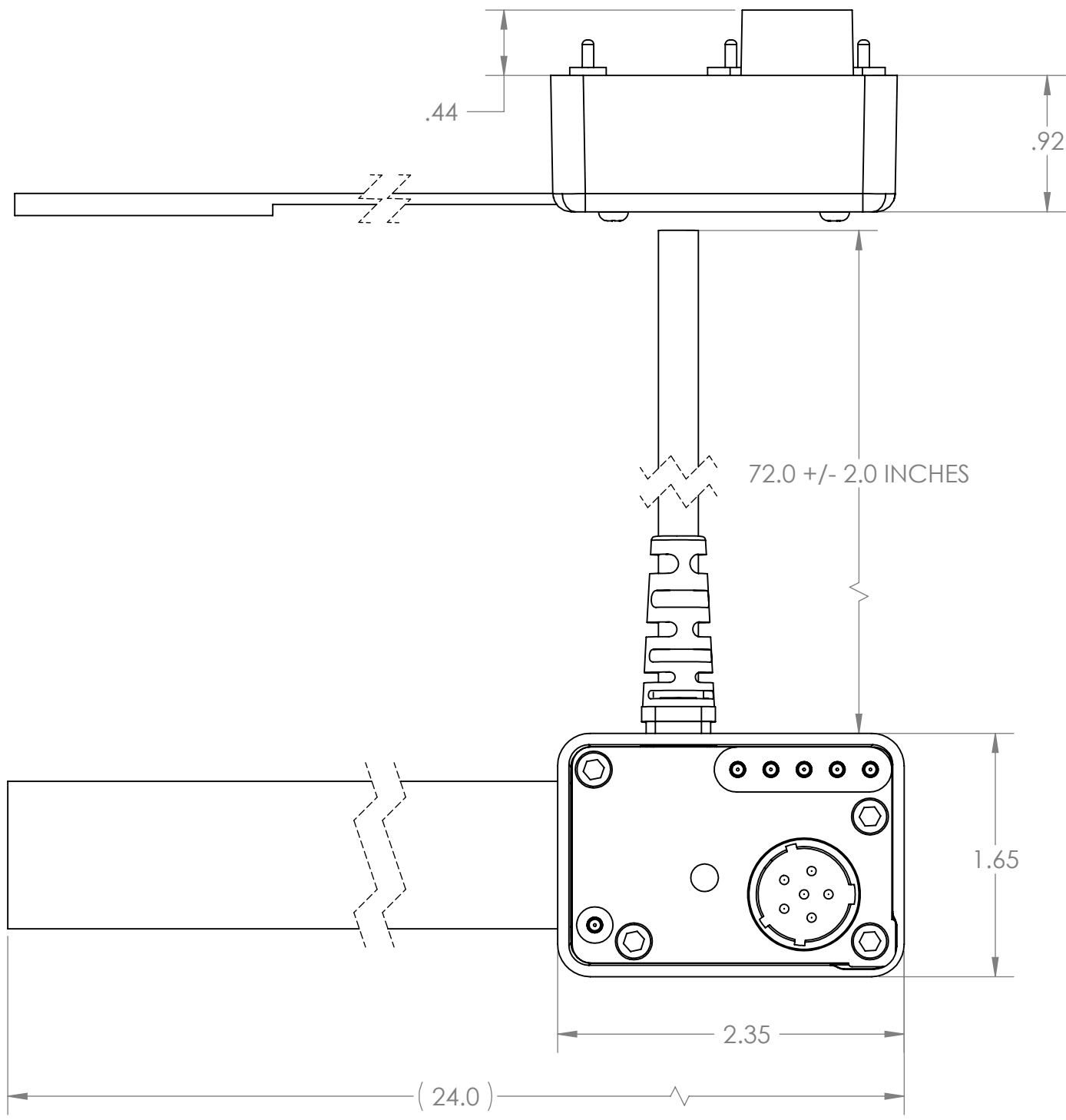


TABEL 1. WIRE RUN LIST		
LOCATION	WIRE GAGE	WIRE COLOR
E1	AWG 16	BLACK
E2	AWG 16	BLACK / WHITE
E3	AWG 16	NC
E4	AWG 16	RED
E5	AWG 16	RED / WHITE
E11	AWG 22	BLUE
E6	AWG 22	BROWN
E7	AWG 22	ORANGE
E8	AWG 22	YELLOW
E9	AWG 22	VIOLET

REV	DATE	DESCRIPTION OF CHANGE	ENG
E	07/30/14	REVISED. SEE DCN SN0019E	TC



BILL OF MATERIALS			
ITEM NUMBER	PART NUMBER	QTY.	DESCRIPTION
1	51354	74.0"	CABLE
2	SN0017-3-A	1	CONNECTOR ASSY.
3	SN0008	1	PCB (CONFORMAL COATED)
4	SN0009	6	POGO PIN
5	SN0010-2	1	ENCLOSURE
6	1027979	1	SNAP RING
7	SN0012	4	SCREW
8	SN0013	1	VELCRO STRAP
9	SN0014	2	SCREW
10	SN0015	2	WASHER
11	SN0018	6	POGO PIN CAPS
12	1027976	1	GASKET
13	C&N Part #	1	STAIN RELIEF / GROMMETT
14	SNW001	1	STAINLESS STEEL SHIM

NOTES:

- 1) SOLDERING IAW IPC-J-STD-001 CLASS II AS APPLICABLE.
- 2) CABLE ASSEMBLIES TO BE TESTED 100% FOR CONTINUITY, SHORTS, AND INSULATION RESISTANCE (250 VDC @ 100MOHM MINIMUM).
- 3) IDENTIFICATION: BAG AND IDENTIFY ON THE PACKAGING THE FOLLOWING INFORMATION FOR EACH PART DELIVERED. UOS PART MARKING ON WIRE IS PROHIBITED.  
**PN: CONN-BB2590SMBUS REV X (REV MARKING PER PO)**  
**CAGE CODE: 1HJX9**  
**DATE OF MFGR: MM/YY**
- 4) SUPPLYNET FILE NUMBER SN0019
- 5) MANUFACTURE AND INSPECT IAW IPC/WHMA A-620 CLASS 2.
- 6) WIRE PER TABLE 1. PCB WIRING LOCATIONS ARE LOCATED ON SHEET 2
- 7) PCB MUST BE CONFORMAL COATED

UNLESS OTHERWISE SPECIFIED:  
 DIMENSIONS ARE IN: INCHES  
 TOLERANCES: .XX: ± 0.03  
 .XXX: ± 0.005  
 ANGULAR: .X°: 1°  
 .XX°: 0.5°  
 BREAK EDGES: .005 - .020  
 FILLETS: .005 - .020  
 SURFACE FINISH:  
 GEOMETRIC TOLERANCING PER: ASME Y14.5-2009  
 MATERIAL: SEE DRAWING NOTES  
 FINISH: SEE DRAWING NOTES  
 DO NOT SCALE DRAWING

	NAME	DATE
DRAWN	RJB	05/05/14
CHECKED	RJB	05/05/14
COMMENTS:		

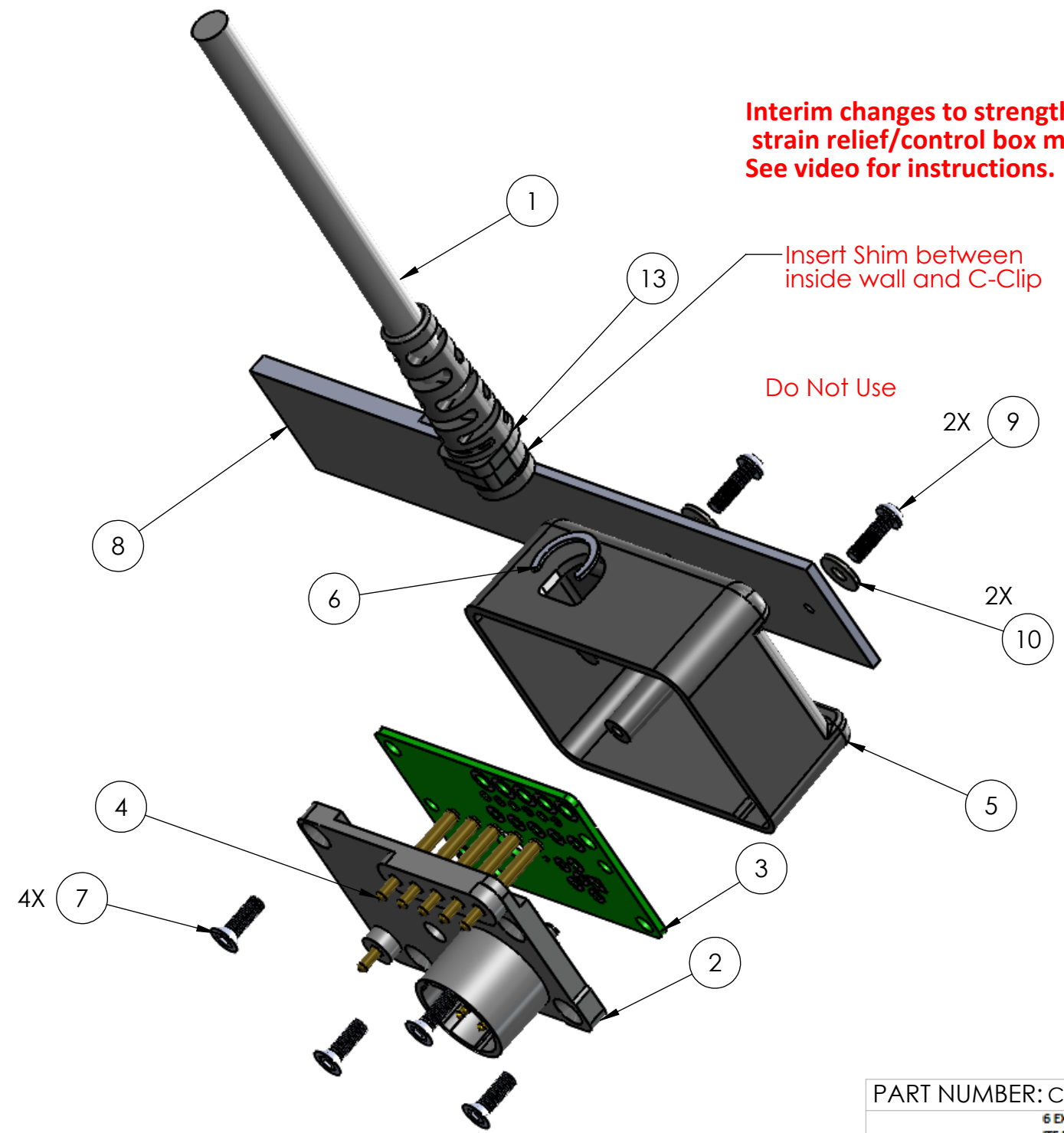
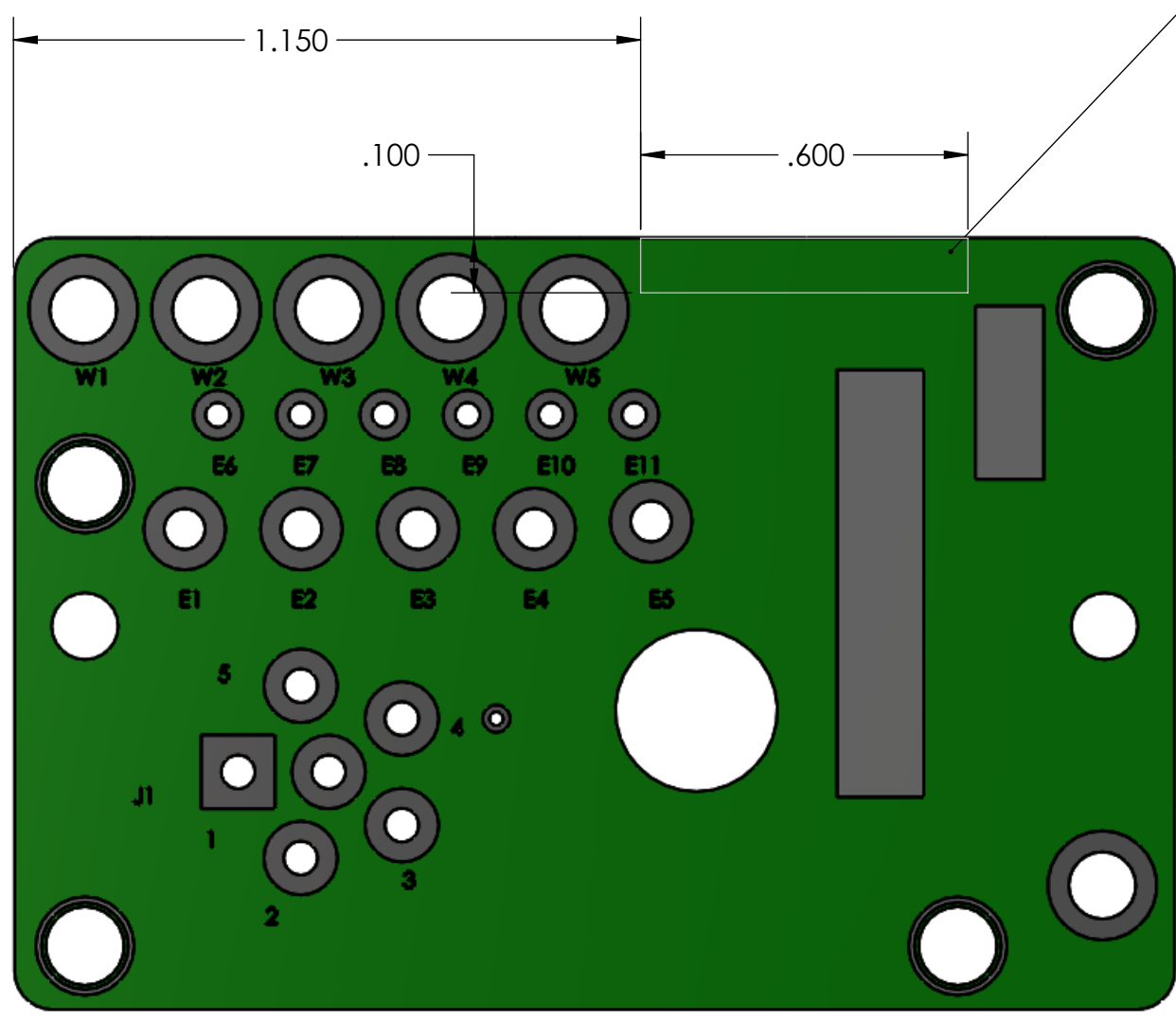
PART NUMBER: CONN-BB2590SMBUS

**SupplyNet** 706 EXECUTIVE BLVD. SUITE B VALLEY COTTAGE, NY 10989

TITLE: **CONNECTOR ASSEMBLY**

SIZE <b>B</b>	DWG. NO. CONN-BB2590SMBUS	REV <b>E</b>
SCALE: NA	WEIGHT:	SHEET 1 OF 2

**CAGE CODE: 1HJX9**



PART NUMBER: CONN-BB2590 SMBUS  
 6 EXECUTIVE BLVD.  
 ITE B  
 LLEY COTTAGE, NY 10989

TITLE:  
**CONNECTOR ASSEMBLY**

SIZE <b>B</b>	DWG. NO. CONN-BB2590SMBUS	REV <b>E</b>
------------------	------------------------------	-----------------

**PROPRIETARY AND CONFIDENTIAL**  
 THE INFORMATION CONTAINED IN THIS DRAWING IS THE SOLE PROPERTY OF SUPPLYNET, INC. ANY REPRODUCTION IN PART OR AS A WHOLE WITHOUT THE WRITTEN PERMISSION OF SUPPLYNET INC. IS PROHIBITED.

CAGE CODE: 1HJX9    SCALE: NA    WEIGHT:    SHEET 2 OF 2