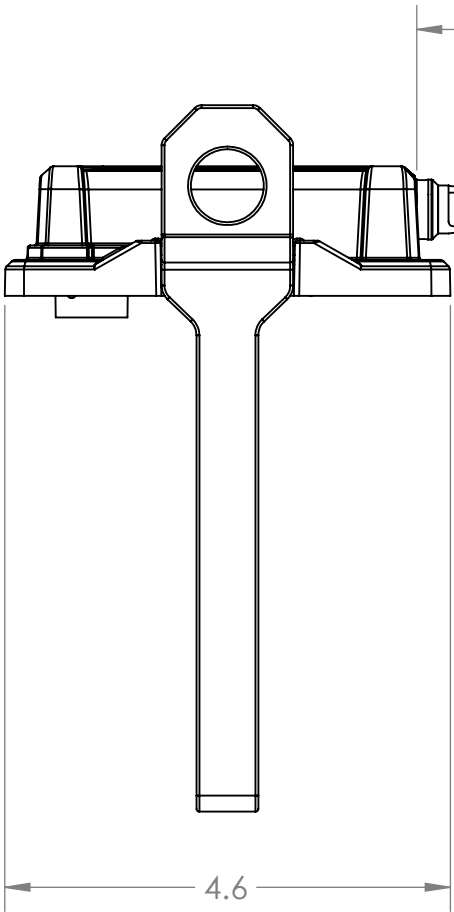
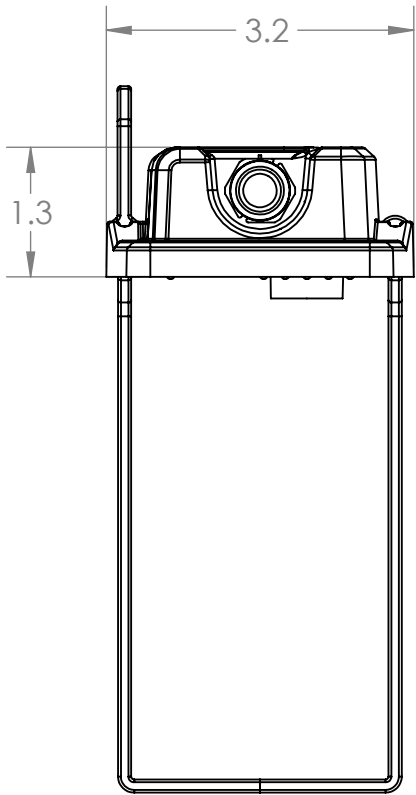


PART NUMBER DESCRIPTION

SN-404-12-XX

= "L" CABLE LENGTH IN FEET.
REF. TABLE1 OR 2.



CABLE OUTPUT
4 POWER CONDUCTORS
WITH SM BUS SIGNALS

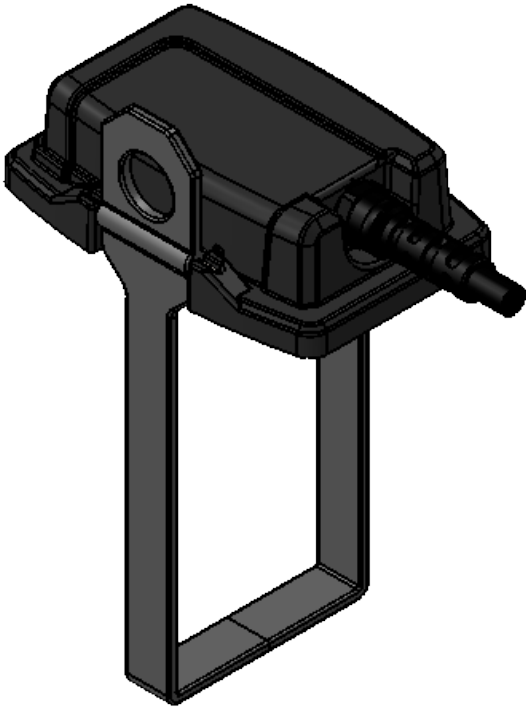


TABLE 1 (12VDC OUTPUT)	
PART NUMBER & PART MARKING	"L" DIMENSION (INCHES)
SN-404-12-03	36
SN-404-12-06	72
SN-404-12-08	96
SN-404-12-10	120
SN-404-12-12	144
SN-404-12-18	216
SN-404-12-20	240
SN-404-12-25	300
SN-404-12-30	360

NOTES:

- CABLE LENGTH PER PART NUMBER DESCRIPTION. SEE TABLE 1
- ELECTRICAL: ASSEMBLY SHALL 100% TESTED FOR CONTINUITY, SHORTS AND INSULATION RESISTANCE (100 MEGOHMS)
- PIN TO PIN RESISTANCE SHALL NOT EXCEED 2.0 OHMS.
- WIRE FUNCTION: SEE TABLE 3.
- SOLDERING: IAW IPC-J-STD-001 CLASS II AS APPLICABLE.
- IDENTIFICATION: PLACE PART IN PLASTIC BAG AND LABEL BAG WITH THE FOLLOWING INFORMATION:
PN: SN-404-12-XX REV X (REV MARKING PER PO & PN PER DESCRIPTION)
CAGE CODE: 1HJX9
DATE OF MFGR: MM/YY

UNLESS OTHERWISE SPECIFIED:			
DIMENSIONS ARE IN: INCHES	DRAWN	NAME	DATE
TOLERANCES: .XX: ± 0.03	TC	TC	3/10/16
.XXX: ± 0.005	CHECKED	RJB	3/10/16
ANGULAR: .X°: 1°	COMMENTS:		
.XX°: 0.5°			
BREAK EDGES: .005 - .020			
FILLETS: .005 - .020			
SURFACE FINISH:	PROPRIETARY AND CONFIDENTIAL THE INFORMATION CONTAINED IN THIS DRAWING IS THE SOLE PROPERTY OF SUPPLYNET, INC. ANY REPRODUCTION IN PART OR AS A WHOLE WITHOUT THE WRITTEN PERMISSION OF SUPPLYNET INC. IS PROHIBITED.		
GEOMETRIC TOLERANCING PER: ASME Y14.5 -2009			
MATERIAL: SEE DRAWING NOTES			
FINISH: SEE DRAWING NOTES			
DO NOT SCALE DRAWING	CAGE CODE: 1HJX9		

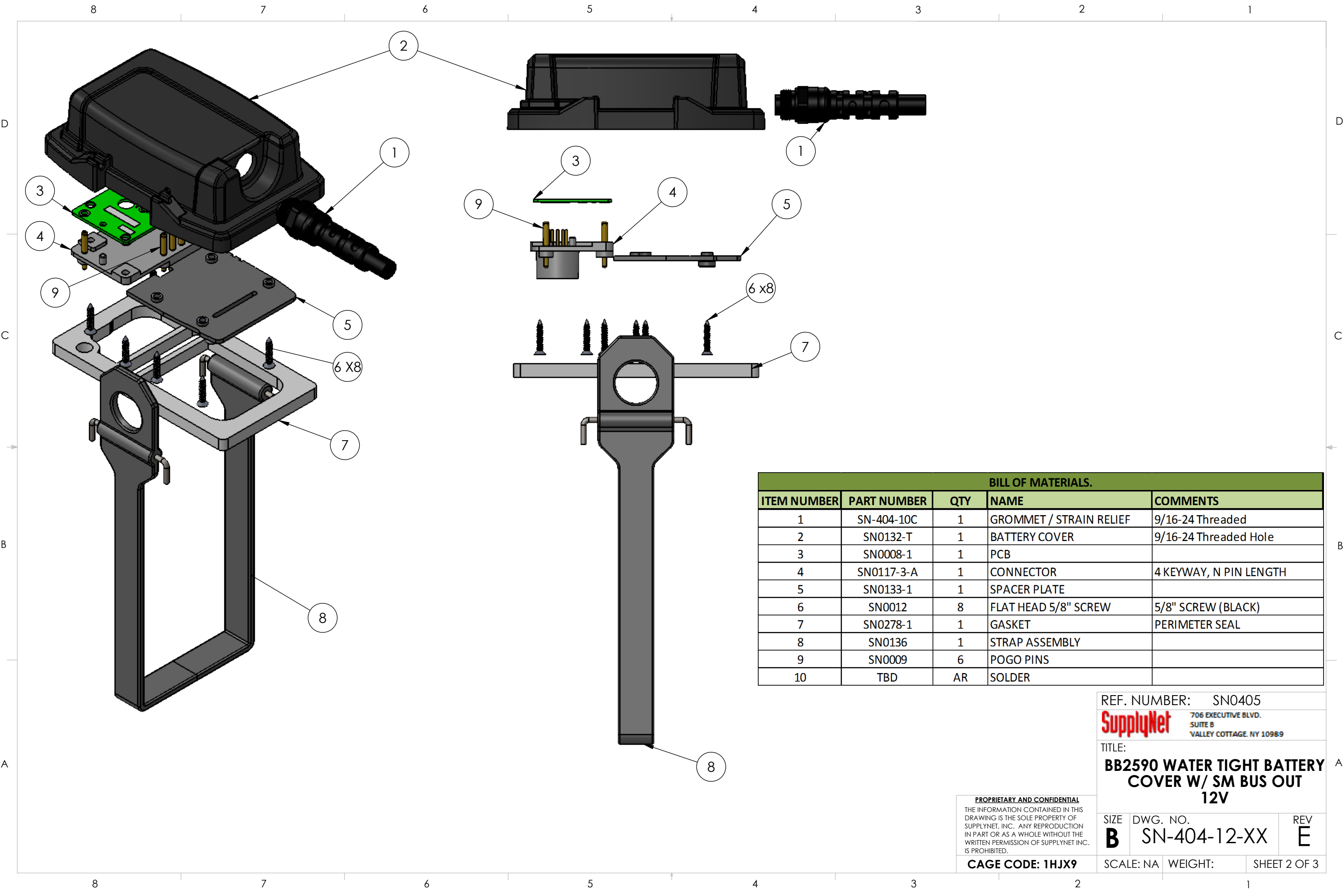
REF. NUMBER: SN0405

SupplyNet 706 EXECUTIVE BLVD.
SUITE B
VALLEY COTTAGE, NY 10989

TITLE:
BB2590 WATER TIGHT BATTERY COVER W/ SM BUS OUT

SIZE	DWG. NO.	REV
B	SN-404-12-XX	E

SCALE: NA WEIGHT: SHEET 1 OF 3



BILL OF MATERIALS.				
ITEM NUMBER	PART NUMBER	QTY	NAME	COMMENTS
1	SN-404-10C	1	GROMMET / STRAIN RELIEF	9/16-24 Threaded
2	SN0132-T	1	BATTERY COVER	9/16-24 Threaded Hole
3	SN0008-1	1	PCB	
4	SN0117-3-A	1	CONNECTOR	4 KEYWAY, N PIN LENGTH
5	SN0133-1	1	SPACER PLATE	
6	SN0012	8	FLAT HEAD 5/8" SCREW	5/8" SCREW (BLACK)
7	SN0278-1	1	GASKET	PERIMETER SEAL
8	SN0136	1	STRAP ASSEMBLY	
9	SN0009	6	POGO PINS	
10	TBD	AR	SOLDER	

PROPRIETARY AND CONFIDENTIAL
THE INFORMATION CONTAINED IN THIS
DRAWING IS THE SOLE PROPERTY OF
SUPPLYNET, INC. ANY REPRODUCTION
IN PART OR AS A WHOLE WITHOUT THE
WRITTEN PERMISSION OF SUPPLYNET INC.
IS PROHIBITED.

CAGE CODE: 1HJX9

REF. NUMBER: SN0405
SupplyNet 706 EXECUTIVE BLVD.
SUITE B
VALLEY COTTAGE, NY 10989
TITLE:
**BB2590 WATER TIGHT BATTERY
COVER W/ SM BUS OUT
12V**

SIZE B	DWG. NO. SN-404-12-XX	REV E
------------------	---------------------------------	-----------------

SCALE: NA	WEIGHT:	SHEET 2 OF 3
-----------	---------	--------------

