

PART NUMBER DESCRIPTION

SN-404-VV-XX

= "L" CABLE LENGTH IN FEET.
REF. TABLE1 OR 2.

12 = 12VDC OUTPUT. REF TABLE 3
24 = 24VDC OUTPUT. REF TABLE 4

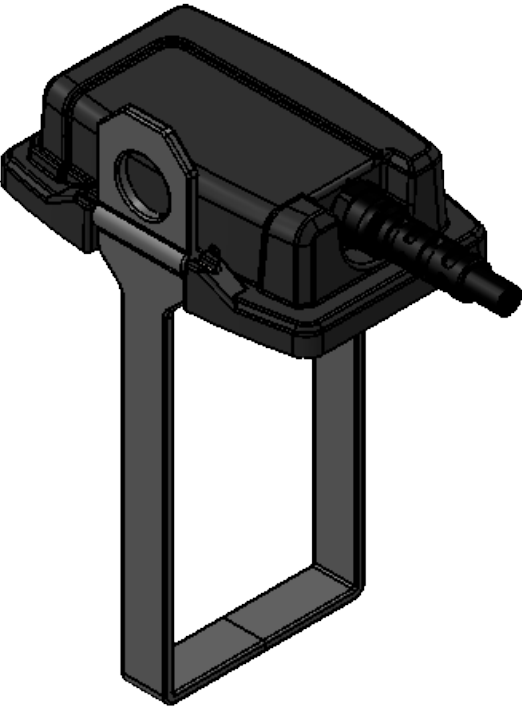
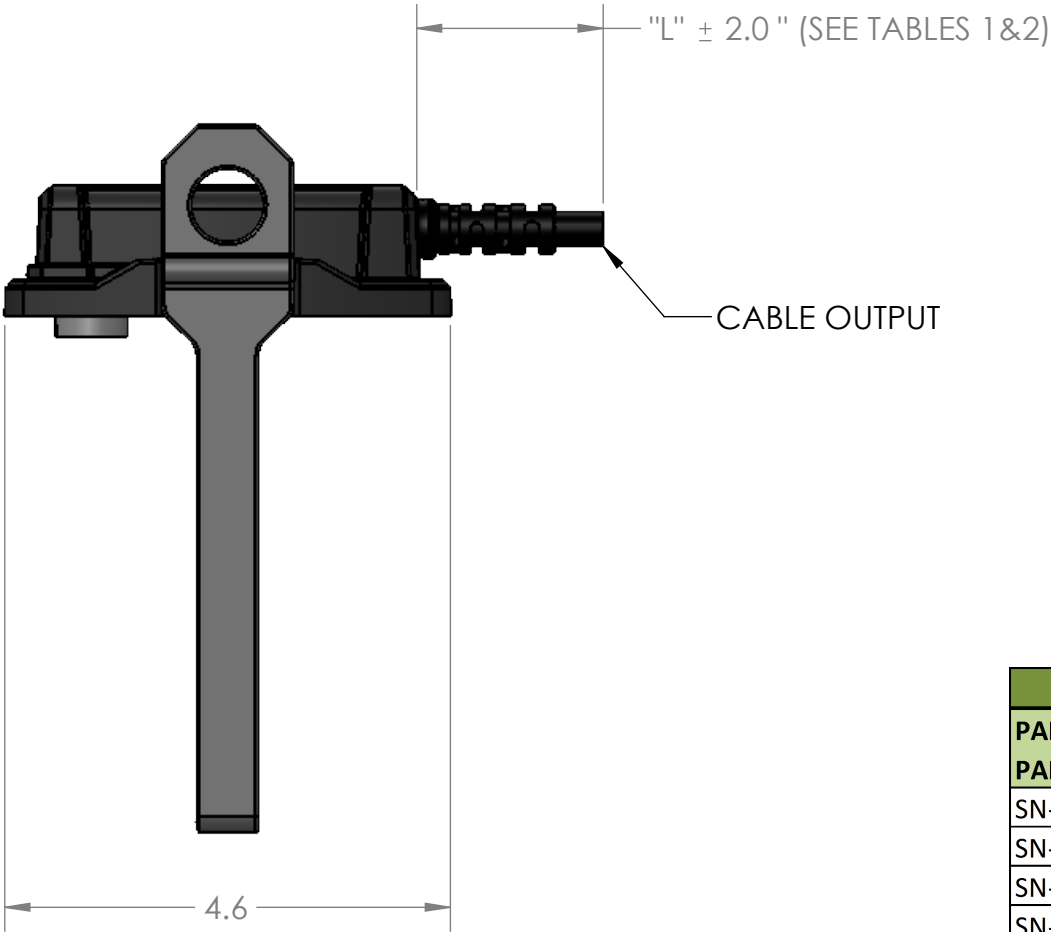
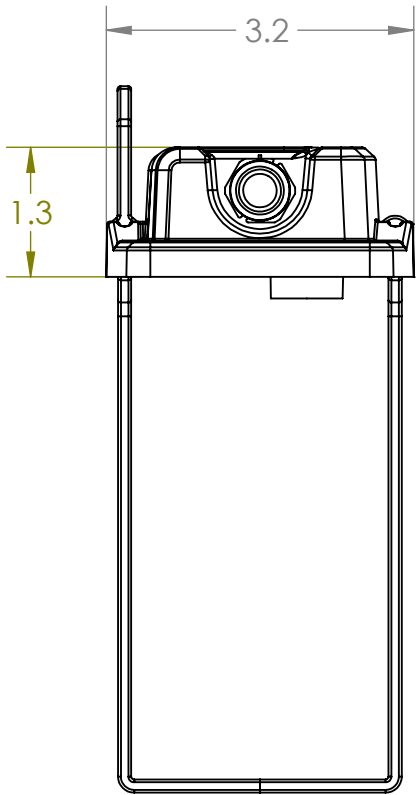
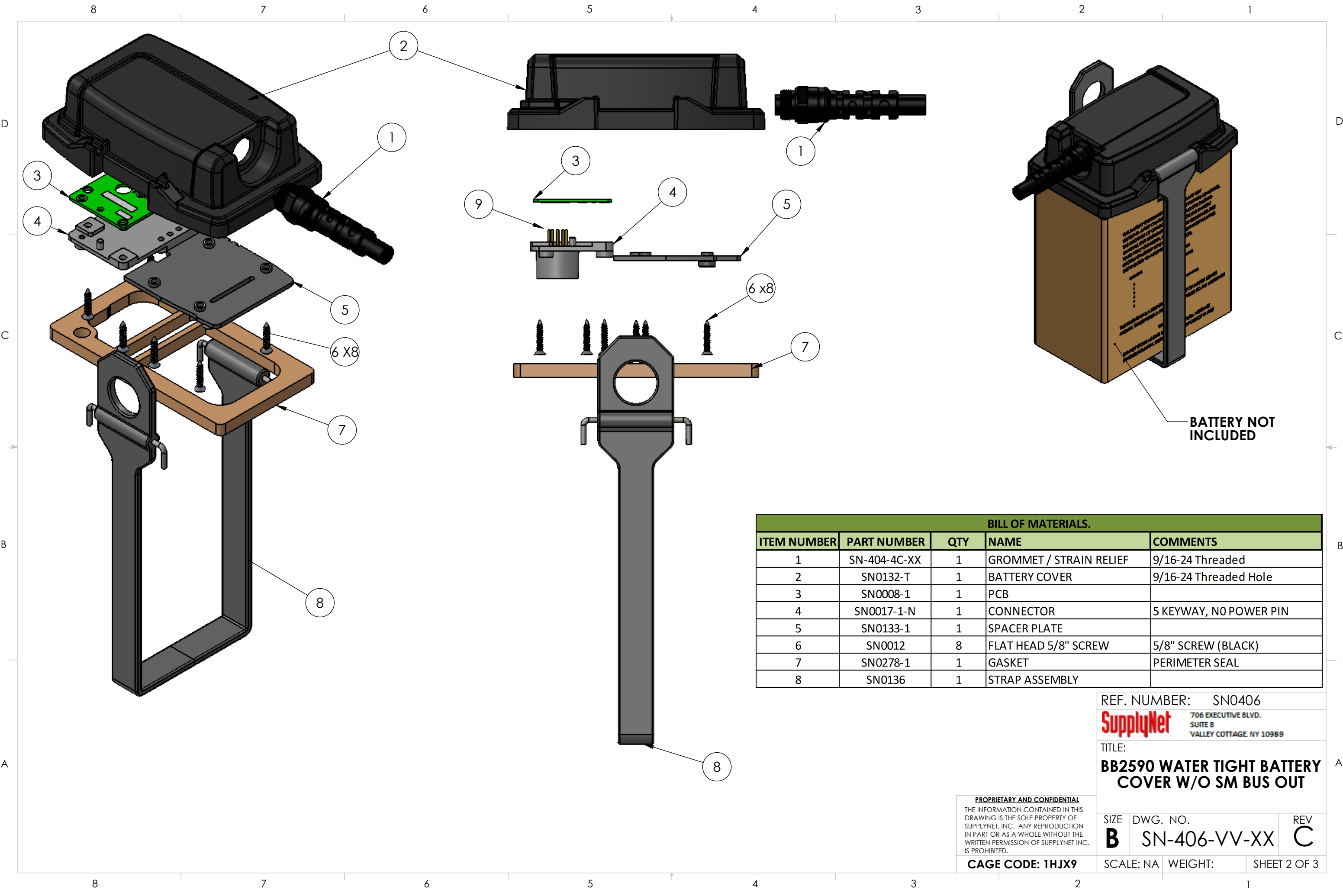


TABLE 1 (12VDC OUTPUT)		TABLE 2 (24VDC OUTPUT)	
PART NUMBER & PART MARKING	"L" DIMENSION (INCHES)	PART NUMBER & PART MARKING	"L" DIMENSION (INCHES)
SN-406-12-03	36	SN-406-24-03	36
SN-406-12-06	72	SN-406-24-06	72
SN-406-12-08	96	SN-406-24-08	96
SN-406-12-10	120	SN-406-24-10	120
SN-406-12-12	144	SN-406-24-12	144
SN-406-12-18	216	SN-406-24-18	216
SN-406-12-20	240	SN-406-24-20	240
SN-406-12-25	300	SN-406-24-25	300
SN-406-12-30	360	SN-406-24-30	360

NOTES:

- CABLE LENGTH PER PART NUMBER DESCRIPTION. SEE TABLE 1 OR 2.
- ELECTRICAL: ASSEMBLY SHALL 100% TESTED FOR CONTINUITY, SHORTS AND INSULATION RESISTANCE (100 MEGOHMS)
- PIN TO PIN RESISTANCE SHALL NOT EXCEED 2.0 OHMS.
- WIRE FUNCTION: SEE TABLE 3 OR 4.
- SOLDERING: IAW IPC-J-STD-001 CLASS II AS APPLICABLE.
- IDENTIFICATION: PLACE PART IN PLASTIC BAG AND LABEL BAG WITH THE FOLLOWING INFORMATION:
PN: SN-406-VV-XX REV X (REV MARKING PER PO & PN PER DESCRIPTION)
CAGE CODE: 1HJX9
DATE OF MFGR: MM/YY

UNLESS OTHERWISE SPECIFIED:		NAME	DATE	<div>SupplyNet</div> <div>706 EXECUTIVE BLVD. SUITE B VALLEY COTTAGE, NY 10989</div>			
DIMENSIONS ARE IN: INCHES TOLERANCES: .XX: ± 0.03 .XXX: ± 0.005 ANGULAR: .X°: 1° .XX°: 0.5° BREAK EDGES: .005 - .020 FILLET: .005 - .020 SURFACE FINISH: GEOMETRIC TOLERANCING PER: ASME Y14.5 -2009 MATERIAL: SEE DRAWING NOTES FINISH: SEE DRAWING NOTES DO NOT SCALE DRAWING	DRAWN	TC	3/10/16	TITLE: BB2590 WATER TIGHT BATTERY COVER W/O SM BUS OUT			
	CHECKED	RJB	3/10/16				
	COMMENTS:	<div>PROPRIETARY AND CONFIDENTIAL</div> <div>THE INFORMATION CONTAINED IN THIS DRAWING IS THE SOLE PROPERTY OF SUPPLYNET, INC. ANY REPRODUCTION IN PART OR AS A WHOLE WITHOUT THE WRITTEN PERMISSION OF SUPPLYNET INC. IS PROHIBITED.</div>		SIZE	DWG. NO.	REV	
				B	SN-406-VV-XX	C	
	CAGE CODE: 1HJX9			SCALE: NA	WEIGHT:	SHEET 1 OF 3	



BILL OF MATERIALS.				
ITEM NUMBER	PART NUMBER	QTY	NAME	COMMENTS
1	SN-404-4C-XX	1	GROMMET / STRAIN RELIEF	9/16-24 Threaded
2	SN0132-T	1	BATTERY COVER	9/16-24 Threaded Hole
3	SN0008-1	1	PCB	
4	SN0017-1-N	1	CONNECTOR	5 KEYWAY, NO POWER PIN
5	SN0133-1	1	SPACER PLATE	
6	SN0012	8	FLAT HEAD 5/8" SCREW	5/8" SCREW (BLACK)
7	SN0278-1	1	GASKET	PERIMETER SEAL
8	SN0136	1	STRAP ASSEMBLY	

REF. NUMBER: SN0406

SupplyNet 706 EXECUTIVE BLVD.
SUITE B
VALLEY COTTAGE, NY 10989

TITLE:
BB2590 WATER TIGHT BATTERY COVER W/O SM BUS OUT

PROPRIETARY AND CONFIDENTIAL
THE INFORMATION CONTAINED IN THIS DRAWING IS THE SOLE PROPERTY OF SUPPLYNET, INC. ANY REPRODUCTION IN PART OR AS A WHOLE WITHOUT THE WRITTEN PERMISSION OF SUPPLYNET INC. IS PROHIBITED.

CAGE CODE: 1HJX9

SIZE **B** DWG. NO. **SN-406-VV-XX** REV **C**

SCALE: NA WEIGHT: SHEET 2 OF 3

