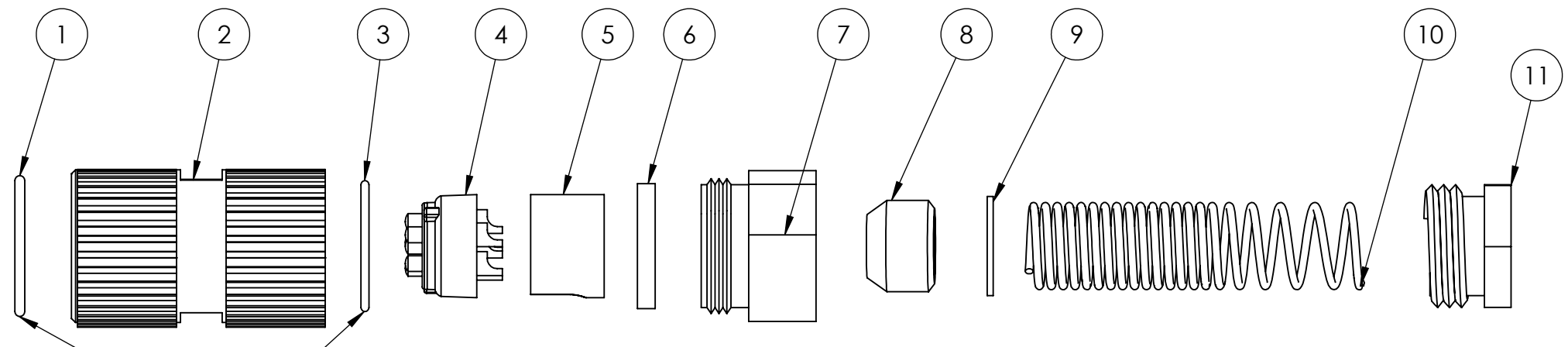
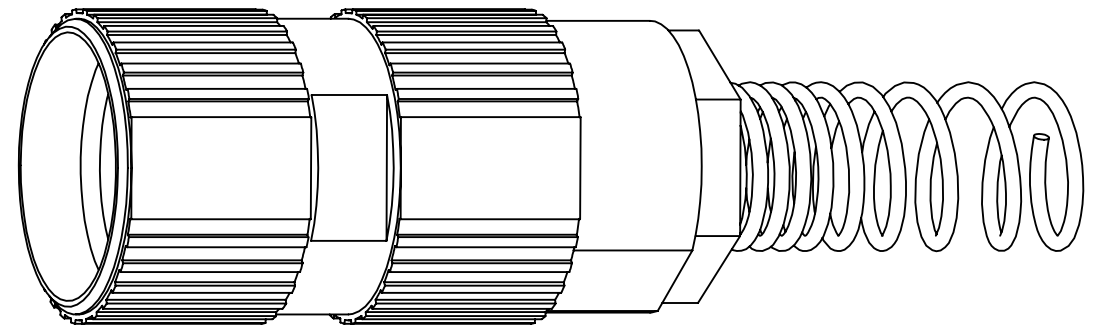
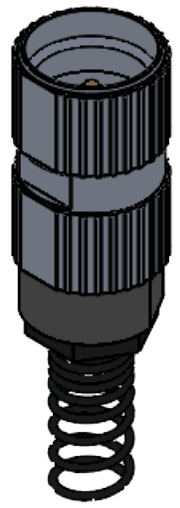


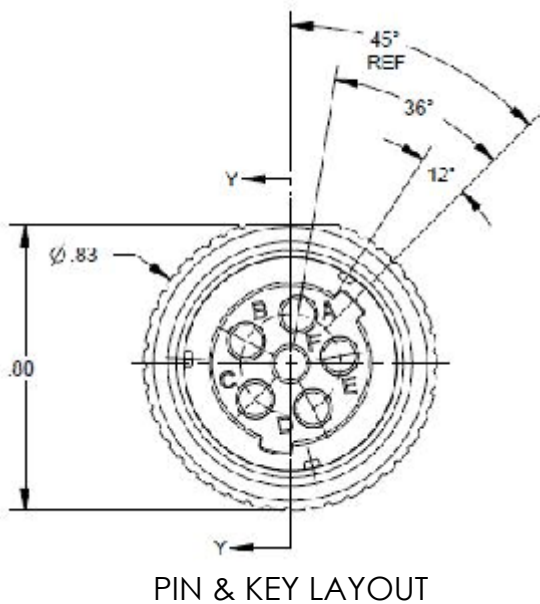
REV	DATE	DESCRIPTION OF CHANGE	ENG
C	9/23/21	UPDATED DWG FORMATTING	MOB



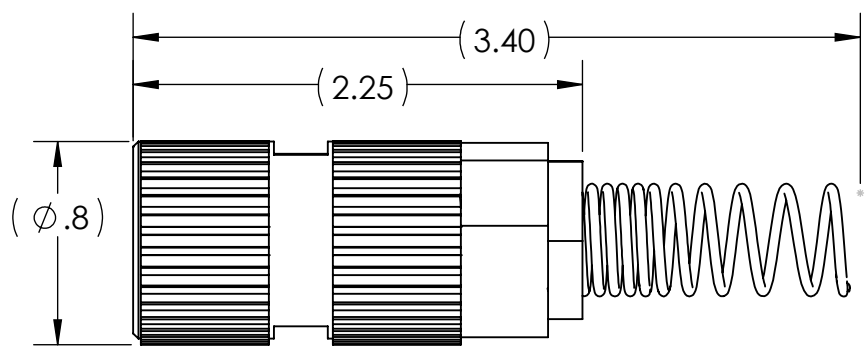
O-RINGS FIT INSIDE SHELL  
SEE NOTE 2



## ASSEMBLED VIEW



ITEM NO.	QTY.	DESCRIPTION	NOTES
1	1	O-RING (0.72Ø X 0.50)	FITS INSIDE SHELL
2	1	SHELL (0.80Ø X 1.31)	303 SS & NEOPRENE
3	1	O-RING (0.62Ø X 0.040)	FITS INSIDE SHELL
4	1	INSERT PIN ASSEMBLY	DIALLPHTHALATE, TYPE SDGF & GOLD PLATED BRASS 6PIN
5	1	PLASTIC SLEEVE (0.51Ø X 0.36)	NYLON
6	1	RUBBER WASHER (0.60Ø X 0.090)	
7	1	NUT ADAPTOR	ALUMINUM ALLOY ANODIZED BLACK
8	1	COMPRESSION GROMMET (0.46Ø X 0.25)	CAPTURES AND PROVIDES STRAIN RELIEF WHEN INSTALLED AND TORQUED ID .250" +/- .10"
9	1	STEEL WASHER (0.50Ø X 0.030)	STAINLESS STEEL
10	1	SPRING	302 STAINLESS STEEL
11	1	CABLE NUT	ALUMINUM ALLOY ANODIZED BLACK



NOTES:  
 1. ITEM NO.4 CAN COME WITH OR WITHOUT SOLDERCUP.  
 2. ITEM NO.1 & ITEM NO.3 O-RINGS MAY BE INSTALLED OR SUPPLIED SEPERATELY.

UNLESS OTHERWISE SPECIFIED:  
 DIMENSIONS ARE IN: INCHES  
 TOLERANCES: .XX: ± 0.03  
 .XXX: ± 0.005  
 ANGULAR: .X°: 1°  
 .XX°: 0.5°  
 BREAK EDGES: .005 - .020  
 FILLETS: .005 - .020  
 SURFACE FINISH:  
 GEOMETRIC TOLERANCING  
 PER: ASME Y14.5-2009  
 MATERIAL: SEE DRAWING NOTES  
 FINISH: SEE DRAWING NOTES  
 DO NOT SCALE DRAWING

	NAME	DATE
DRAWN	RJB	02/26/13
CHECKED	RJB	02/26/13
COMMENTS:		

PART NUMBER: U-329/U

**SupplyNet** 706 EXECUTIVE BLVD.  
SUITE B  
VALLEY COTTAGE, NY 10989

TITLE:  
**U-329/U CONNECTOR ASSEMBLY. 6 PIN ADIO**

SIZE	DWG. NO.	REV
<b>B</b>	U-329/U	<b>C</b>

SCALE: NA WEIGHT: SHEET 1 OF 1

**CAGE CODE: 1HJX9**