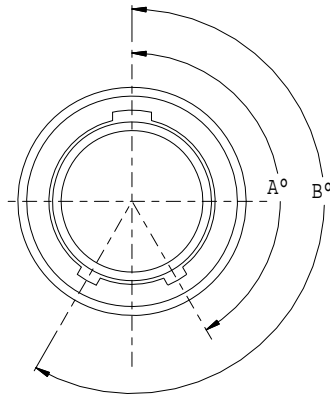
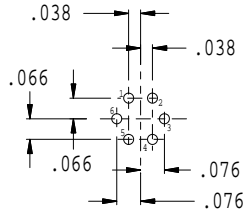


TABLE I		
ALTERNATE KEY AND KEYWAY POSITION		
POSITION	A°	B°
N	150°	210°
X	75°	210°
Y	95°	230°
Z	140°	275°

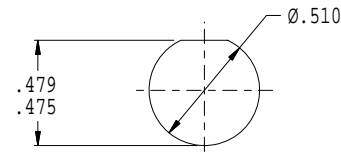


NORMAL AND ALTERNATE POSITION
KEY ROTATION
 FACE VIEW OF RECEPTACLE
 AS VIEWED FROM ENGAGING END

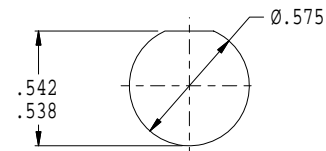


ARRANGEMENT NO. 6-6
 6 #23 CONTACTS

REVISIONS			
SYM.	DESCRIPTION	DATE	APPROVED
	SEE SHEET 1		



RECOMMENDED PANEL CUTOUT FOR
 REAR MOUNT JAM NUT RECEPTACLE



RECOMMENDED PANEL CUTOUT FOR
 FRONT MOUNT JAM NUT RECEPTACLE

PART NUMBER DEVELOPMENT

EXAMPLE: 807-216 - 07 ZNU 6-6 S N B

CONNECTOR SERIES _____

SHELL STYLE _____
 00 = JAM NUT RECEPTACLE, FRONT MOUNT
 01 = IN-LINE RECEPTACLE
 07 = JAM NUT RECEPTACLE, REAR MOUNT.

CLASS _____

SHELL SIZE/INSERT ARRANGEMENT NO. _____

CONTACT STYLE _____
 S = SOCKET, SOLDER CUP
 D = SOCKET, PC TAIL
 P = PIN, SOLDER CUP
 C = PIN, PC TAIL

KEY POSITION (SEE TABLE I) _____
 N = NORMAL
 X = POSITION X
 Y = POSITION Y
 Z = POSITION Z

ADAPTER _____
 B = MOLDING, BANDING ADAPTER (FOR 01 SHELL STYLE ONLY)
 (REF: 809-025; OMIT FOR NONE)

THIS COPYRIGHTED DOCUMENT IS THE PROPERTY OF GLENNAIR, INC. AND IS FURNISHED ON THE CONDITION THAT IT IS NOT TO BE DISCLOSED, REPRODUCED IN WHOLE OR IN PART, OR USED TO SOLICIT QUOTATIONS FROM COMPETITIVE SOURCES, OR USED FOR MANUFACTURE BY ANYONE OTHER THAN GLENNAIR, INC. WITHOUT WRITTEN PERMISSION FROM GLENNAIR, INC. THE INFORMATION HEREIN HAS BEEN DEVELOPED AT GLENNAIR'S EXPENSE AND MAY BE USED FOR ENGINEERING EVALUATION AND INCORPORATION INTO TECHNICAL SPECIFICATIONS AND OTHER DOCUMENTS WHICH SPECIFY PROCUREMENT OF PRODUCTS FROM GLENNAIR, INC.

UNLESS OTHERWISE SPECIFIED	DRAWN	JLT	07/19/04	GLENNAIR, INC. CAD 1997
DIMENSIONS ARE IN INCHES	CHECK			
TOLERANCES:	ENGR	JLT	07/19/04	
FRACTIONS ± 1/16	<i>J. L. Brown</i> APPROVED			1211 AIR WAY - GLENDALE - CALIFORNIA 91201
DECIMALS .XX ± .010 .XXX ± .005	<i>D. Brown</i> APPROVED			CONNECTOR RECEPTACLE, PUSH/PULL TYPE. #23 CONTACTS, PC TAIL/SOLDER CUP, SHELL SIZE 6, 15 LB PULL OUT
ANGLES ± 1°	DO NOT SCALE THIS DRAWING			CODE IDENT. NO. 06324
B/F 3376	P/C 800	NON REPARABLE COMMERCIAL ITEM	SCALE N/A	SIZE C
			WEIGHT N/A	807-216
			SHEET 2 OF 2	REV. J