

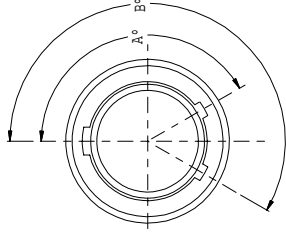
REVISIONS			
SYM.	DESCRIPTION	DATE	APPROVED
A	RELEASED PER DCM 25139, ADDED COPYRIGHT STATEMENT	04/01/08	ACM
B	REVISED PER DCM 32303	5/4/09	CI
C	REVISED PER DCM 39394	7/13/11	JOH

TABLE I	
ALTERNATE KEY AND KEYWAY POSITION	POSITION
N	150° ±10°
X	75° ±10°
Y	95° ±30°
Z	140° ±75°

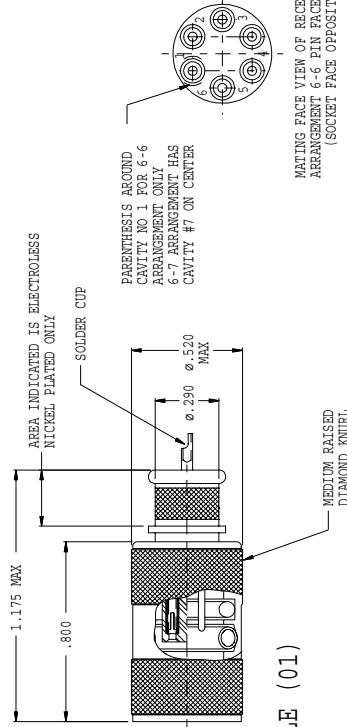
PART NUMBER DEVELOPMENT

EXAMPLE: 807-348 - 01 ZNU 6-6 S N

- CONNECTOR SERIES
- SHELL STYLE  
01 = IN-LINE RECEPTACLE
- CLASS
- SHELL SIZE/INSERT ARRANGEMENT NO.  
6-6 AND 6-7 AVAILABLE
- CONTACT STYLE  
S = SOCKET, SOLDER CUP  
D = SOCKET, PC TAIL  
P = PIN, SOLDER CUP  
C = PIN, PC TAIL
- KEY POSITION (SEE TABLE I)  
N = NORMAL  
X = POSITION X  
Y = POSITION Y  
Z = POSITION Z



NORMAL AND ALTERNATE POSITION  
KEY ROTATION  
FACE VIEW OF RECEPTACLE  
AS VIEWED FROM ENGAGING END



IN-LINE STYLE (01)

- CONTACT PIN IN POSITION 2 IS FIRST TO MAKE/LAST TO BREAK ELECTRICAL CONTACT.
- THE RESISTANCE FROM THE SHELL OF THE RECEPTACLE TO THE BARREL OF THE MATED PLUG SHALL BE MEASURED USING A FOUR TERMINAL MILLI OHM METER. THE MAXIMUM MEASURED RESISTANCE SHALL NOT BE GREATER THAN 2.5 MILLI OHMS UNDER NORMAL OPERATING CONDITIONS.
- THIS CONNECTOR IS ENVIRONMENTALLY SEALED TO MEET A HELIUM LEAK DETECTION LEVEL LESS THAN 10<sup>-6</sup> CC/SEC AT ONE ATMOSPHERE DELTA P.
- THIS PUSH/PULL RECEPTACLE REQUIRES 15 ±3 POUNDS TO FULLY DISENGAGE CONNECTOR.
- RED STRIPE INDICATOR FOR ALIGNMENT DURING MATING.
- GLENAIR SERIES 807-348 RECEPTACLE CONNECTOR IS DESIGNED TO MATE WITH GLENAIR SERIES 807-309 PLUG CONNECTOR.
- FOR ADDITIONAL INSERT ARRANGEMENTS CONSULT FACTORY.
- SOLDER CUP ACCOMMODATES 22, 24, 26 AND 28 GAGE WIRE
- THE CONTACTS ARE SIZE 23 SOLDER CUP AND ARE FIXED (POTTED) IN PLACE.
- MATERIAL / FINISH:  
SHELL AL ALLOY / EXTERNAL SURFACES: BLACK CHROMATE OVER ZINC NICKEL OVER ELECTROLESS NICKEL PLATE, INTERNAL SURFACES: ELECTROLESS NICKEL PLATE ONLY.  
INSULATORS - LCP/PA.  
O-RING - FLUOROSILICONE.  
CONTACT - COPPER ALLOY / GOLD PLATE PER ASTM B 488, TYPE II CLASS 1.25 ±.0005 MIN THK, OVER A SUITABLE UNDERPLATE.  
SPRINGS - BERYLLIUM COPPER/GOLD PLATED  
FILDER - RIV
- ASSEMBLY TO BE IDENTIFIED WITH GLENAIR'S NAME PART NUMBER AND DATE CODE SPACE PERMITTING.

NOTES: UNLESS OTHERWISE SPECIFIED

UNLESS OTHERWISE SPECIFIED DIMENSIONS ARE IN INCHES	DRAWN	R L	02/23/05	02/23/05	02/23/05	02/23/05	02/23/05
TOLERANCES:	CHECK	ENGR	GSB	GSB	GSB	GSB	GSB
FRACTIONS ±.1/16	<p><i>g. J. Brown</i></p> <p>APPROVED</p>						
DECIMALS .XX ±.030	<p><i>D. Brown</i></p> <p>APPROVED</p>						
ANGLES .XXX ±.015	<p>REVISION DATE</p> <p>RELEASE DATE</p>						
DO NOT SCALE THIS DRAWING	<p>SCALE N/A</p> <p>WEIGHT N/A</p> <p>SHEET 1 OF 1</p>						
B/F 6479	P/C 807						

THIS COPYRIGHTED DOCUMENT IS THE PROPERTY OF GLENAIR, INC. AND IS FURNISHED ON THE CONDITION THAT IT IS NOT TO BE DISCLOSED, REPRODUCED IN WHOLE OR IN PART, OR USED TO SOLICIT QUOTATIONS FROM COMPETITIVE SOURCES, OR USED FOR MANUFACTURE BY ANYONE OTHER THAN GLENAIR, INC. WITHOUT WRITTEN PERMISSION FROM GLENAIR, INC. THE INFORMATION HEREIN HAS BEEN DEVELOPED AT GLENAIR'S EXPENSE AND MAY BE USED FOR ENGINEERING EVALUATION AND INCORPORATION INTO TECHNICAL SPECIFICATIONS AND OTHER DOCUMENTS WHICH SPECIFY PROCUREMENT OF PRODUCTS FROM GLENAIR, INC.

**GLENAIR, INC.**  
1211 AIR WAY - GLENDALE - CALIFORNIA 91201

CONNECTOR RECEPTACLE, PUSH/PULL TYPE.  
#23 CONTACTS, SOLDER CUP.  
SHELL SIZE 6, 15 LB PULL OUT  
BANDING

FORM IDENT. NO. 06324  
REV. C  
807-348

FORM 1997