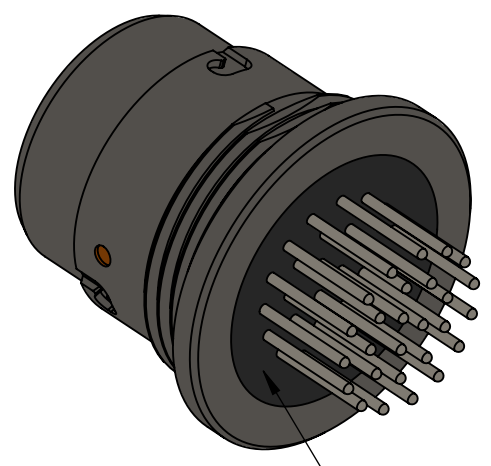
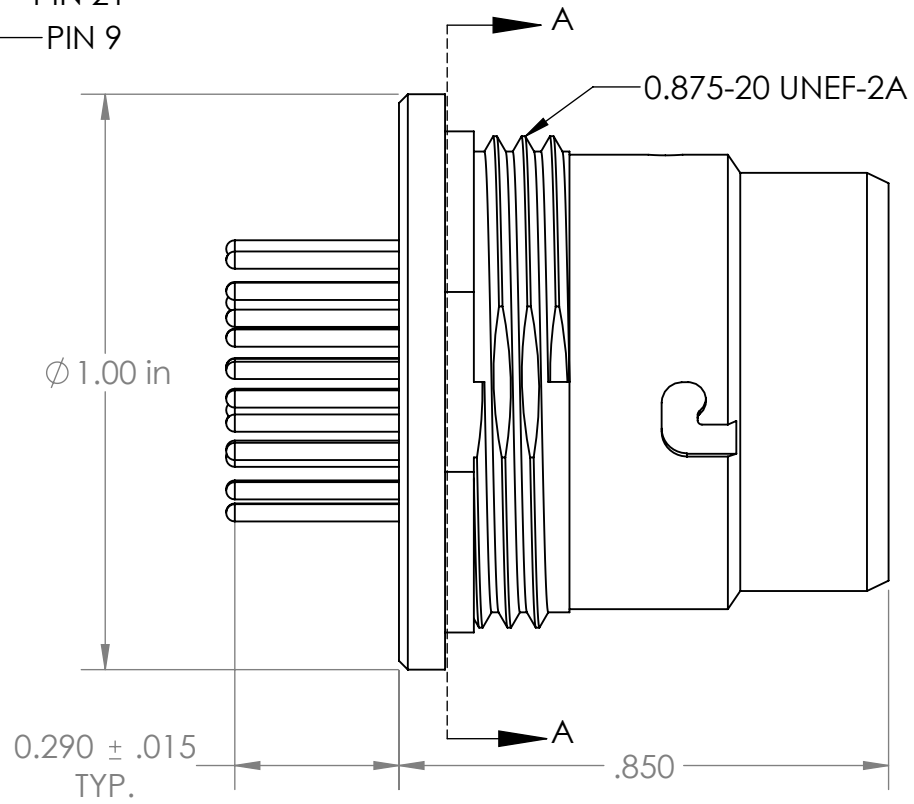
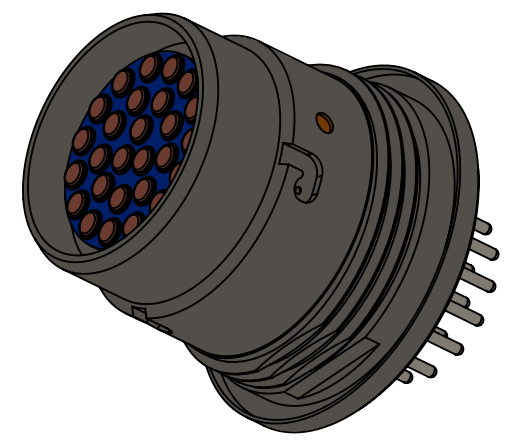
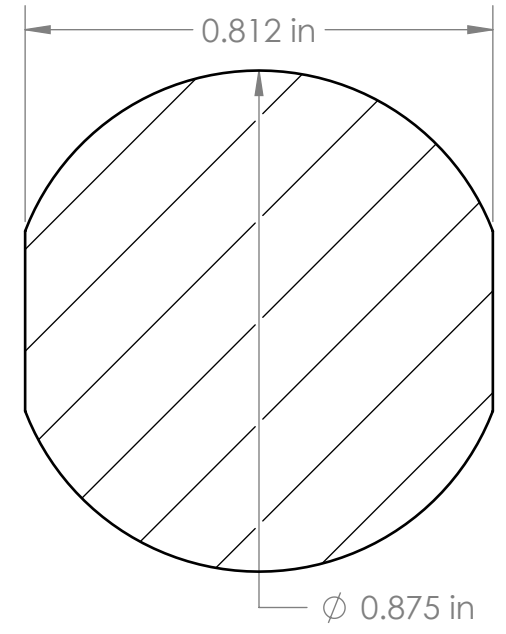
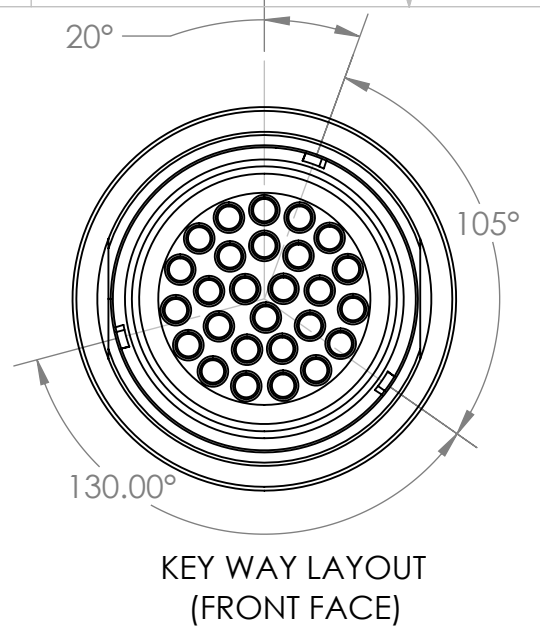
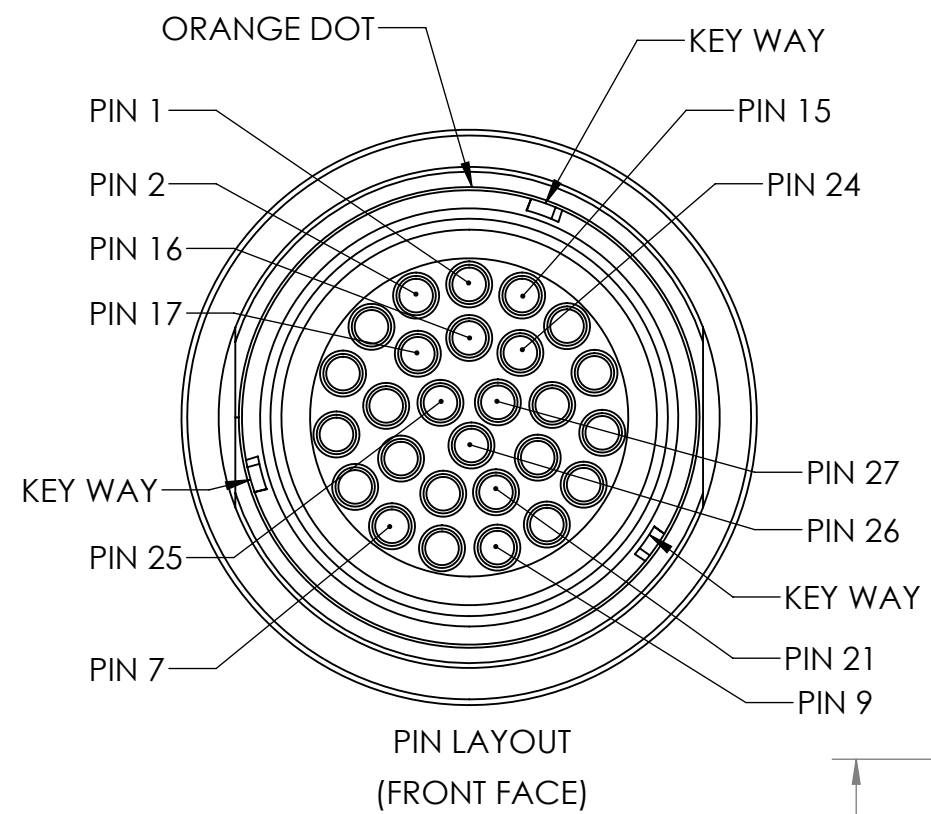


8 7 6 5 4 3 2 1

REVISIONS			
REV.	DESCRIPTION	DATE	ENG
B	CORRECTED KEYWAY LOCATIONS	1/22/21	TC



REQUIREMENTS	
TEMPERATURE RANGE	-55 TO +85 DEG. C
CAPACITANCE 0.1VRMS 1KHZ+/- .1	1700pF ± 20%
WORKING VOLTS D.C.	50
D, W, V, VDC MIN	150
R.F. CURRENT MAX.	0.25 AMPS
I.R. MIN, @ 150VDC	1,000 MEGOHMS
INSERTION LOSS PER. MIL-STD-220, NO LOAD	MIN.
10Mhz	8 Db
30Mhz	20 Db
100-200Mhz	30 Db
200-300Mhz	40 Db
300-500Mhz	50 Db

UNLESS OTHERWISE SPECIFIED:  
 DIMENSIONS ARE IN: INCHES  
 TOLERANCES: .XX: ± 0.03  
 .XXX: ± 0.005  
 ANGULAR: .X°: 1°  
 .XX°: 0.5°  
 BREAK EDGES: .005 - .020  
 FILLETS: .005 - .020  
 SURFACE FINISH:  
 GEOMETRIC TOLERANCING  
 PER: ASME Y14.5 -2009  
 MATERIAL: SEE DRAWING NOTES  
 FINISH: SEE DRAWING NOTES  
 DO NOT SCALE DRAWING

	NAME	DATE
DRAWN	MOB	9/12/19
CHECKED	RB	9/12/19
COMMENTS:		
<b>PROPRIETARY AND CONFIDENTIAL</b>		
THE INFORMATION CONTAINED IN THIS DRAWING IS THE SOLE PROPERTY OF SUPPLYNET, INC. ANY REPRODUCTION IN PART OR AS A WHOLE WITHOUT THE WRITTEN PERMISSION OF SUPPLYNET INC. IS PROHIBITED.		
<b>CAGE CODE: 1HJX9</b>		

REF. NUMBER: SN0779		
<b>SupplyNet</b> 706 EXECUTIVE BLVD. SUITE B VALLEY COTTAGE, NY 10989		
TITLE: <b>MC2127-M</b>		
SIZE <b>B</b>	DWG. NO. CONN-MC2127-M	REV B
SCALE: NA	WEIGHT:	SHEET 1 OF 1

8 7 6 5 4 3 2 1