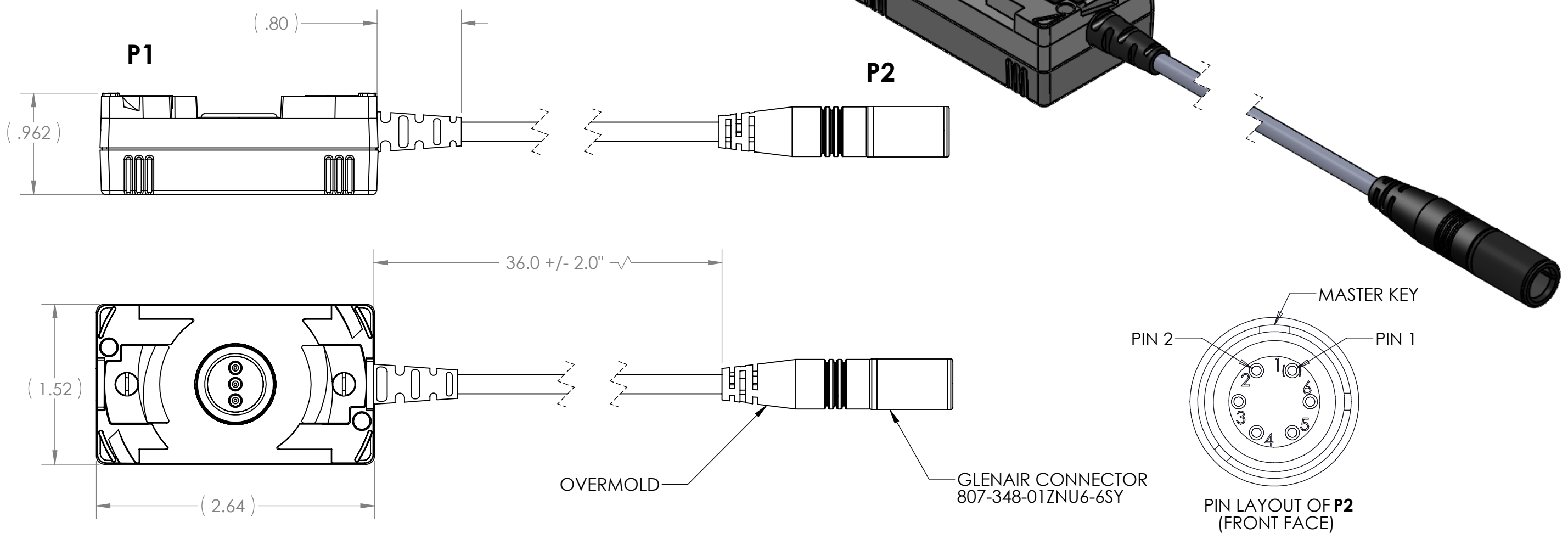


REV	DATE	DESCRIPTION OF CHANGE	ENG
A	06/08/17	INITIAL RELEASE	TC



NOTES:
 1) PCB TO BE SOLDERED IAW IPC-J-STD-001 AS APPLICABLE.
 2) PCB INSTALLATION AND WIRING INSTRUCTIONS (TABLE 1) ON SHEET 3.
 3) REFERENCE SUPPLYNET FILE NUMBER SN0087.
 4) PCB AND FASTENNG NUTS ARE INSTALLED OVER THESE SCREWS.

UNLESS OTHERWISE SPECIFIED:
 DIMENSIONS ARE IN: INCHES
 TOLERANCES: .XX: ± 0.03
 .XXX: ± 0.005
 ANGULAR: .X°: 1°
 .XX°: 0.5°
 BREAK EDGES: .005 - .020
 FILLETS: .005 - .020
 SUFACE FINISH:
 GEOMETRIC TOLERANCING
 PER: ASME Y14.5 -2009
 MATERIAL: SEE DRAWING NOTES
 FINISH: SEE DRAWING NOTES
 DO NOT SCALE DRAWING

	NAME	DATE
DRAWN	TC	06/08/17
CHECKED	RJB	06/08/17
COMMENTS:		

PART NUMBER: SN-198

SupplyNet 706 EXECUTIVE BLVD.
 SUITE B
 VALLEY COTTAGE, NY 10989

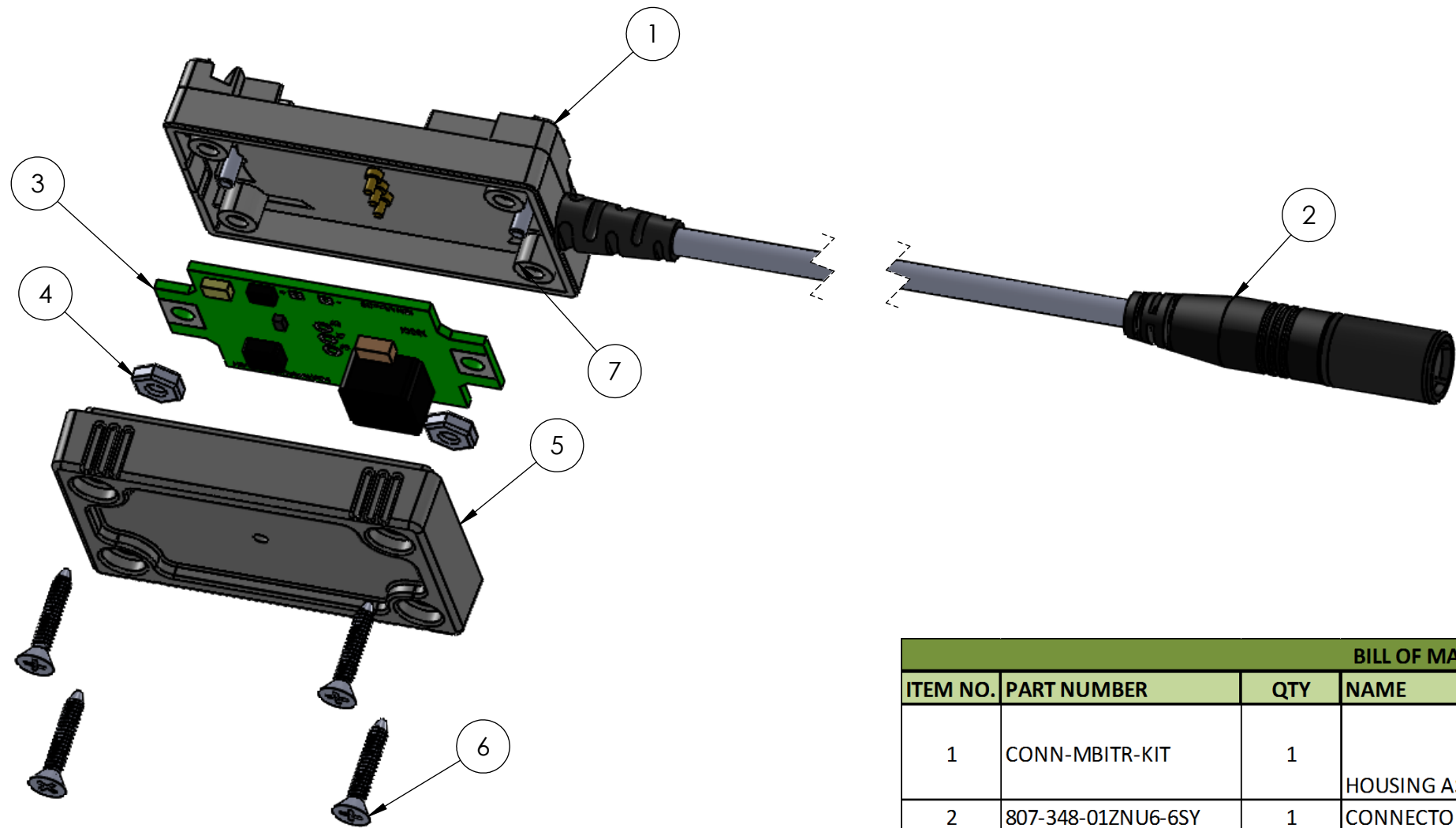
TITLE:
**PRC 152 TO GLENAIR
 FEMALE CONNECTOR**

SIZE B	DWG. NO. SN-198-F	REV A
------------------	-----------------------------	-----------------

SCALE: NA WEIGHT: SHEET 1 OF 3

PROPRIETARY AND CONFIDENTIAL
 THE INFORMATION CONTAINED IN THIS
 DRAWING IS THE SOLE PROPERTY OF
 SUPPLYNET, INC. ANY REPRODUCTION
 IN PART OR AS A WHOLE WITHOUT THE
 WRITTEN PERMISSION OF SUPPLYNET INC.
 IS PROHIBITED.

CAGE CODE: 1HJX9



BILL OF MATERIALS				
ITEM NO.	PART NUMBER	QTY	NAME	COMMENTS
1	CONN-MBITR-KIT	1	HOUSING ASSEMBLY	USES LONGER FASTENERS (ITEM 7), DEEPER COVER (ITEM5) AND LONGER SCREWS (ITEM 6).
2	807-348-01ZNU6-6SY	1	CONNECTOR	GLENAIR CONNECTOR FEMALE
3	SN-12VPCB-2	1	PCB ASSEMBLY	10-18V INPUT / 12V REGULATED OUTPUT
4		2	NUT	4-40 UNC
5	SN-MBITR-DEEP	1	COVER	
6	SN-MBITR-DEEP	4	SCREW	
7		2	FASTENERS	4-40 UNC

PART NUMBER: SN-198

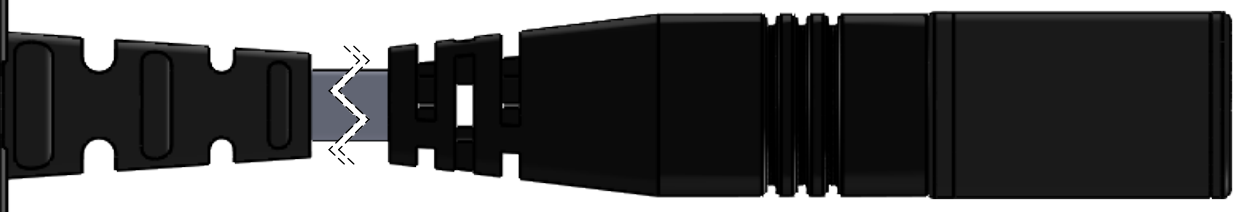
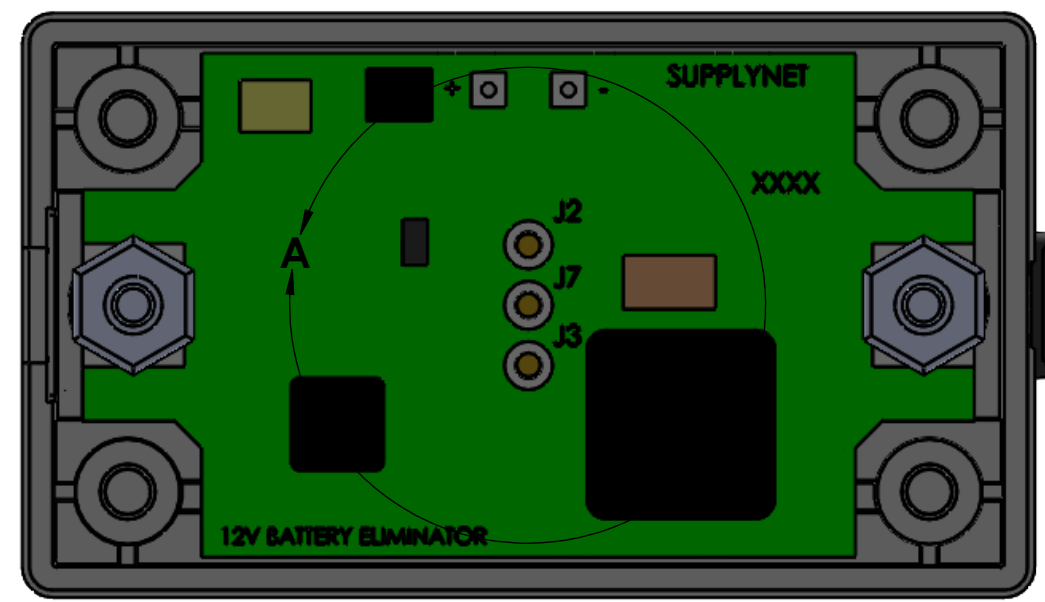
SupplyNet 706 EXECUTIVE BLVD.
SUITE B
VALLEY COTTAGE, NY 10989

TITLE:
PRC 152 TO GLENAIR
FEMALE CONNECTOR

PROPRIETARY AND CONFIDENTIAL
THE INFORMATION CONTAINED IN THIS DRAWING IS THE SOLE PROPERTY OF SUPPLYNET, INC. ANY REPRODUCTION IN PART OR AS A WHOLE WITHOUT THE WRITTEN PERMISSION OF SUPPLYNET INC. IS PROHIBITED.

SIZE B	DWG. NO. SN-198-F	REV A
------------------	-----------------------------	-----------------

CAGE CODE: 1HJX9 SCALE: NA WEIGHT: SHEET 2 OF 3



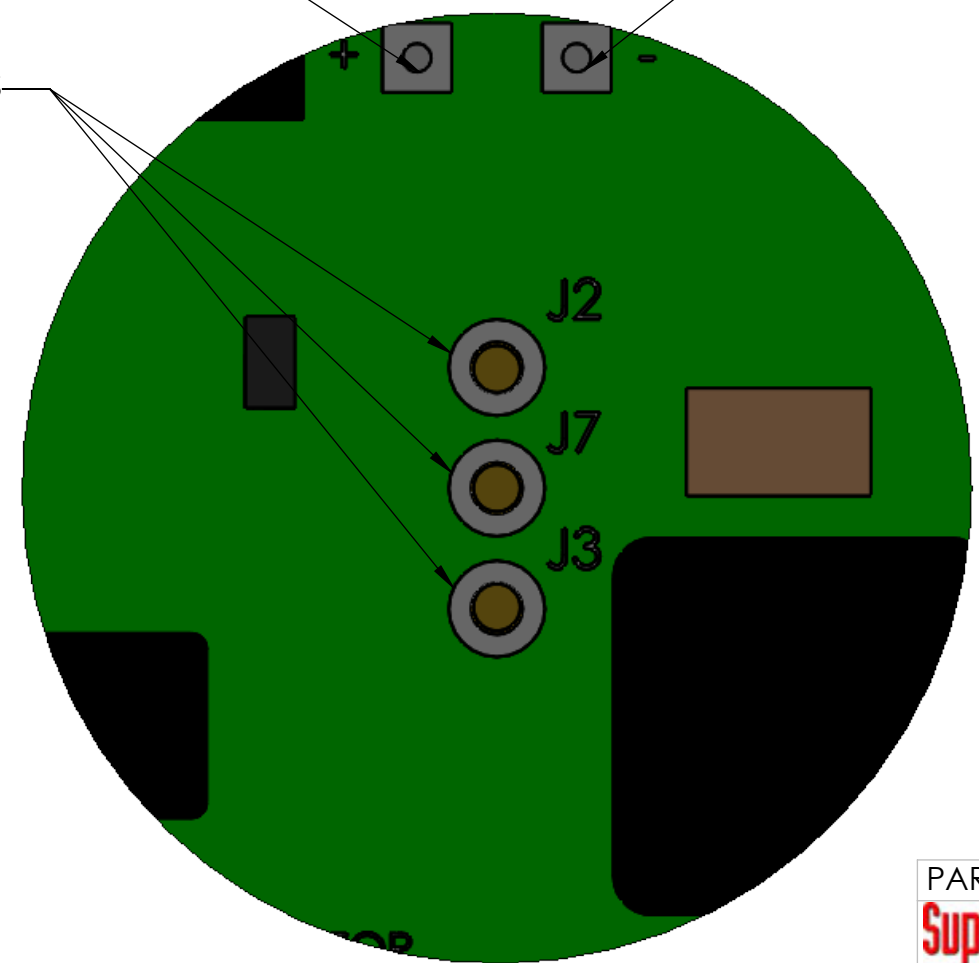
P2

P1

SOLDERED RED WIRE.

SOLDERED GREEN WIRE.

SOLDER LOCATIONS



PCB INSTALLATION AND WIRING INSTRUCTIONS:

- 1) LOCATE AND INSTALL PCB AS SHOWN.
- 2) SECURE PCB TO HOUSING USING 4-40 UNC FASTENING NUTS.
- 3) WIRE PER TABLE 1. SOLDERING IAW IPC-J-STD-001.
- 4) APPLY CONFORMAL COATING TO PCB USING CONFORMAL COATING PER CRC TDS PLASTIK 70. USE EITHER SPRAY OR BRUSH METHOD. MASK OFF ALL EXTERIOR AREAS OF THE PRC 152 HOUSING. CONFORMAL COATING ON EXTERIOR IS PROHIBITED. APPLY AND CURE CONFORMAL COATING AS DESCRIBED IN PLASTIK 70 TDS.
- 5) ATTACH COVER USING THE MOUNTING SCREWS AND INDUSTRIAL ADHESIVE RX GEL (REF SN0042). CURE PER INSTRUCTIONS.

TABLE 1.		
PCB LOCATION (P1)	WIRE COLOR	GLENAIR CONNECTOR (P2)
+	RED	1
-	GREEN	2

**DETAIL A
SCALE 4 : 1**

PART NUMBER: SN-198

SupplyNet 706 EXECUTIVE BLVD.
SUITE B
VALLEY COTTAGE, NY 10989

TITLE:
PRC 152 TO FEMALE GLENAIR
CONNECTOR

SIZE B	DWG. NO. SN-198-F	REV A
------------------	-----------------------------	-----------------

CAGE CODE: 1HJX9 SCALE: NA WEIGHT: SHEET 3 OF 3

PROPRIETARY AND CONFIDENTIAL
THE INFORMATION CONTAINED IN THIS
DRAWING IS THE SOLE PROPERTY OF
SUPPLYNET, INC. ANY REPRODUCTION
IN PART OR AS A WHOLE WITHOUT THE
WRITTEN PERMISSION OF SUPPLYNET INC.
IS PROHIBITED.