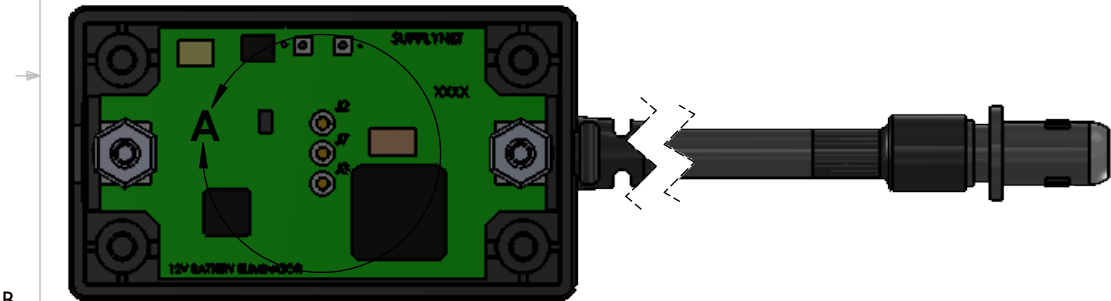


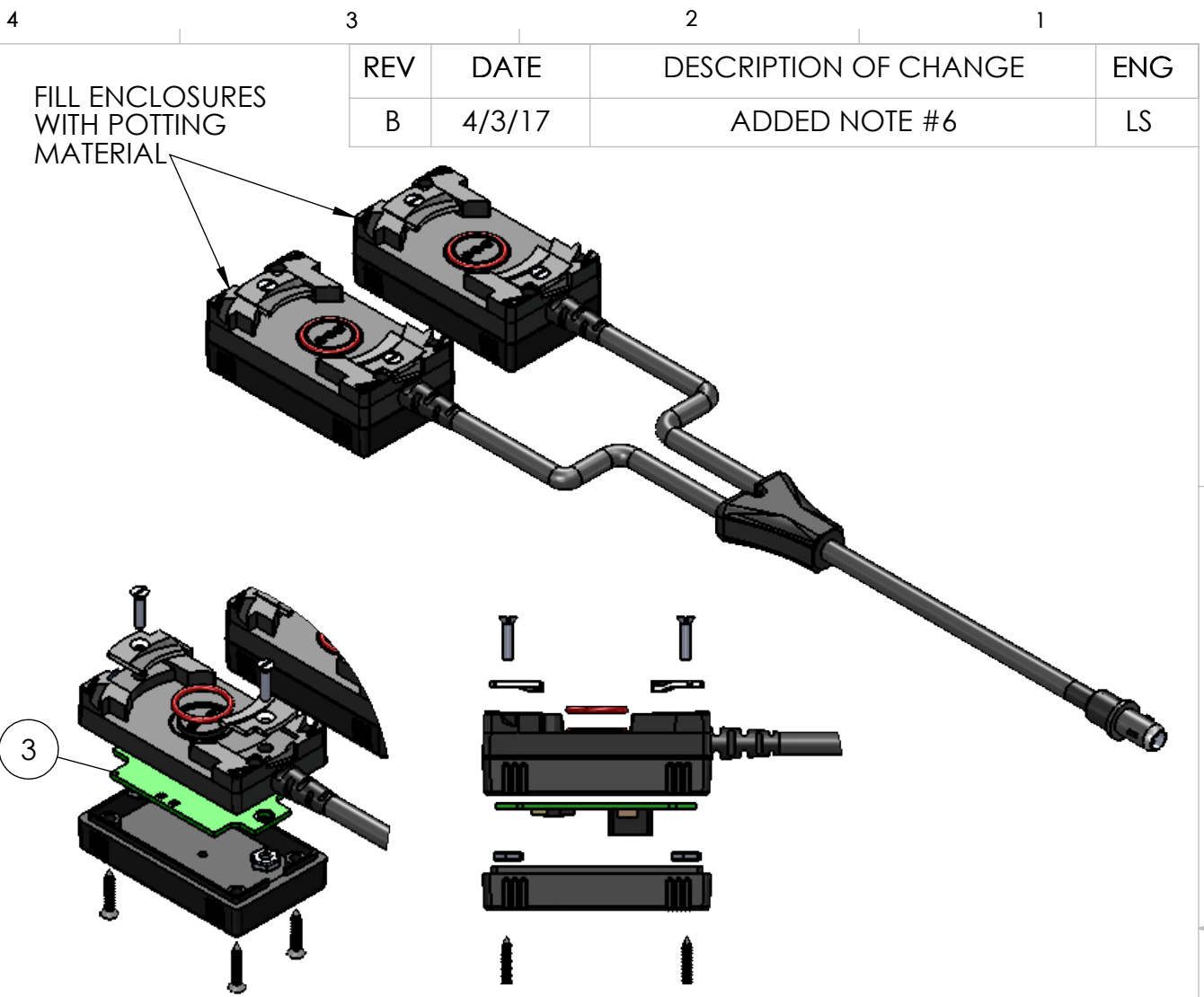
TABLE 1.		
PCB LOCATION (P1)	WIRE COLOR	GLENAIR CONNECTOR (P2)
+	RED	1
-	GREEN	2



PCB INSTALLATION AND WIRING INSTRUCTIONS:

- 1) LOCATE AND INSTALL PCB AS SHOWN.
- 2) SECURE PCB TO HOUSING USING 4-40 UNC FASTENING NUTS.
- 3) WIRE PER TABLE 1. SOLDERING IAW IPC-J-STD-001.
- 4) APPLY CONFORMAL COATING TO PCB USING CONFORMAL COATING PER CRC TDS PLASTIK 70. USE EITHER SPRAY OR BRUSH METHOD. MASK OFF ALL EXTERIOR AREAS OF THE PRC 152 HOUSING. CONFORMAL COATING ON EXTERIOR IS PROHIBITED. APPLY AND CURE CONFORMAL COATING AS DESCRIBED IN PLASTIK 70 TDS.
- 5) ATTACH COVER USING THE MOUNTING SCREWS AND INDUSTRIAL ADHESIVE RX GEL (REF SN0042). CURE PER INSTRUCTIONS.
- 6) FILL ENCLOSURE WITH POTTING MATERIAL

- NOTES:
- 1) PCB TO BE SOLDERED IAW IPC-J-STD-001 AS APPLICABLE.
 - 2) PCB INSTALLATION AND WIRING INSTRUCTIONS TABLE 1



BILL OF MATERIALS				
ITEM NO.	PART NUMBER	QTY	NAME	COMMENTS
1	CONN-MBITR	2	HOUSING ASSEMBLY	USES LONGER FASTENERS FOR DEEPER COVER AND LONGER SCREWS).
2	807-309-06ZNU6-6PY	2	CONNECTOR	GLENAIR CONNECTOR
3	SN-12VPCB-2	2	PCB ASSEMBLY	10-18V INPUT / 12V REGULATED OUTPUT
4	AWG 22 2C	50"	2 CONDUCTOR WIRE	
5	SN-MBITR-DEEP	2	COVER	

UNLESS OTHERWISE SPECIFIED:
DIMENSIONS ARE IN: INCHES
TOLERANCES: .XX: ± 0.03
.XXX: ± 0.005
ANGULAR: .X°: 1°
.XX°: 0.5°
BREAK EDGES: .005 - .020
FILLETS: .005 - .020
SURFACE FINISH:

GEOMETRIC TOLERANCING
PER: ASME Y14.5 -2009

MATERIAL: SEE DRAWING NOTES
FINISH: SEE DRAWING NOTES

DO NOT SCALE DRAWING

DRAWN	TC	04/19/16
CHECKED	RJB	04/19/16
COMMENTS:		

PROPRIETARY AND CONFIDENTIAL
THE INFORMATION CONTAINED IN THIS DRAWING IS THE SOLE PROPERTY OF SUPPLYNET, INC. ANY REPRODUCTION IN PART OR AS A WHOLE WITHOUT THE WRITTEN PERMISSION OF SUPPLYNET INC. IS PROHIBITED.

CAGE CODE: 1HJX9

REF. NUMBER: SN0412

SupplyNet 706 EXECUTIVE BLVD.
SUITE B
VALLEY COTTAGE, NY 10989

TITLE:
DUAL PRC 152 TO GLENAIR CONNECTOR

SIZE B	DWG. NO. SN-198-X2	REV B
SCALE: NA	WEIGHT:	SHEET 1 OF 1