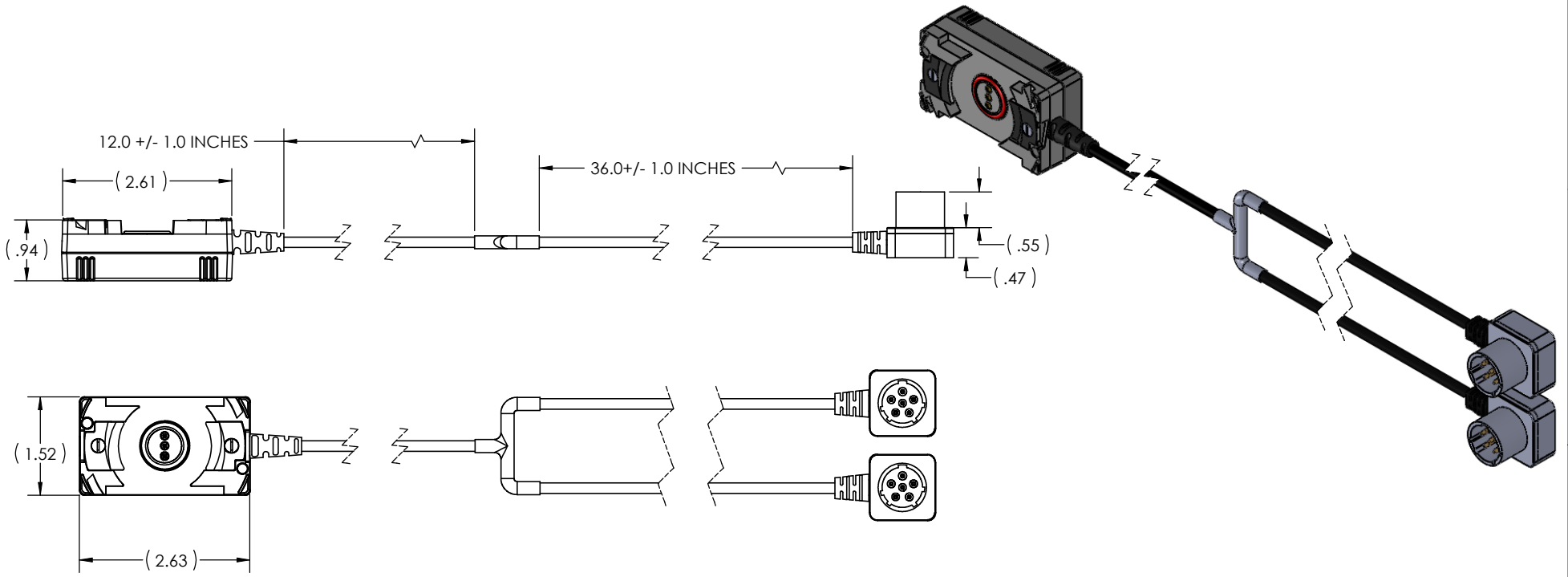


REV	DATE	DESCRIPTION OF CHANGE	ENG
B	02/20/14	REVISED. SEE DCN SN0084G	RJB



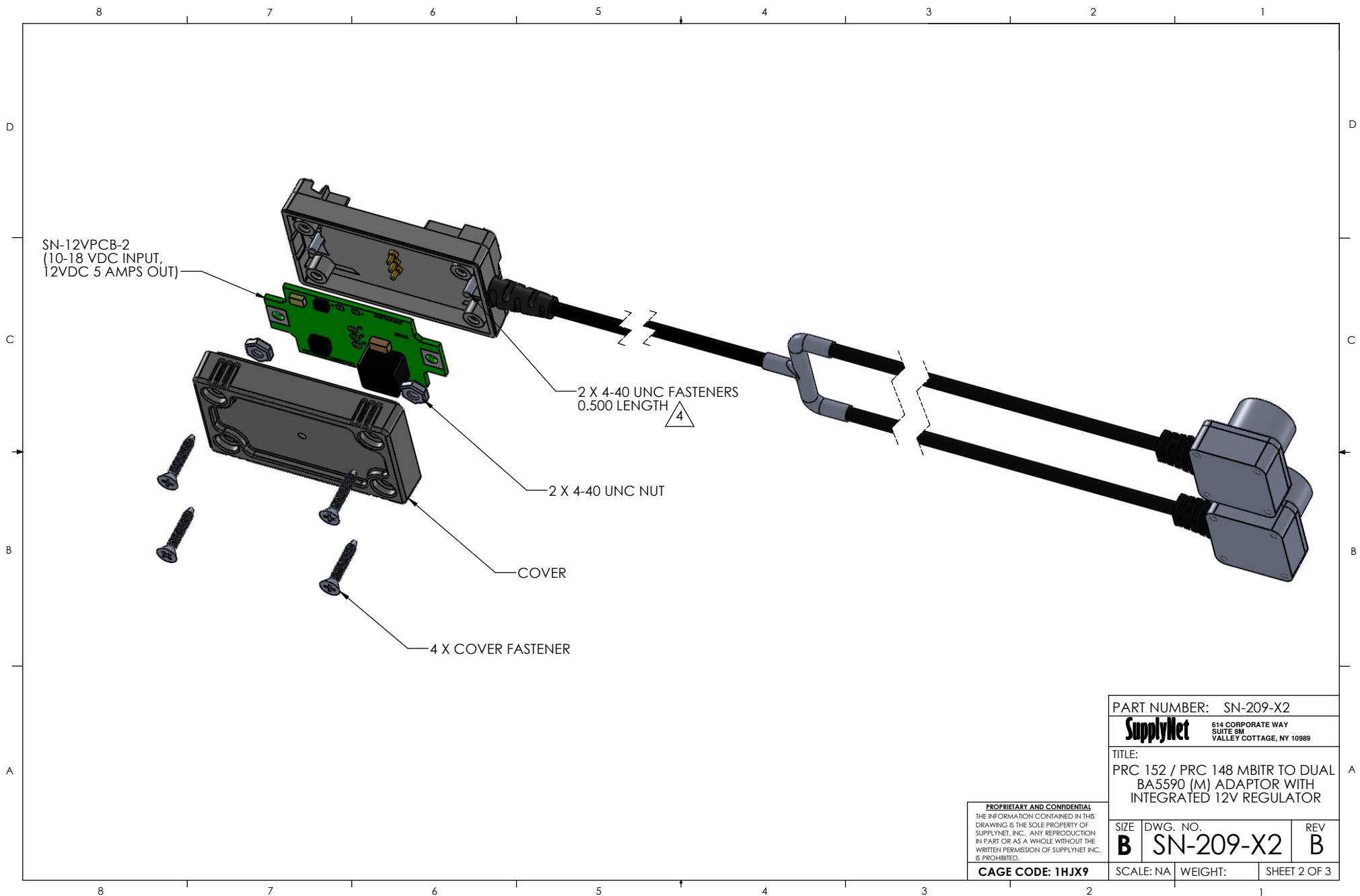
- NOTES:
- 1) PCB TO BE SOLDERED IAW IPC-J-STD-001 AS APPLICABLE.
 - 2) PCB INSTALLATION AND WIRING INSTRUCTIONS ON SHEET 3.
 - 3) REFERENCE SUPPLYNET FILE NUMBER SN0084.
- △ PCB AND FASTENING NUTS ARE INSTALLED OVER THESE SCREWS.

UNLESS OTHERWISE SPECIFIED:
 DIMENSIONS ARE IN: INCHES
 TOLERANCES: .XX: ± 0.03
 .XXX: ± 0.005
 ANGULAR: ° XX: ± 1°
 ° XX: ± 0.5°
 BREAK EDGES: .005 - .020
 FILLETS: .005 - .020
 SURFACE FINISH:
 GEOMETRIC TOLERANCING
 PER: ASME Y14.5-2009
 MATERIAL: SEE DRAWING NOTES
 FINISH: SEE DRAWING NOTES

	NAME	DATE
DRAWN	RJB	04/11/13
CHECKED	RJB	04/11/13
COMMENTS:		

PROPRIETARY AND CONFIDENTIAL
 THE INFORMATION CONTAINED IN THIS DRAWING IS THE SOLE PROPERTY OF SUPPLYNET, INC. ANY REPRODUCTION IN PART OR AS A WHOLE WITHOUT THE WRITTEN PERMISSION OF SUPPLYNET INC. IS PROHIBITED.

PART NUMBER: SN-209-X2		
SupplyNet 614 CORPORATE WAY SUITE 8H VALLEY COTTAGE, NY 10989		
TITLE: PRC 152 / PRC 148 MBITR TO DUAL BA5590 (M) ADAPTOR WITH INTEGRATED 12V REGULATOR		
SIZE B	DWG. NO. SN-209-X2	REV B
DO NOT SCALE DRAWING	CAGE CODE: 1HJX9	SCALE: NA WEIGHT: SHEET 1 OF 3



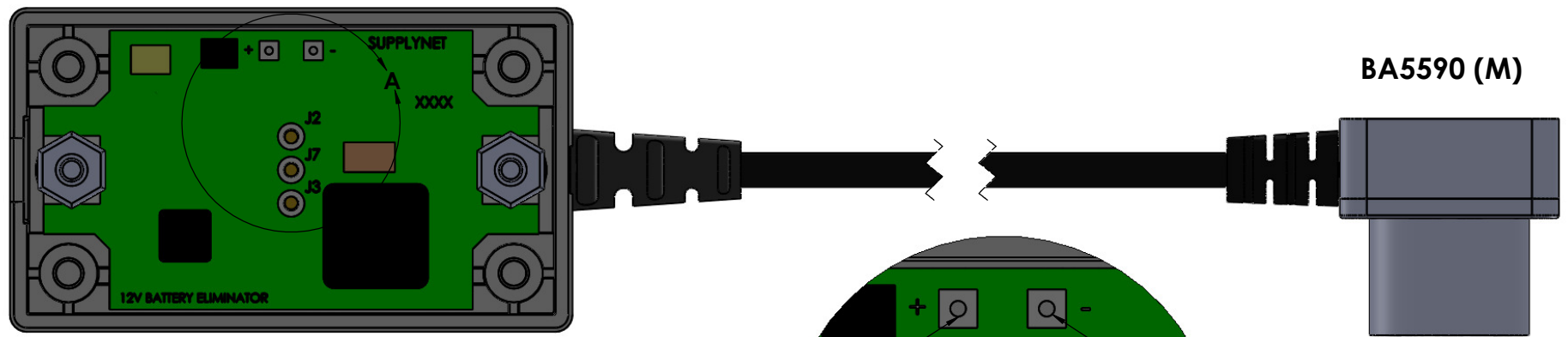
PART NUMBER: SN-209-X2		
SupplyNet 614 CORPORATE WAY SUITE 8M VALLEY COTTAGE, NY 10989		
TITLE: PRC 152 / PRC 148 MBITR TO DUAL BA5590 (M) ADAPTOR WITH INTEGRATED 12V REGULATOR		
SIZE B	DWG. NO. SN-209-X2	REV B
CAGE CODE: 1HJX9	SCALE: NA	WEIGHT: SHEET 2 OF 3

PROPRIETARY AND CONFIDENTIAL
THE INFORMATION CONTAINED IN THIS
DRAWING IS THE SOLE PROPERTY OF
SUPPLYNET, INC. ANY REPRODUCTION
IN PART OR AS A WHOLE WITHOUT THE
WRITTEN PERMISSION OF SUPPLYNET INC.
IS PROHIBITED.

8 7 6 5 4 3 2 1

D

D



PRC 152

BA5590 (M)

PCB INSTALLATION AND WIRING INSTRUCTIONS:

- 1) LOCATE AND INSTALL PCB AS SHOWN.
- 2) SECURE PCB TO HOUSING USING 4-40 UNC FASTENING NUTS.
- 3) WIRE PER TABLE 1. SOLDERING IAW IPC-J-STD-001 FOR EACH BA5590 (M).
- 4) APPLY CONFORMAL COATING TO PCB USING CONFORMAL COATING PER CRC TDS PLASTIK 70. USE EITHER SPRAY OR BRUSH METHOD. MASK OFF ALL EXTERIOR AREAS OF THE PRC 152 HOUSING. CONFORMAL COATING ON EXTERIOR IS PROHIBITED. APPLY AND CURE CONFORMAL COATING AS DESCRIBED IN PLASTIK 70 TDS.
- 5) ATTACH COVER USING THE MOUNTING SCREWS AND INDUSTRIAL ADHESIVE RX GEL (REF SN0042). CURE PER INSTRUCTIONS.

SOLDERED. RED WIRE

SOLDERED. GREEN WIRE

SOLDER LOCATIONS

**DETAIL A
SCALE 4 : 1**

TABLE 1.		
PRC 152	WIRE COLOR	BA5590 (M) X 2
-	GREEN	1,2
+	RED	4,5

PART NUMBER: SN-209-X2		
<small>614 CORPORATE WAY SUITE 8M VALLEY COTTAGE, NY 10989</small>		
TITLE:		
PRC 152 / PRC 148 MBITR TO DUAL BA5590 (M) ADAPTOR WITH INTEGRATED 12V REGULATOR		
SIZE	DWG. NO.	REV
B	SN-209-X2	B
CAGE CODE: 1HJX9		SHEET 3 OF 3
SCALE: NA	WEIGHT:	

PROPRIETARY AND CONFIDENTIAL
THE INFORMATION CONTAINED IN THIS
DRAWING IS THE SOLE PROPERTY OF
SUPPLYNET, INC. ANY REPRODUCTION
IN PART OR AS A WHOLE WITHOUT THE
WRITTEN PERMISSION OF SUPPLYNET INC.
IS PROHIBITED.

8 7 6 5 4 3 2 1

A

A