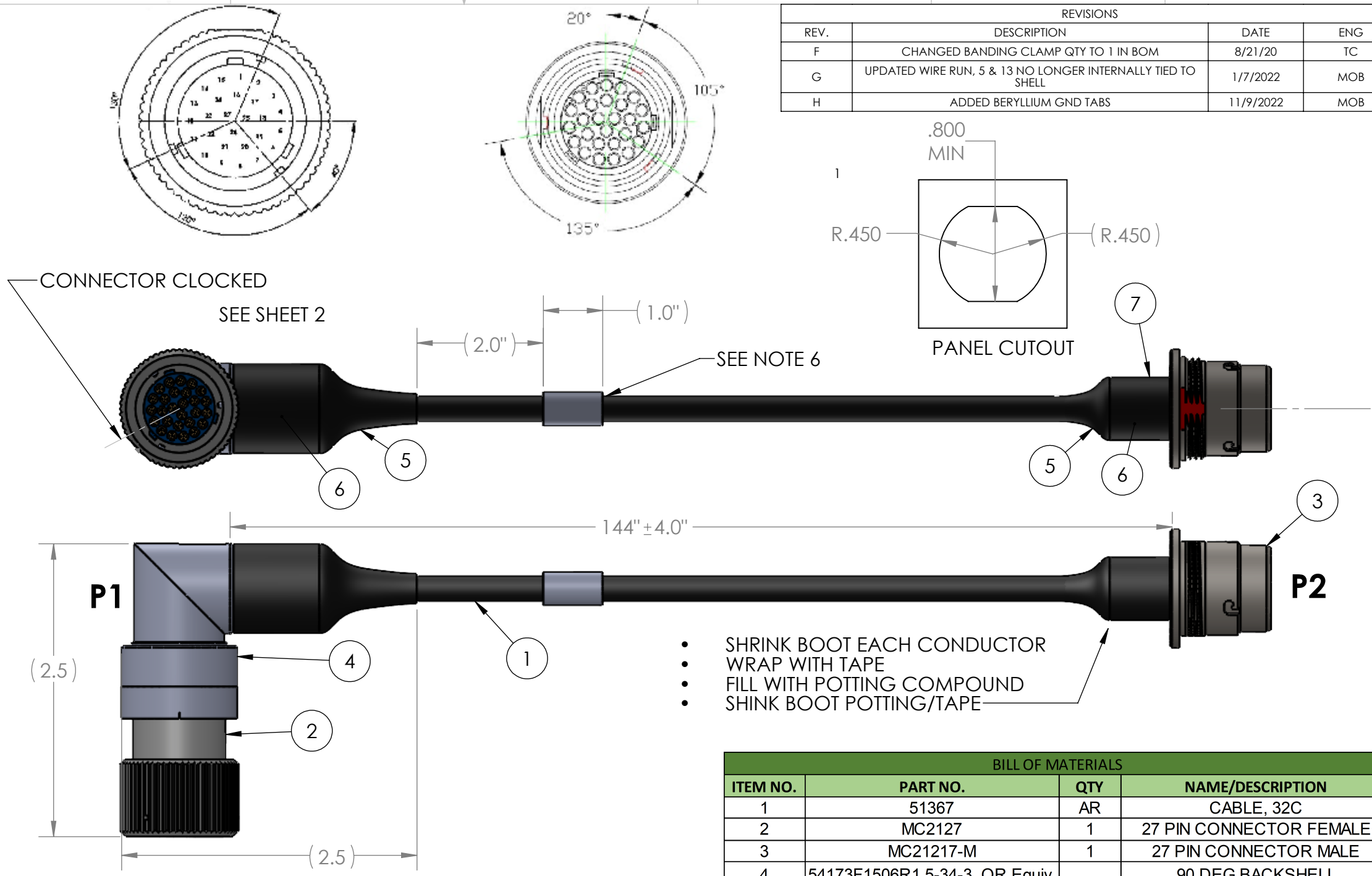


TABLE 1. WIRE RUN LIST		
P1 PINS	WIRE COLORS	P2 PINS
1	BLACK	1
2	BROWN	2
3	RED	3
4	DARK ORANGE/BLACK	4
5	YELLOW	5
6	LIGHT GREEN/WHITE	6
7	BLUE	7
8	VIOLET	8
9	GRAY	9
10	DARK BLUE/BLACK	10
11	TAN	11
12	LIGHT BLUE/WHITE	12
13	PINK	13
14	WHITE/BLACK	14
15	BLACK/WHITE	15
16	BROWN/WHITE	16
17	RED/WHITE	17
18	RED/BLACK	18
19	YELLOW/WHITE	19
20	YELLOW/BLACK	20
21	VIOLET/WHITE	21
22	GRAY/WHITE	22
23	TAN/WHITE	23
24	TAN/BLACK	24
25	PINK/WHITE	25
26	PINK/BLACK	26
27	GREEN	27
SHELL	SHIELD/DRAIN WIRE	5, 13, SHELL

NOTE: JUMP PINS 5 & 13 AND CONNECT TO SHIELD/DRAIN WIRE.

- NOTES:
- CABLE: 26 AWG, 32 CONDUCTOR, OD: 0.350 NOMINAL. POLYURETHANE INSULATION.
 - OVERMOLD MATERIAL: 90A POLYETHER-TYPE THERMOPLASTIC POLYURETHANE (TPU).
 - JACKET: BLACK MATTE FINISH.
 - SOLDERING IAW IPC-J-STD-001 CLASS II AS APPLICABLE.
 - CABLE ASSEMBLIES TO BE 100% TESTED FOR CONTINUITY, SHORTS AND INSULATION RESISTANCE (250V @20MOHM MINIMUM)
 - IDENTIFICATION: LABEL INFO:
PN: SN-1178-X REV X (REV MARKING PER PO)
CAGE CODE: 1HJX9
DATE OF MFG: MM/YY
 - WIRING FUNCTION AND PIN LOCATION: SEE TABLE 1.
 - REFERENCE SUPPLYNET FILE NUMBER SN0721.
 - MANUFACTURE AND INSPECT IAW IPC/WHMA A-620 CLASS 2.
 - COVER SOLDERED CONNECTIONS WITH SHRINK TUBING.
 - CAP AND STOW ALL UNUSED WIRES.



- SHRINK BOOT EACH CONDUCTOR
- WRAP WITH TAPE
- FILL WITH POTTING COMPOUND
- SHINK BOOT POTTING/TAPE

REVISIONS			
REV.	DESCRIPTION	DATE	ENG
F	CHANGED BANDING CLAMP QTY TO 1 IN BOM	8/21/20	TC
G	UPDATED WIRE RUN, 5 & 13 NO LONGER INTERNALLY TIED TO SHELL	1/7/2022	MOB
H	ADDED BERYLLIUM GND TABS	11/9/2022	MOB

BILL OF MATERIALS			
ITEM NO.	PART NO.	QTY	NAME/DESCRIPTION
1	51367	AR	CABLE, 32C
2	MC2127	1	27 PIN CONNECTOR FEMALE
3	MC2127-M	1	27 PIN CONNECTOR MALE
4	54173F1506R1.5-34-3. OR Equiv.		90 DEG BACKSHELL
5	TBD	1	SHRINK TUBE
6	BE-04	1	BANDING CLAMP
7	85-463	2	BERYLLIUM GND TABS

UNLESS OTHERWISE SPECIFIED:
 DIMENSIONS ARE IN: INCHES
 TOLERANCES: .XX: ± 0.03
 .XXX: ± 0.005
 ANGULAR: .X°: 1°
 .XX°: 0.5°
 BREAK EDGES: .005 - .020
 FILLETS: .005 - .020
 SURFACE FINISH:
 GEOMETRIC TOLERANCING PER: ASME Y14.5-2009
 MATERIAL: SEE DRAWING NOTES
 FINISH: SEE DRAWING NOTES
 DO NOT SCALE DRAWING

NAME	DATE
DRAWN TC	04/10/20
CHECKED RJB	04/10/20
COMMENTS:	
PROPRIETARY AND CONFIDENTIAL THE INFORMATION CONTAINED IN THIS DRAWING IS THE SOLE PROPERTY OF SUPPLYNET, INC. ANY REPRODUCTION IN PART OR AS A WHOLE WITHOUT THE WRITTEN PERMISSION OF SUPPLYNET INC. IS PROHIBITED.	
CAGE CODE: 1HJX9	

REF. NUMBER: SN0721

SupplyNet 706 EXECUTIVE BLVD. SUITE B VALLEY COTTAGE NY 10989

TITLE: **AN/PRC-150 J3 Extension Cable, 12 feet**

SIZE B	DWG. NO. SN-1178	REV H
SCALE: NA	WEIGHT:	SHEET 1 OF 2

8 7 6 5 4 3 2 1

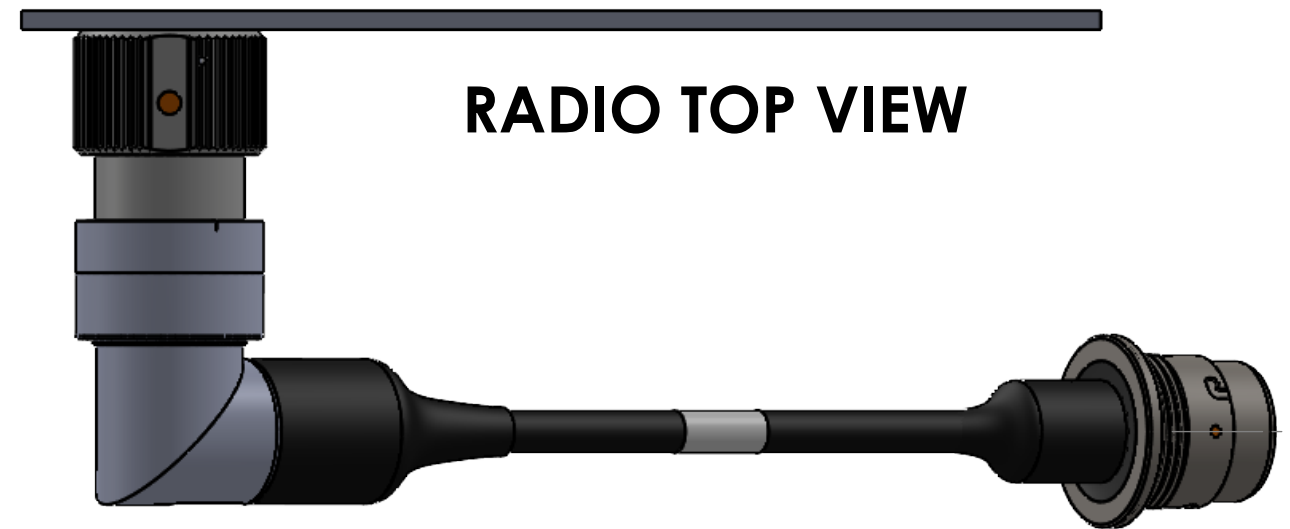
D
C
B
A

D
C
B
A

ORANGE DOT



RADIO FRONT VIEW



RADIO TOP VIEW

UNLESS OTHERWISE SPECIFIED:
 DIMENSIONS ARE IN: INCHES
 TOLERANCES: .XX: ± 0.03
 .XXX: ± 0.005
 ANGULAR: .X°: 1°
 .XX°: 0.5°
 BREAK EDGES: .005 - .020
 FILLETS: .005 - .020
 SURFACE FINISH:
 GEOMETRIC TOLERANCING
 PER: ASME Y14.5 -2009
 MATERIAL: SEE DRAWING NOTES
 FINISH: SEE DRAWING NOTES
 DO NOT SCALE DRAWING

	NAME	DATE
DRAWN	TC	10/10/2013
CHECKED	RB	10/10/2013
COMMENTS:		
PROPRIETARY AND CONFIDENTIAL		
THE INFORMATION CONTAINED IN THIS DRAWING IS THE SOLE PROPERTY OF SUPPLYNET, INC. ANY REPRODUCTION IN PART OR AS A WHOLE WITHOUT THE WRITTEN PERMISSION OF SUPPLYNET INC. IS PROHIBITED.		
CAGE CODE: 1HJX9		

REF. NUMBER: SN0721	
SupplyNet 706 EXECUTIVE BLVD. SUITE B VALLEY COTTAGE, NY 10989	
TITLE: AN/PRC-150 J3 Extension Cable, 12 feet	
SIZE B	DWG. NO. SN-1178
SCALE: NA	WEIGHT:
REV H	SHEET 2 OF 2

8 7 6 5 4 3 2 1