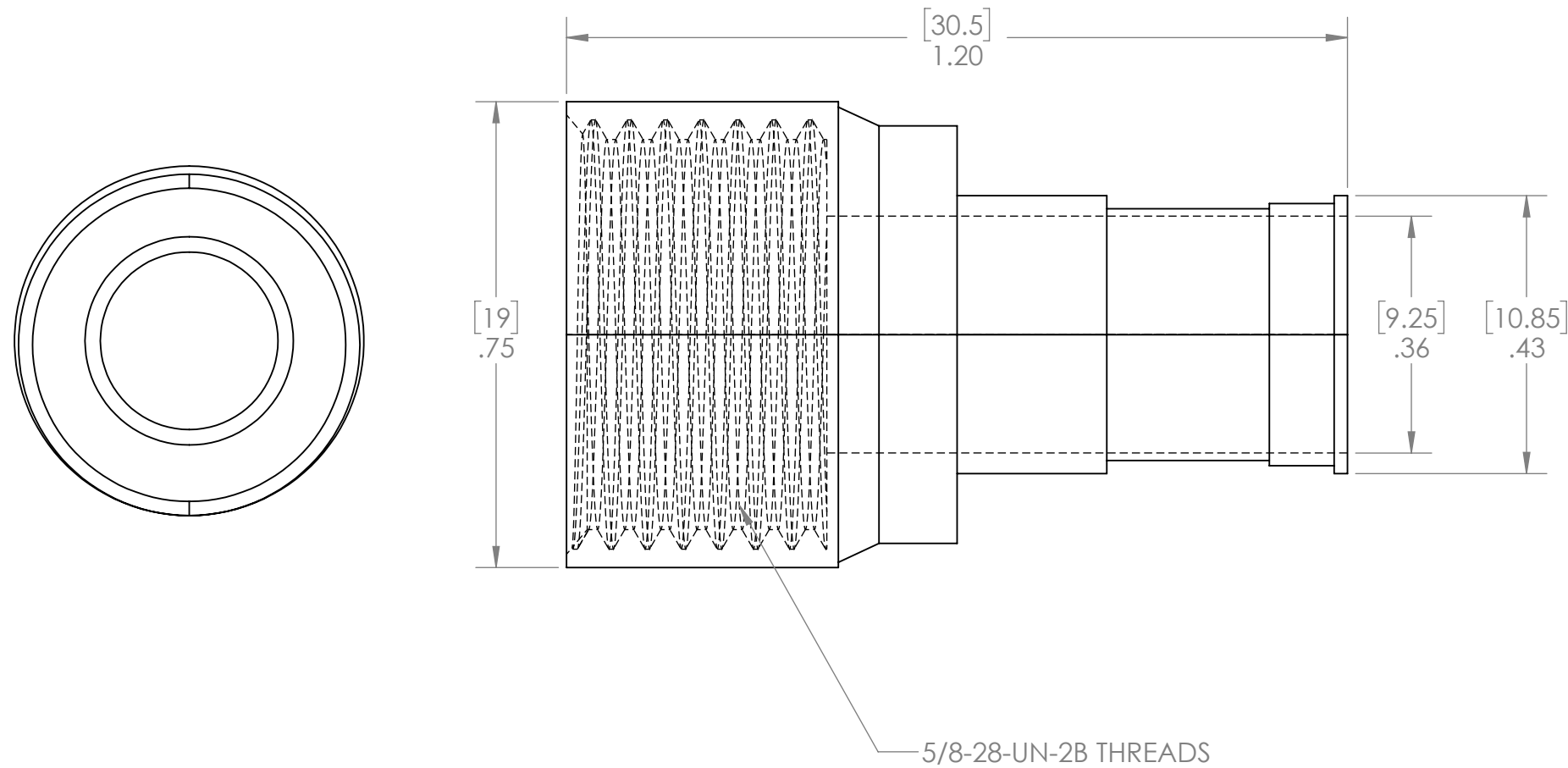
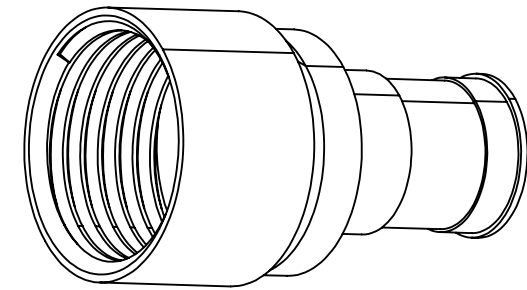


REVISIONS			
REV.	DESCRIPTION	DATE	ENG
A	INITIAL DRAWING RELEASE	8/08/2023	CWA



NOTES:

1. MATERIAL: ALUMINUM
2. FINISH: BREAK ALL EDGES AND DEBURR. (NO PLATING)
3. WIRE EXIT DIAMETER: .36 IN. (9.25 MM)
4. CROSS REFERENCE HARRIS J29-0036-688
5. FOR USE WITH CONNECTOR 078379-6100
6. USE BANDING CLAMP BE-04
7. DIMENSIONS ARE IN INCHES [MM]

UNLESS OTHERWISE SPECIFIED:
 DIMENSIONS ARE IN: INCHES
 TOLERANCES: .XX: ± 0.03
 .XXX: ± 0.005
 ANGULAR: .X°: 1°
 .XX°: 0.5°
 BREAK EDGES: .005 - .020
 FILLETS: .005 - .020
 SURFACE FINISH:
 GEOMETRIC TOLERANCING
 PER: ASME Y14.5 -2009
 MATERIAL: SEE DRAWING NOTES
 FINISH: SEE DRAWING NOTES
 DO NOT SCALE DRAWING

	NAME	DATE
DRAWN	CWA	08/08/2023
CHECKED	MOB	08/08/2023
COMMENTS:		

REF. NUMBER: SN1052

SupplyNet DESIGN ENGINEERING MANUFACTURING

TITLE:
**EMI BACKSHELL FOR
 19 PIN ADF CONNECTOR,
 STRAIGHT**

SIZE	DWG. NO.	REV
B	SN-488-7873-007	A

CAGE CODE: 1HJX9

SCALE: NA WEIGHT: SHEET 1 OF 1