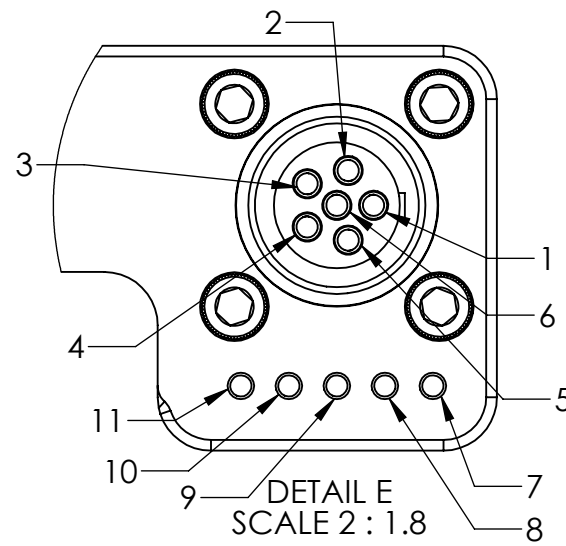
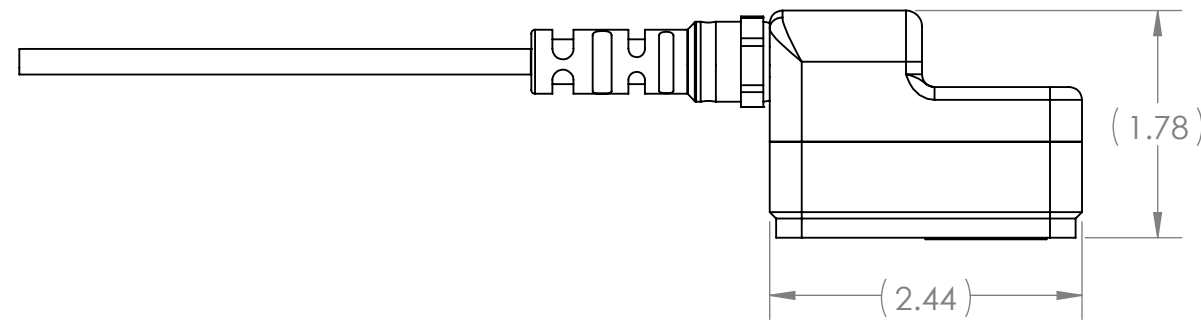
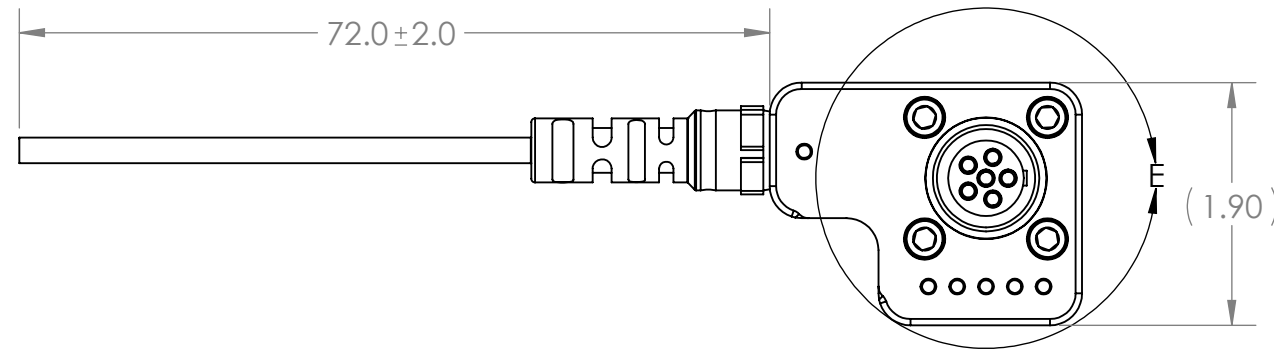
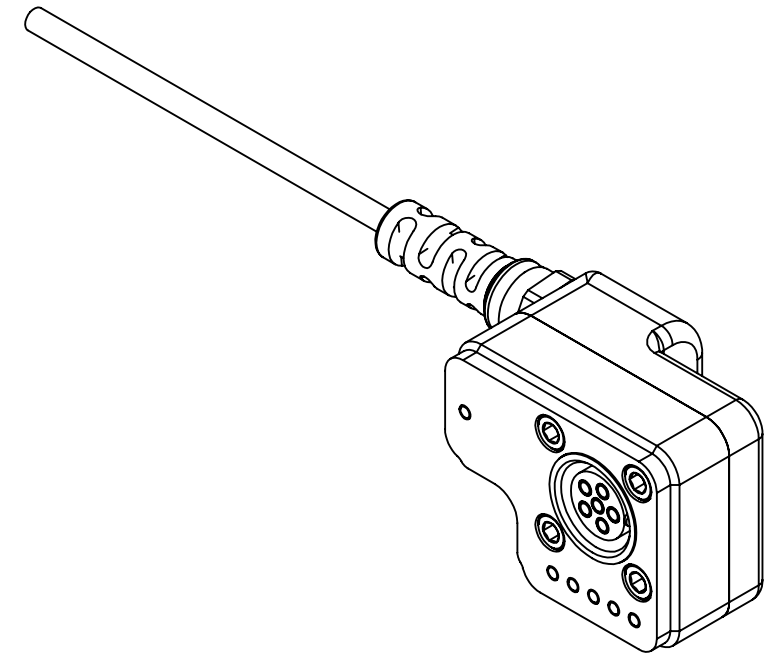


TABLE 1: WIRE RUN		
P1	WIRE COLOR	WIRE AWG
1	BLACK	16
2	BLACK/WHITE	16
3	N/C	
4	RED	16
5	RED/WHITE	16
6	BROWN	22
7	ORANGE	22
8	YELLOW	22
9	GRAY	22
10	PURPLE	22
11	BLUE	22



REVISIONS			
REV.	DESCRIPTION	DATE	ENG
A	INITIAL RELEASE	11/8/2023	MOB



- NOTES:
1. WIRING SHALL BE DONE IN ACCORDANCE WITH TABLE 1 WIRE RUN LIST.
  2. PACKAGING: BAG AND TAG EACH COMPLETED ASSEMBLY PER SN-STD-LBL.
  3. SOLDERING: IAW IPC-J-STD-001 CLASS 2 AS APPLICABLE
  4. ASSEMBLY TO BE 100% TESTED FOR SHORTS, CONTINUITY, AND JACKET RESISTANCE (250V @ 100MOHM MIN.)
  5. MANUFACTURE AND INSPECT IAW IPC/WHMA A-620 CLASS 2.

UNLESS OTHERWISE SPECIFIED:	NAME	DATE
DIMENSIONS ARE IN: INCHES	DRAWN	MOB 11/8/2023
TOLERANCES: .XX: ± 0.03	CHECKED	MOB 11/8/2023
.XXX: ± 0.005	COMMENTS:	
ANGULAR: .X°: 1°	<b>PROPRIETARY AND CONFIDENTIAL</b>	
.XX°: 0.5°	THE INFORMATION CONTAINED IN THIS DRAWING IS THE SOLE PROPERTY OF SUPPLYNET, INC. ANY REPRODUCTION IN PART OR AS A WHOLE WITHOUT THE WRITTEN PERMISSION OF SUPPLYNET INC. IS PROHIBITED.	
BREAK EDGES: .005 - .020	CAGE CODE: 1HJX9	
FILLET: .005 - .020	DO NOT SCALE DRAWING	
SURFACE FINISH:		
GEOMETRIC TOLERANCING PER: ASME Y14.5 -2009		
MATERIAL: SEE DRAWING NOTES		
FINISH: SEE DRAWING NOTES		

REF. NUMBER: SN1090		
TITLE: <b>BB-2590SMBUS TEST JIG, LOAD TESTING CAPABLE</b>		
SIZE <b>B</b>	DWG. NO. <b>CONN-404-M-PWR</b>	REV <b>A</b>
SCALE: NA	WEIGHT:	SHEET 1 OF 1