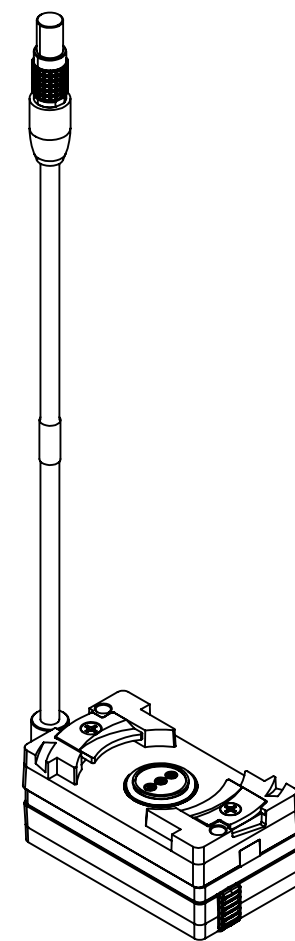
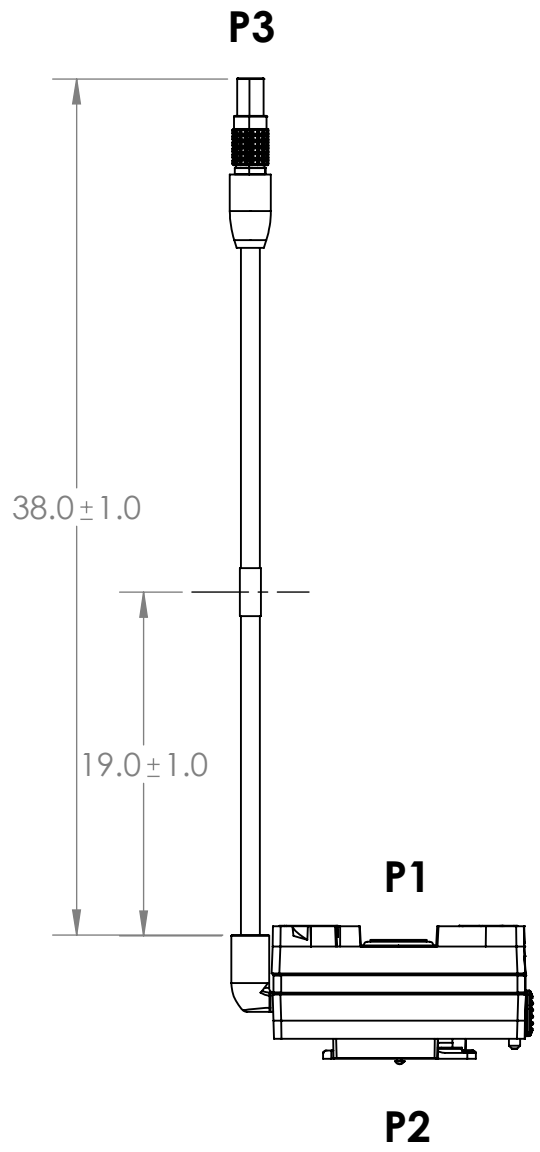
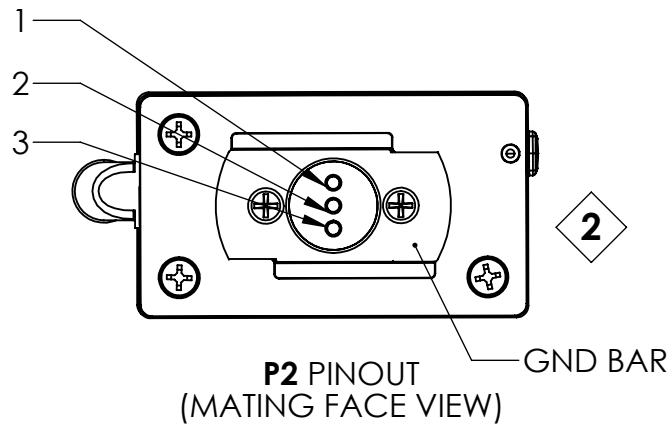
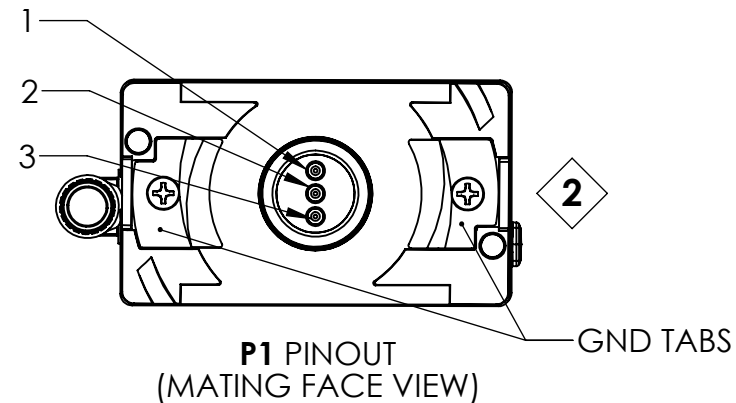


TABLE 1: WIRE RUN				
P1	WIRE COLOR	P2	WIRE COLOR	P3
1, 3	JUMPER WIRE	1, 3	RED	3
2	JUMPER WIRE	2	N/C	
GND TABS	JUMPER WIRE	GND BAR	BLACK	6

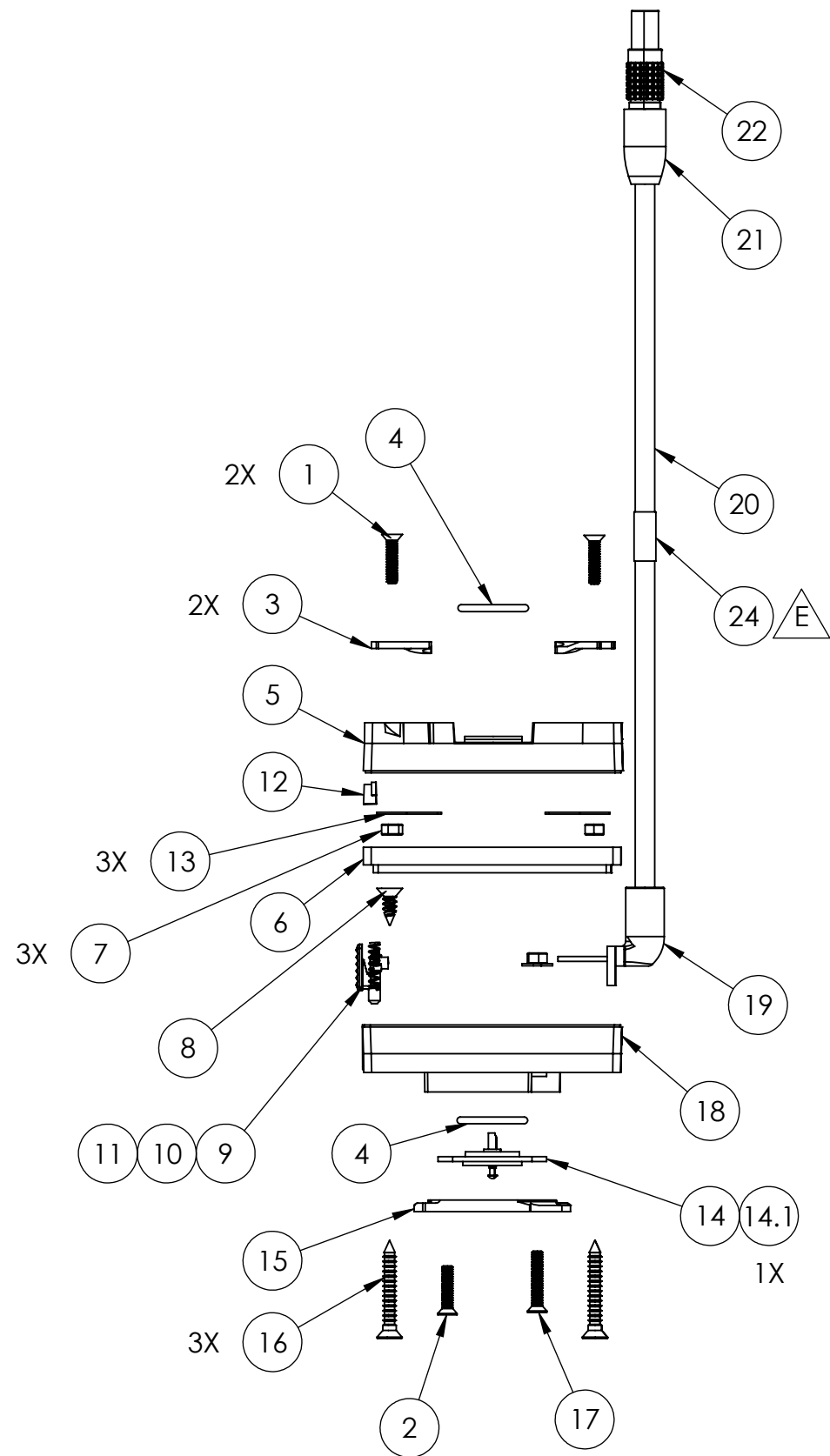
REVISIONS			
REV.	DESCRIPTION	DATE	ENG
A	INITIAL RELEASE	6/28/2023	MOB
B	ADJUSTED BOM SUPPLIER CODES, CHANGED TO NEW THUMB LOCK AND NEW GND BAR	5/22/2024	MOB



- NOTES:
1. WIRING SHALL BE DONE IN ACCORDANCE WITH TABLE 1 WIRE RUN LIST.
 2. COVER ALL SOLDER LOCATIONS WITH POTTING MATERIAL.
 3. CAP AND STOW UNUSED WIRES.
 4. MARKING REQUIREMENTS:
 - A. LABELS SHALL BE MARKED IN ACCORDANCE WITH MIL-STD-130 AS APPLICABLE.
 - B. LABELS SHALL BE WHITE WITH BLACK TEXT.
 - C. LABELS SHALL BE PLACED WHERE SHOWN IN DRAWING.
 - D. ADHESIVE WRAP AROUND LABEL MAY BE USED.
 5. SOLDERING: IAW IPC-J-STD-001 CLASS 2 AS APPLICABLE
 6. ASSEMBLY TO BE 100% TESTED FOR SHORTS & CONTINUITY.
 7. MANUFACTURE AND INSPECT IAW IPC/WHMA A-620 CLASS 2.
 8. MFG CODE: 011
- △ LABEL SHALL BE MARKED WITH THE BELOW INFORMATION ONLY. (REV MARKING PER PO)
PN: SN-832-MOH REV. X
CAGE: 1HJX9
MFD: MM/YY

BOM ON SHEET 2

UNLESS OTHERWISE SPECIFIED:		NAME	DATE	REF. NUMBER: SN1037
DIMENSIONS ARE IN: INCHES TOLERANCES: .XX: ± 0.03 .XXX: ± 0.005 ANGULAR: .X°: 1° .XX°: 0.5° BREAK EDGES: .005 - .020 FILLETS: .005 - .020 SURFACE FINISH:		DRAWN	MOB 6/23/2023	
GEOMETRIC TOLERANCING PER: ASME Y14.5 -2009		CHECKED	RB 6/23/2023	
MATERIAL: SEE DRAWING NOTES FINISH: SEE DRAWING NOTES		COMMENTS:		
DO NOT SCALE DRAWING		PROPRIETARY AND CONFIDENTIAL THE INFORMATION CONTAINED IN THIS DRAWING IS THE SOLE PROPERTY OF SUPPLYNET, INC. ANY REPRODUCTION IN PART OR AS A WHOLE WITHOUT THE WRITTEN PERMISSION OF SUPPLYNET INC. IS PROHIBITED.		TITLE: BATTERY/RADIO DUAL ADAPTER W/ 12V POWER OUT, TO LEMO CONN.
		SIZE	DWG. NO.	REV
		B	SN-832-MOH	B
		SCALE: NA	WEIGHT:	SHEET 1 OF 2



BILL OF MATERIALS			
ITEM NO.	PART NO.	QTY	NAME/DESCRIPTION
1	91771A108*	2	SCREW, 4-40 X 3/8 IN., 18-8 SS, PHL FLT HD SCREW
2	91099A167*	1	SCREW, 4-40 X 1/2 IN., 18-8 SS PHL FLT HD SCREW
3	STEEL-TAB	2	STEEL GND TABS
4	571-063-R70BT	2	RED TEFLON COATED BUNA-N O-RING
5	FE-411-02A2	1	CONNECTOR HOUSING
6	FE-411-02B	1	HOUSING BACK COVER
7	90730A005	3	4-40 HEX NUT
8	90033A150*	1	SCREW, #6 X 1/2 IN. PHL FLT HD, SCREW
9	1116-01-103	1	THUMB LOCK, REV. B
10	1116-01-104	1	ROCKER ARM
11	C0120-014-0500-M	1	SPRING
12	SN-831-INSERT	1	PLASTIC INSERT
13	534-7325*	1	RING TERMINAL
14	1116-01-105-ASSY	1	POGO PIN ASSEMBLY
14.1	500626-000	3	POGO PINS, DOME TOP, GOLD PLATED
15	1116-01-106	1	GND BAR, SS316 NICKEL PLATED
16	90033A160*	3	SCREW, #6 x 1.0 IN. PHL FLT HD, SCREW
17	91099A169*	1	SCREW, 4-40 x 5/8", PHL FLT HD, 18-8 SS
18	1116-01-101-HOLES	1	MBITR CONNECTOR HOUSING & BACK COVER
19	OM-31 (FH-410-A213)	1	RIGHT ANGLE STRAIN RELIEF, OVER-MOLD
20	284C-V08A	42"	4C, AWG 28, PVC JKT, .118 IN. DIA.
21	HS4A-0313-BK	1.25"	SHRINK BOOT, ADHESIVE LINED, POLYOLEFIN, 4:1 RATIO

*OR EQUIVALENT

REF. NUMBER: SN1037



TITLE:
BATTERY/RADIO DUAL ADAPTER W/ 12V POWER OUT, TO LEMO CONN.

SIZE B	DWG. NO. SN-832-MOH	REV B
------------------	-------------------------------	-----------------

PROPRIETARY AND CONFIDENTIAL
THE INFORMATION CONTAINED IN THIS DRAWING IS THE SOLE PROPERTY OF SUPPLYNET, INC. ANY REPRODUCTION IN PART OR AS A WHOLE WITHOUT THE WRITTEN PERMISSION OF SUPPLYNET INC. IS PROHIBITED.