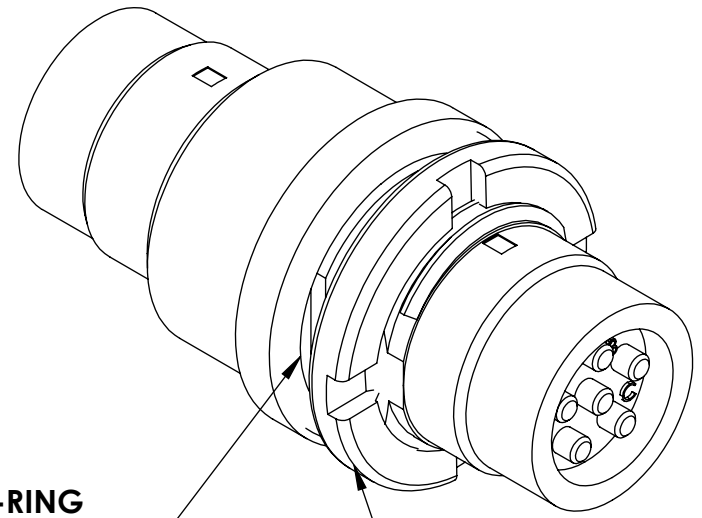
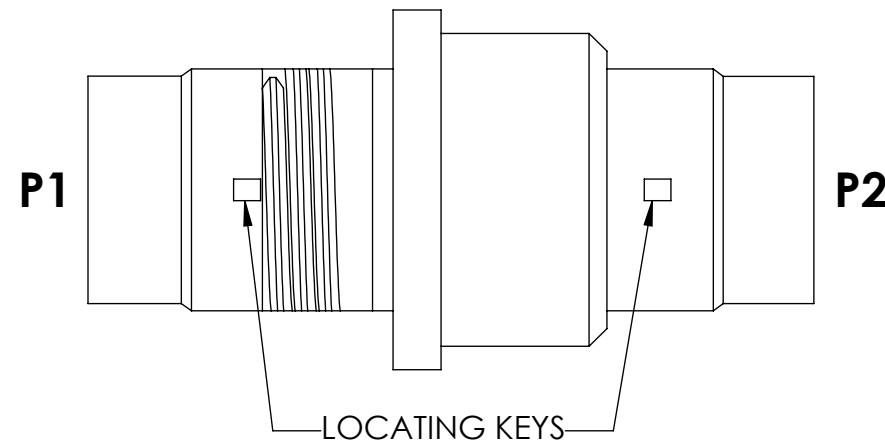


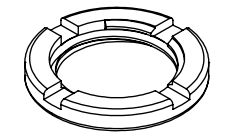
TABLE 1: CONNECTIONS	
P1	P2
A	A
B	B
C	C
D	D
E	E
F	F
SHELL	SHELL

REVISIONS			
REV.	DESCRIPTION	DATE	ENG
A	INITIAL RELEASE	2/23/2024	MOB



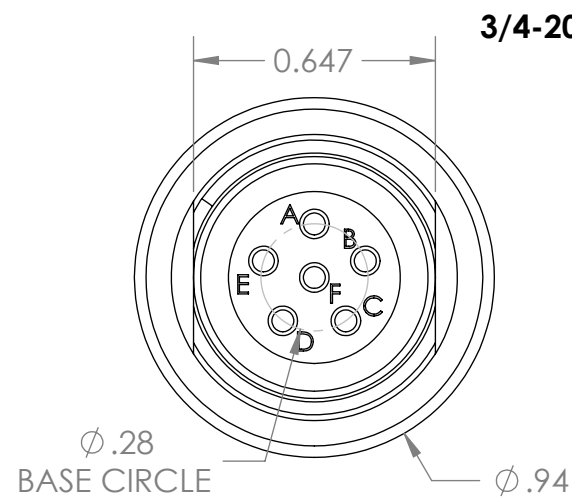
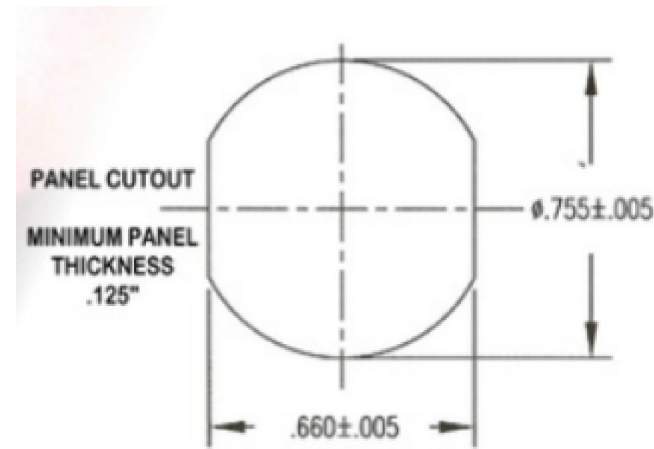
O-RING
(INCLUDED)

THREADED COLLAR
(INCLUDED)

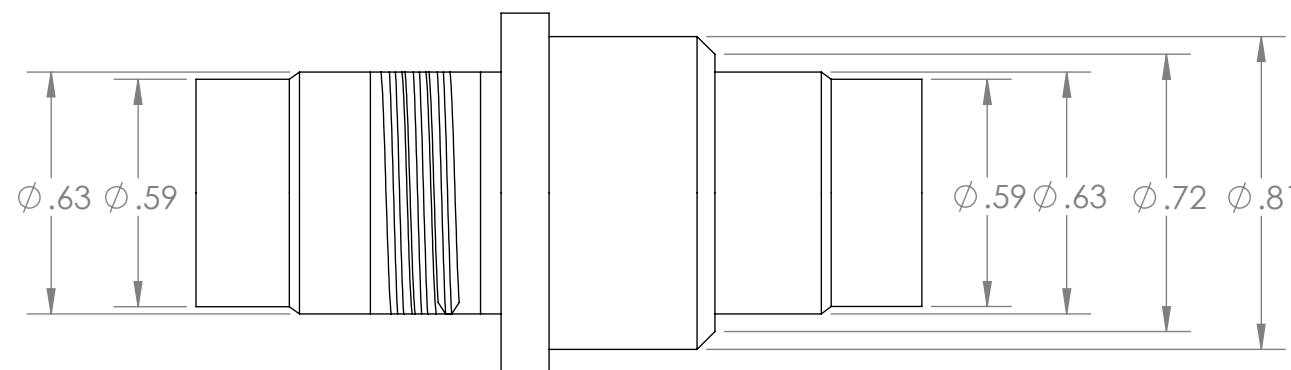
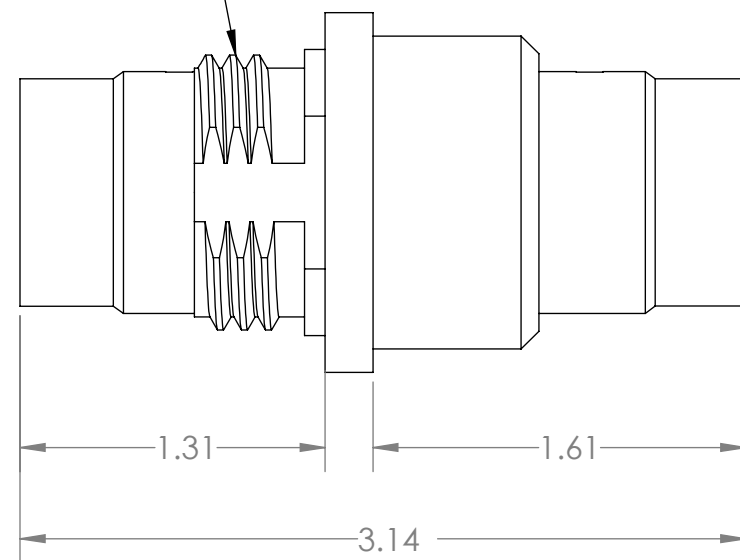


3/4-20 UNEF THREADS

DIAGRAM A:
SUGGESTED PANEL CUTOUT



3/4-20 UNEF THREADS



NOTES:

- RoHS COMPLIANT PRODUCT
- MATERIALS:
SHELL- TYPE 303 STAINLESS STEEL, COND. A
CONTACT PINS- BRASS CDA 360- GOLD PLATING OVER ELECTROLESS NICKEL
SPANNER NUT- TYPE 303 STAINLESS STEEL, COND. A

UNLESS OTHERWISE SPECIFIED:
DIMENSIONS ARE IN: INCHES
TOLERANCES: .XX: ± 0.03
.XXX: ± 0.005
ANGULAR: .X°: 1°
.XX°: 0.5°
BREAK EDGES: .005 - .020
FILLETS: .005 - .020
SURFACE FINISH:
GEOMETRIC TOLERANCING
PER: ASME Y14.5 -2009
MATERIAL: SEE DRAWING NOTES
FINISH: SEE DRAWING NOTES
DO NOT SCALE DRAWING

NAME	DATE
DRAWN MOB	2/23/2024
CHECKED MOB	2/23/2024
COMMENTS:	

REF. NUMBER: SN0558



TITLE:
**U-283 MALE TO MALE PANEL
MOUNT ADAPTOR,
STRAIGHT PASS-THRU**

SIZE	DWG. NO.	REV
B	SN-283FTL	A

SCALE: NA WEIGHT: SHEET 1 OF 1

PROPRIETARY AND CONFIDENTIAL
THE INFORMATION CONTAINED IN THIS
DRAWING IS THE SOLE PROPERTY OF
SUPPLYNET, INC. ANY REPRODUCTION
IN PART OR AS A WHOLE WITHOUT THE
WRITTEN PERMISSION OF SUPPLYNET INC.
IS PROHIBITED.

CAGE CODE: 1HJX9