

8 7 6 5 4 3 2 1

REVISIONS			
REV.	DESCRIPTION	DATE	ENG
A	INITIAL RELEASE	06/13/2024	CWA

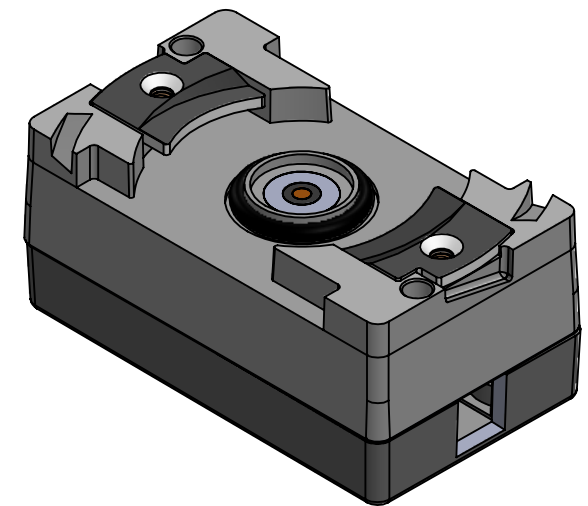
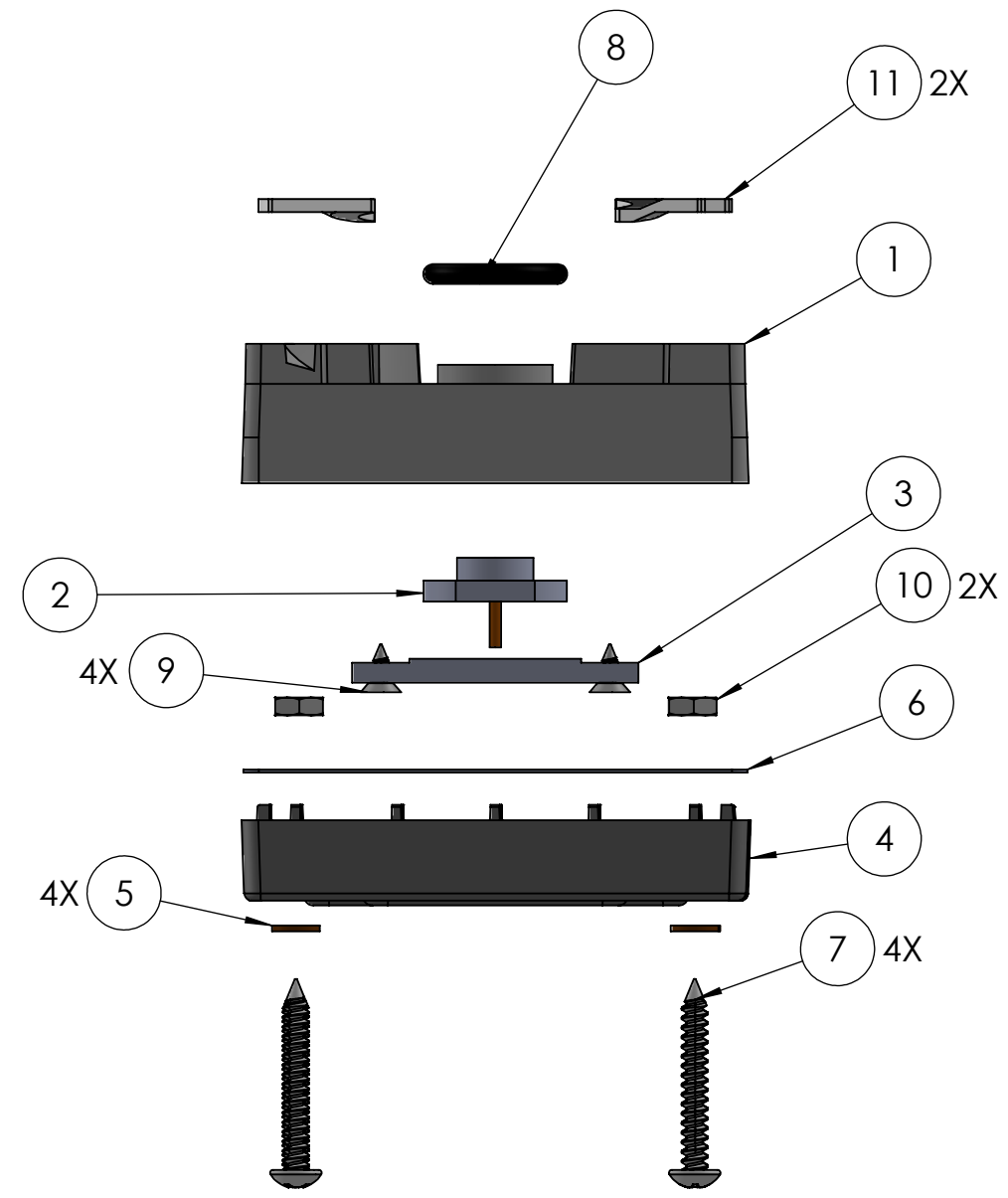
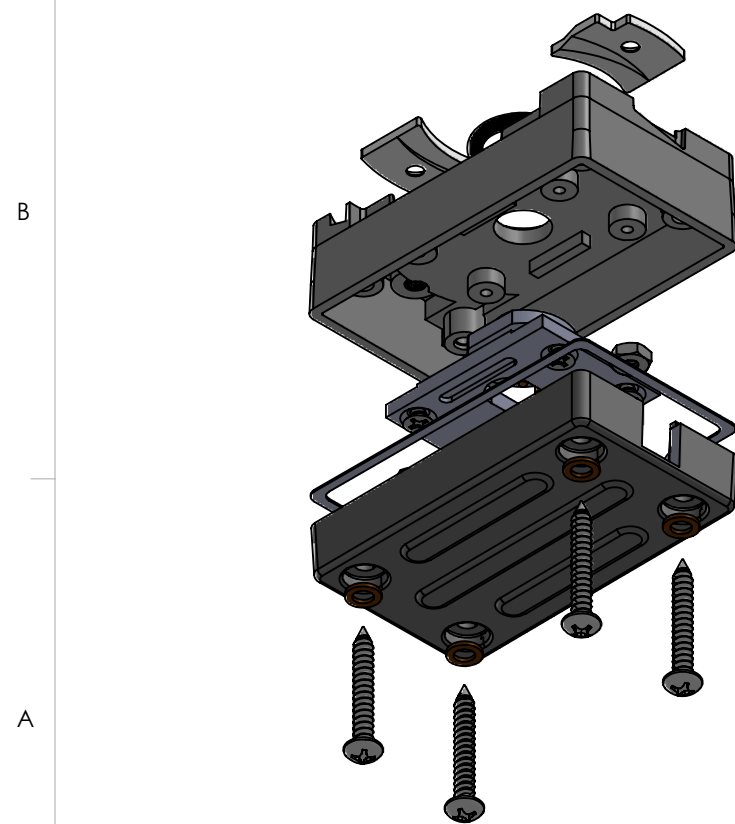
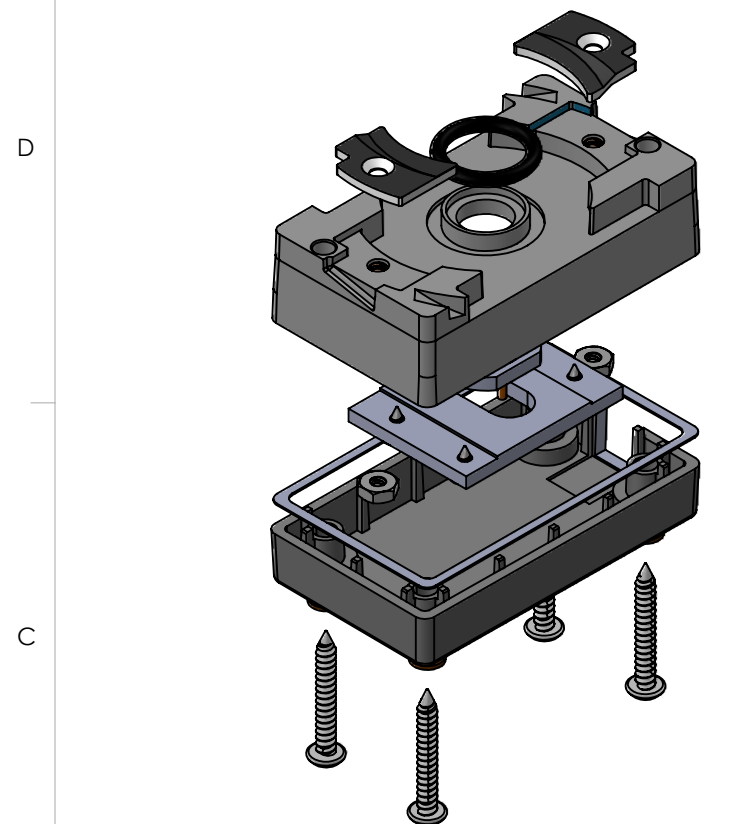


TABLE 2: BILL OF MATERIALS			
ITEM NO.	PART NO	QTY	NAME/DESCRIPTION
1	SN-PRC163-CONN	1	TOP COVER
2	SN-PRC-163-CIRC-ASSY	1	AN/PRC-163 CENTER CONTACT ASSEMBLY, GOLD PLATED
3	SN-PRC-163-3	1	BRACKET/INSULATOR
4	SN-PRC-163-4B	1	PRC-163 DEEP COVER, W/ 9x9mm CUTOUT
5	SN-PRC-163-6	4	SEAL WASHER
6	SN-PRC-163-5	1	ADHESIVE LINED SEALING GASKET
7	90935A153	4	#6 x 1.0 IN. PAN HD, BLK OX SCREW
8	9452K25	1	0.549 IN O-RING (LARGE O-RING)
9	90198A100	4	#4 x 1/4 IN. FLT. HD. SCREW
10	91831A005	2	18-8 SS NYLON-INSERT LOCKNUT, 4-40 THREAD
11	STEEL-TAB-163	2	STEEL GROUND TABS FOR CONN-PRC163

UNLESS OTHERWISE SPECIFIED:
 DIMENSIONS ARE IN: INCHES
 TOLERANCES: .XX: ± 0.03
 .XXX: ± 0.005
 ANGULAR: .X°: 1°
 .XX°: 0.5°
 BREAK EDGES: .005 - .020
 FILLETS: .005 - .020
 SURFACE FINISH:
 GEOMETRIC TOLERANCING
 PER: ASME Y14.5 -2009
 MATERIAL: SEE DRAWING NOTES
 FINISH: SEE DRAWING NOTES
 DO NOT SCALE DRAWING

	NAME	DATE
DRAWN	CWA	06/12/2024
CHECKED	MOB	06/12/2024
COMMENTS:		

REF. NUMBER: SN1202

SupplyNet DESIGN ENGINEERING MANUFACTURING

TITLE: **CONN-PRC163 UNASSEMBLED KIT, INCLUDES DEEP COVER WITH 9X9MM CUTOUT**

SIZE B	DWG. NO. CONN-PRC163-KIT-C1	REV A
---------------	------------------------------------	--------------

CAGE CODE: 1HJX9

SCALE: NA WEIGHT: SHEET 1 OF 1

8 7 6 5 4 3 2 1