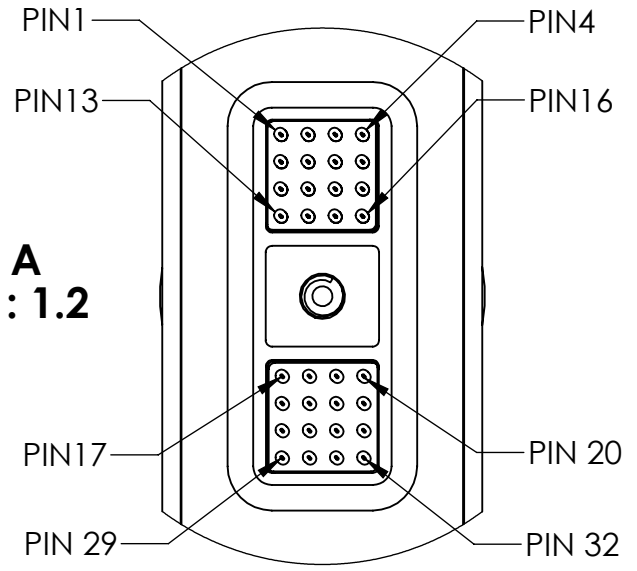
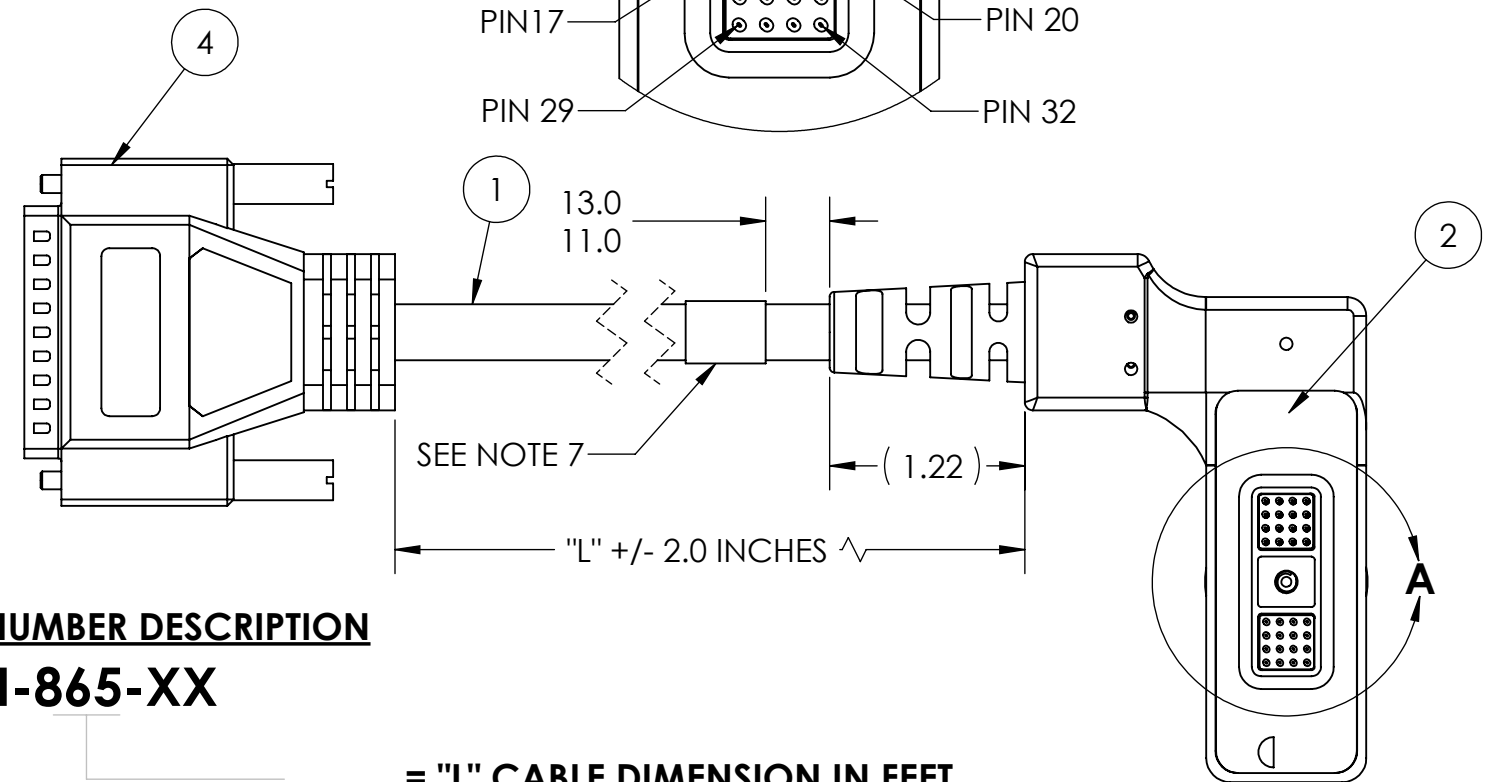


| REVISIONS | | | |
|-----------|---|-----------|-----|
| REV. | DESCRIPTION | DATE | ENG |
| B | UPDATED WIRE RUN LIST P1-1 TO P2-1, P1-3 TO P2-3 | 3/27/2018 | TC |
| C | ADDED P1-28 TO P2-28 TO WIRE RUN | 5/12/2022 | MOB |

**DETAIL A
SCALE 2:1.2**



P1

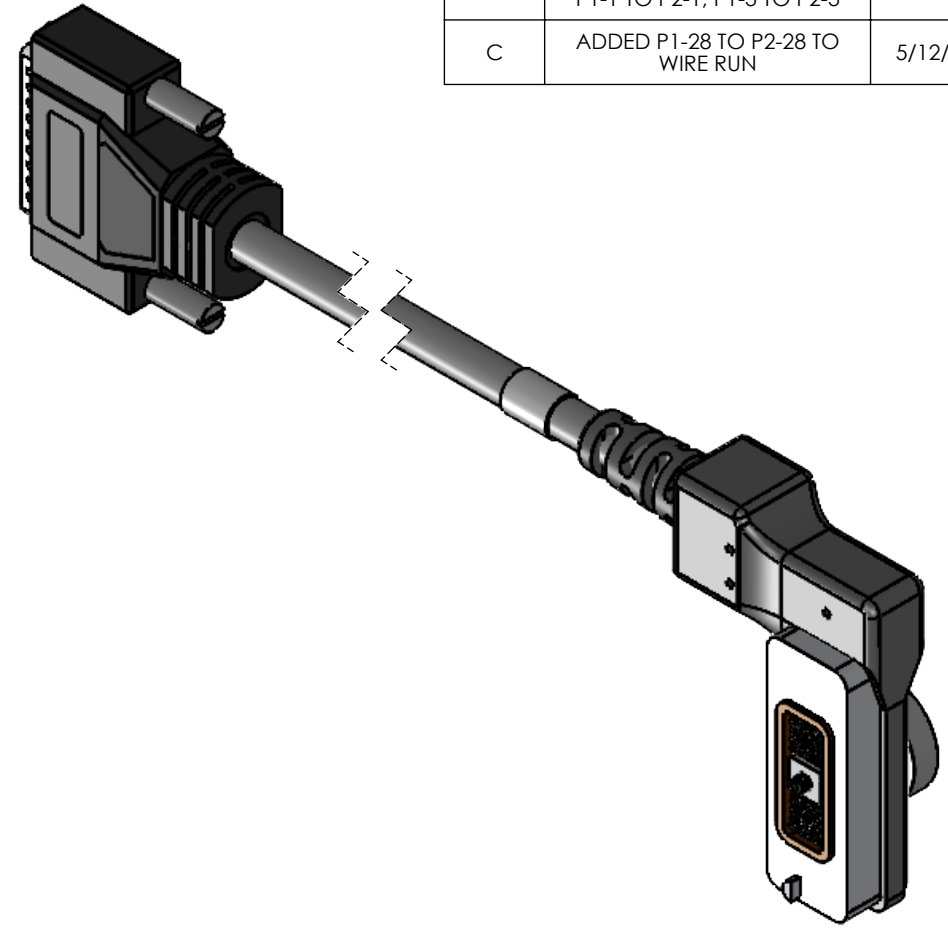


**PART NUMBER DESCRIPTION
SN-865-XX**

**= "L" CABLE DIMENSION IN FEET.
EXAMPLE SN-865-03 HAS AN "L" DIMENSION OF 3 FEET.
REF. TABLE 2.**

NOTES:

- CABLES: ITEM 1:26 AWG, 32 CONDUCTOR,OD: 0.350 NOMINAL. POLYURETHANE INSULATION. OUTER SHIELD 38 AWG, TIN PLATED COPPER BRAID, 90% COVERAGE.
- OVERMOLD MATERIAL: 90A POLYETHER-TYPE THERMOPLASTIC POLYURETHANE (TPU).
- JACKET: BLACK MATTE FINISH.
- E33,E34 IS CHASSIS GROUND
- SOLDERING IAW IPC-J-STD-001CLASS II AS APPLICABLE.
- CABLE ASSEMBLIES TO BE 100% TESTED FOR CONTINUITY, SHORTS AND INSULATION RESISTANCE (250V @100MOHM MINIMUM)
- IDENTIFICATION: IDENTIFY ON PART THE FOLLOWING INFORMATION FOR EACH PART DELIVERED. UOS PART MARKING ON THE WIRE IS PROHIBITED:
PN: SN-865-XX REV X (REV MARKING PER PO & PN PER DESCRIPTION)
CAGE CODE: 1HJX9
DATE OF MFGR: MM/YY
USE ADHESIVE LABEL, WHITE WITH BLACK FONT.
- WIRING FUNCTION AND PIN LOCATION: SEE SHEET 2, TABLE 1 AND DRAWING SN0057.
- MANUFACTURE AND INSPECT IAW IPC/WHMA A-620 CLASS 2.



P2

| BILL OF MATERIALS | | | | |
|-------------------|-------------|-----|--------------------|--|
| ITEM NO. | PART NUMBER | QTY | NAME | COMMENTS |
| 1 | 51367 | AR | WIRE | 32C CABLE |
| 2 | TE-32M-ASSY | 2 | CONNECTOR ASSEMBLY | INCLUDES HOUSING, FASTENERS, THUMBWHEEL. PROVIDED BY SUPPLYNET |
| 3 | TBD | 1 | DB44 MALE | INDUSTRY STANDARD |
| 4 | SN0057 | 1 | PCB | SUPPLYNET PROVIDED. |

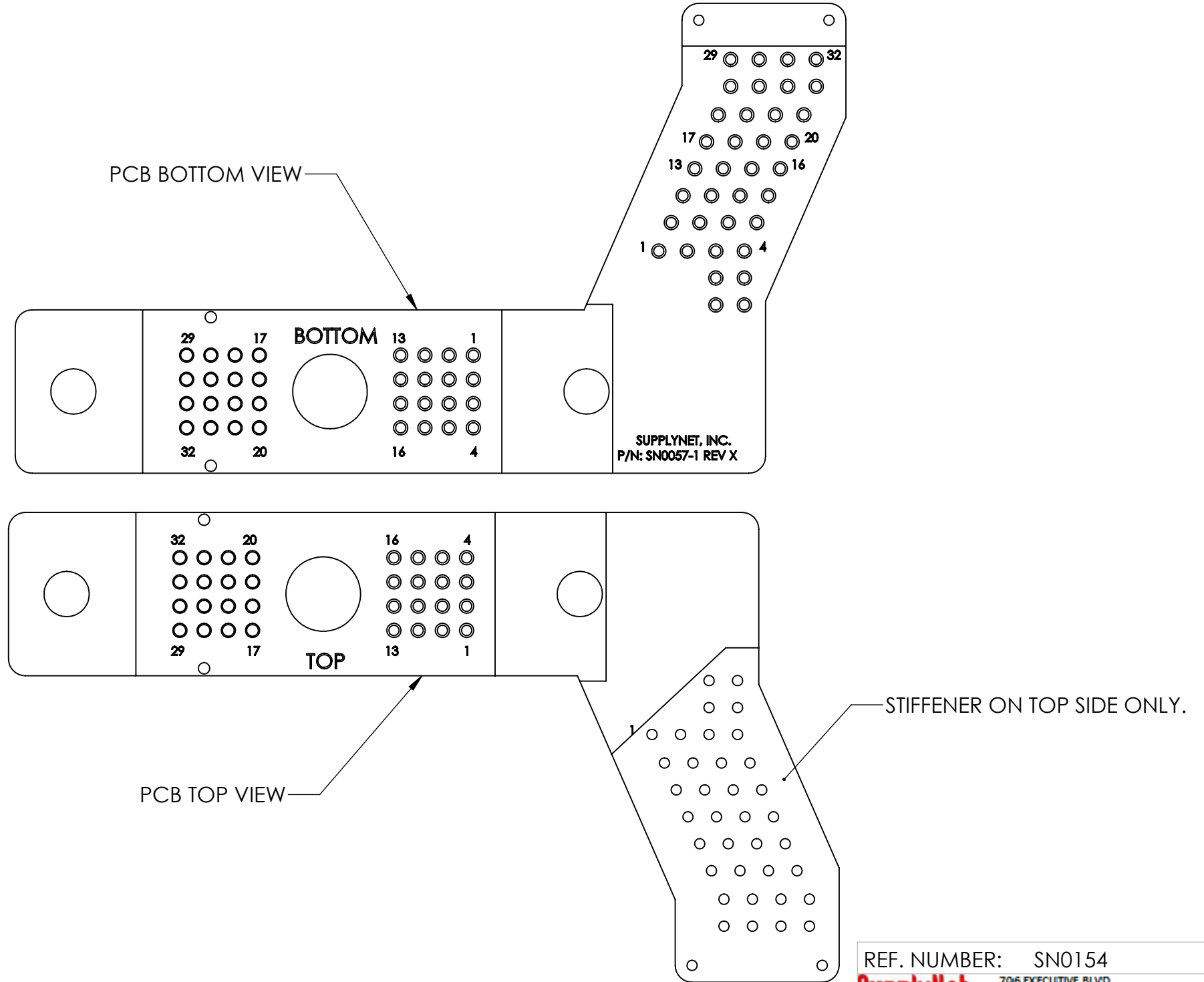
UNLESS OTHERWISE SPECIFIED:
DIMENSIONS ARE IN: INCHES
TOLERANCES: .XX: ± 0.03
.XXX: ± 0.005
ANGULAR: .X°: 1°
.XX°: 0.5°
BREAK EDGES: .005 - .020
FILLETS: .005 - .020
SURFACE FINISH:
GEOMETRIC TOLERANCING
PER: ASME Y14.5 -2009
MATERIAL: SEE DRAWING NOTES
FINISH: SEE DRAWING NOTES
DO NOT SCALE DRAWING

| | | | |
|--|-----|------|----------|
| NAME | RJB | DATE | 04/11/13 |
| DRAWN | RJB | DATE | 04/11/13 |
| CHECKED | RJB | DATE | 04/11/13 |
| COMMENTS: | | | |
| PROPRIETARY AND CONFIDENTIAL | | | |
| THE INFORMATION CONTAINED IN THIS DRAWING IS THE SOLE PROPERTY OF SUPPLYNET, INC. ANY REPRODUCTION IN PART OR AS A WHOLE WITHOUT THE WRITTEN PERMISSION OF SUPPLYNET INC. IS PROHIBITED. | | | |
| CAGE CODE: 1HJX9 | | | |

REF. NUMBER: SN0154
SupplyNet 706 EXECUTIVE BLVD.
SUITE B
VALLEY COTTAGE, NY 10989
TITLE: FRONT EXIT PRC-117G
32 PIN INTERFACE
J3 PORT TO DB44 MALE.
SIZE **B** DWG. NO. SN-865-XX REV **C**
SCALE: NA WEIGHT: SHEET 1 OF 2

| TABLE 1 | | |
|------------------------------------|---------------|----------------------------|
| ITEM 1 (32 C CABLE) | | |
| FROM | TO | WIRE COLOR |
| P1-1 | P2-1 | WHITE / BLACK |
| P1-2 | P2-2 | BLACK / WHITE |
| P1-3 | P2-3 | BROWN / WHITE |
| P1-4 | P2-4 | RED / WHITE |
| P1-5 | P2-5 | RED / BLACK |
| P1-6 | P2-6 | YELLOW / WHITE |
| P1-7 | P2-7 | YELLOW / BLACK |
| P1-8 | P2-8 | PURPLE / WHITE |
| P1-9 | P2-9 | GRAY / WHITE |
| P1-10 | P2-10 | TAN / WHITE |
| P1-11 | P2-11 | TAN / BLACK |
| P1-12 | P2-12 | PINK / WHITE |
| P1-13 | P2-13 | RED |
| P1-14 | P2-14 | YELLOW |
| P1-15 | P2-15 | BLUE |
| P1-16 | P2-16 | BROWN |
| P1-17 | P2-17 | BLACK |
| P1-18 | P2-18 | PURPLE |
| P1-19 | P2-19 | GRAY |
| P1-20 | P2-20 | PINK |
| P1-21 | P2-21 | TAN |
| P1-22 | P2-22 | LIGHT GREEN * |
| P1-23 | P2-23 | LIGHT BLUE * |
| P1-24 | P2-24 | GREEN TWISTED PAIR |
| P1-25 | P2-25 | WHITE |
| P1-26 | P2-26 | DARK ORANGE ** |
| P1-27 | P2-27 | DARK BLUE ** |
| P1-28 | P2-28 | PINK/BLACK |
| P1-29 | P2-29 | DARK GREEN ** TWISTED PAIR |
| P1-30 | P2-30 | CLEAR |
| P1-31 | P2-31 | ORANGE TWISTED PAIR |
| P1-32 | P2-32 | CLEAR |
| P1-CHASSIS | P2-E33 OR E34 | BRAIDED SHIELD |
| * OPTIONAL WHITE BAND FOR CLARITY | | |
| ** OPTIONAL BLACK BAND FOR CLARITY | | |

| TABLE 2 | |
|----------------------------|------------------------|
| PART NUMBER & PART MARKING | "L" DIMENSION (INCHES) |
| SN-865-03 | 36 |
| SN-865-06 | 72 |
| SN-865-08 | 96 |
| SN-865-10 | 120 |
| SN-865-12 | 144 |
| SN-865-18 | 216 |
| SN-865-20 | 240 |
| SN-865-25 | 300 |
| SN-865-30 | 360 |



REF. NUMBER: SN0154
SupplyNet 706 EXECUTIVE BLVD.
 SUITE B
 VALLEY COTTAGE, NY 10989

TITLE:
 FRONT EXIT PRC-117G
 32 PIN INTERFACE
 J3 PORT TO DB44 MALE.

PROPRIETARY AND CONFIDENTIAL
 THE INFORMATION CONTAINED IN THIS
 DRAWING IS THE SOLE PROPERTY OF
 SUPPLYNET, INC. ANY REPRODUCTION
 IN PART OR AS A WHOLE WITHOUT THE
 WRITTEN PERMISSION OF SUPPLYNET INC.
 IS PROHIBITED.

| | | |
|------------------|-----------------------|-----------------|
| SIZE B | DWG. NO. SN-865-XX | REV C |
|------------------|-----------------------|-----------------|

CAGE CODE: 1HJX9 SCALE: NA WEIGHT: SHEET 2 OF 2