

THIS DOCUMENT IS COMMERCIAL AND NOT SUBJECT TO EXPORT CONTROL.

NOTES

1. DIMENSIONS ARE NOMINAL UNLESS STATED OTHERWISE.
2. PICTORIALLY SHOWN WITH BOTH JAMNUTS.
FOR ALTERNATIVES SEE TABLE SHEET 2
3. ELECTRICAL RATING 50 VDC, 2A CONTINUOUS, 3A PEAK (LIMITED BY MATING HALF).
IR > 5000 Mohms (> 1000 Mohm after immersion) 100 vdc
DWV > 500v
100VDC, GREATER THAN 5 GOHMS.
4. OPERATING TEMPERATURE -55°C TO +125°C
5. SEALED TO IP68 - SEE SHEET 2
6. ANGULAR ORIENTATION OF INTERFACE MUST BE WITHIN +/- 2° OF MASTER KEY ϕ .
7. O RING SEAL AND NUT TO BE SUPPLIED LOOSELY FITTED.
8. CONNECTOR MARKING - LASER MARK 'ITT' YYWW & LOT CODE ON UNDERSIDE OF FLANGE IN APROX POSITION SHOWN.
9. RECEPTACLE SUITABLE FOR TERMINATION TO STANDARD NEM-QTXX
10. MATERIALS / FINISH :-
BODY PARTS.....ST. STEEL.....BLACK ELECTROLESS NICKEL
INSULATORS.....HIGH TEMPERATURE THERMOPLASTIC.
SEALS.....FLOUROSILICONE.
CONTACTS.....COPPER ALLOY.....GOLD.
O RING.....FLOUROSILICONE OR CONDUCTIVE ELASTOMER.
11. ▼ INDICATES CRITICAL INSPECTION DIMENSION

A



7 WAY CONNECTOR SHOWN WITH HEX NUT

B



14 WAY CONNECTOR SHOWN WITH TAMPERPROOF NUT

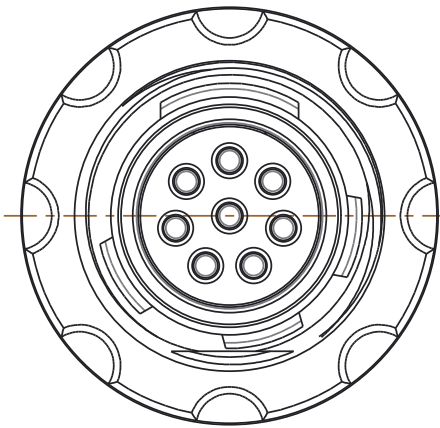
C



19 WAY CONNECTOR SHOWN WITH HEX NUT

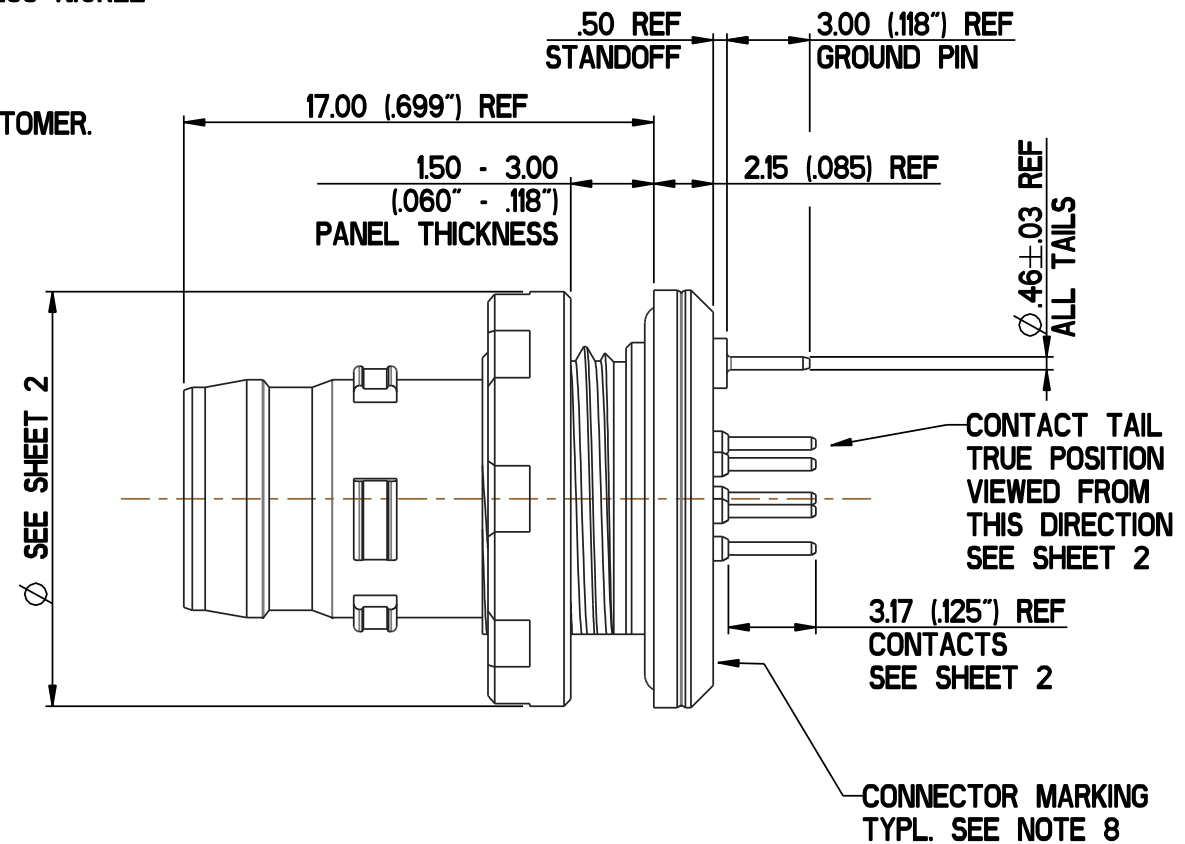
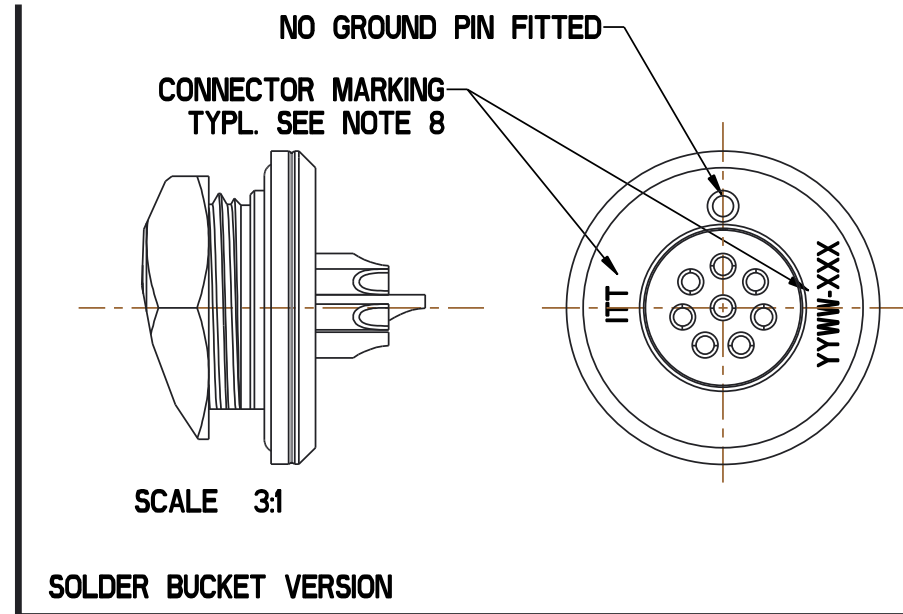
D

CODING COLOUR BAND IN GROOVE ON MASTER KEY SEE TABLE SHEET 2



8 WAY CONNECTOR SHOWN WITH TAMPERPROOF NUT

E



| | | | | |
|---------------------|-------------|-----------|--------|-----------|
| INITIAL RELEASE | PJ | 28-Mar-18 | Alowne | 28-Mar-18 |
| PRELIMINARY RELEASE | PJ | 2-Nov-17 | | |
| REV | ECR DETAILS | DRAWN | DATE | CHK'd |



| | |
|------------------------------------------------------------|----------------------------------------------------------------------------|
| DO NOT SCALE / IF IN DOUBT, ASK | |
| LINEAR TOLERANCES X = ±0.4 X.X = ±0.2 X.XX = ±0.1 | GENERAL UNLESS OTHERWISE STATED REMOVE BURRS AND BREAK SHARP EDGES MAX. |
| ANGULAR TOLERANCES X = ±2° X.X = ±0.5° | SURFACE FINISH: ✓ |
| ALL DIMENSIONS ARE IN "mm" UNLESS STATED | |

| | | | |
|-----------|-----------|------------------------|-----|
| MATERIAL | | THIRD ANGLE PROJECTION | |
| FINISH | | ROC | |
| CofG (td) | CofG (ty) | CofG (tz) | VOL |
| 0.000 | 0.000 | 0.000 | () |
| TREATMENT | | MASS | |
| | | 0.000mg (0.000drams) | |

| | | |
|-----------------------------|--------------|------------------|
| PART No. VARIOUS | TYPE : CU | CAGE CODE : 7468 |
| MASTER DRAWING | | |
| NEMESIS RECEPTACLE ASSEMBLY | | |
| CLOCKINGS N, A, B, C, D | | |
| CU076399Y0000 | | |
| Ref | SHEET 1 of 2 | SCALE 4:1 |

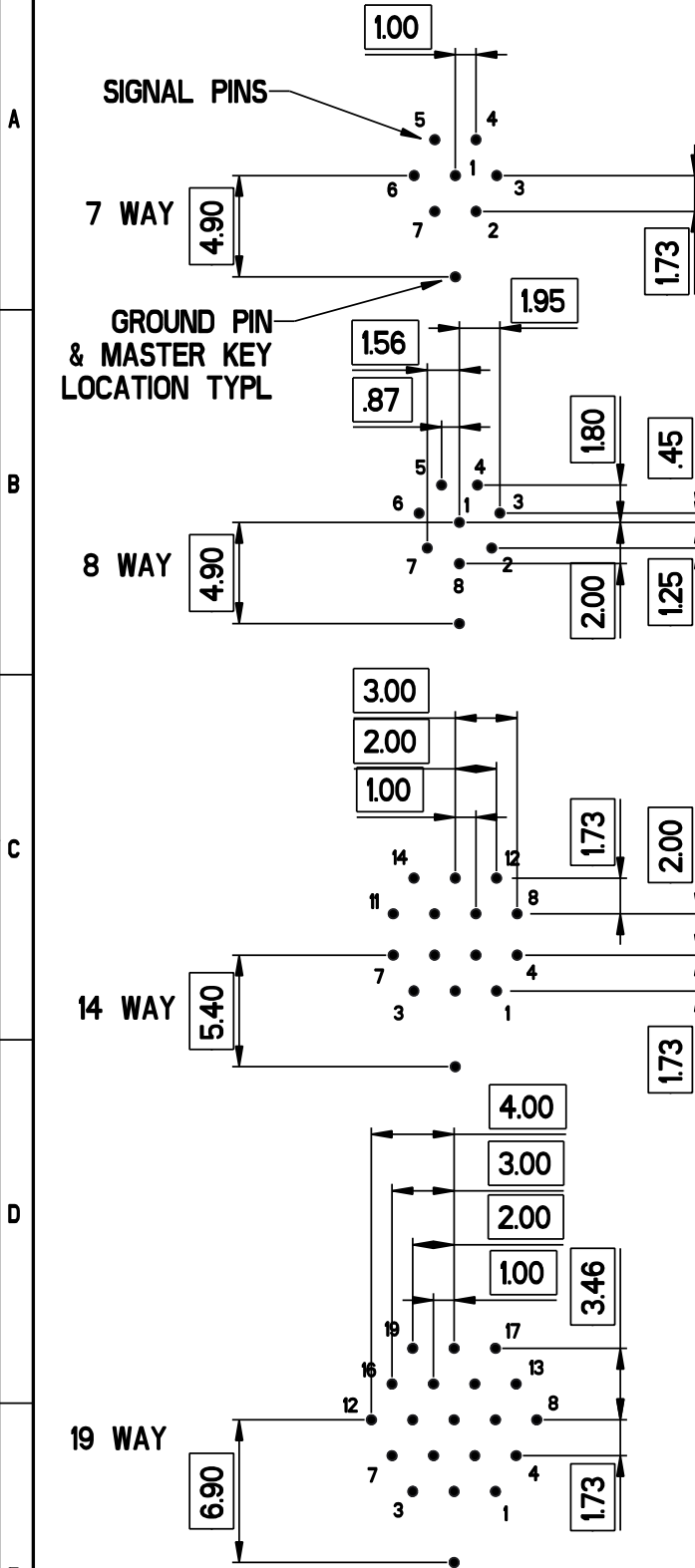
This is issued in strict confidence on condition that it is not used as a basis for manufacture or sale and that it is not copied printed or disclosed to a third party either wholly or in part without the prior written consent of ITT Corporation 0 21-Jun-17 All rights reserved.

EXPORT CODE C

This document contains technical data that is subject to export controls under the Export Administration Act and Export Administration Regulations (15 CFR 730, et seq.). Any transfer of this data to non-US persons or to any location outside the United States must be in compliance with the Export Administration Regulations.

PRINTED COPIES ARE NOT MAINTAINED TO LATEST REVISION.

THIS DOCUMENT IS COMMERCIAL AND NOT SUBJECT TO EXPORT CONTROL.



PC TAIL LAYOUTS VIEWED FROM BACK FACE

SEE SHEET 1 FOR REVISIONS

NEM-QTHS SB 7 14 PP N S - B 2 H

NEMESIS - QUICK TERMINATION HIGH SPEED SNAPON BREAKAWAY BULKHEAD RECEPTACLE CONNECTOR

| CONTACT ARRANGEMENT | |
|---------------------|-------------|
| 7 | 7 CONTACTS |
| 8 | 8 CONTACTS |
| 14 | 14 CONTACTS |
| 19 | 19 CONTACTS |

| CLOCKING | |
|----------|--------------------|
| N | COLOUR MARK BLUE |
| A | COLOUR MARK RED |
| B | COLOUR MARK GREEN |
| C | COLOUR MARK GREY |
| D | COLOUR MARK YELLOW |

| ACCESSORIES | |
|-------------|--------------------|
| H | HEX JAMNUT |
| T | TAMPERPROOF JAMNUT |

| SEALING DEPTH | |
|---------------|------------------------------|
| NONE | 2M FOR 1 HOUR - FVMQ O-RING |
| 1 | 2M FOR 1 HOUR - EMI O-RING |
| 2 | 20M FOR 1 HOUR - FVMQ O-RING |

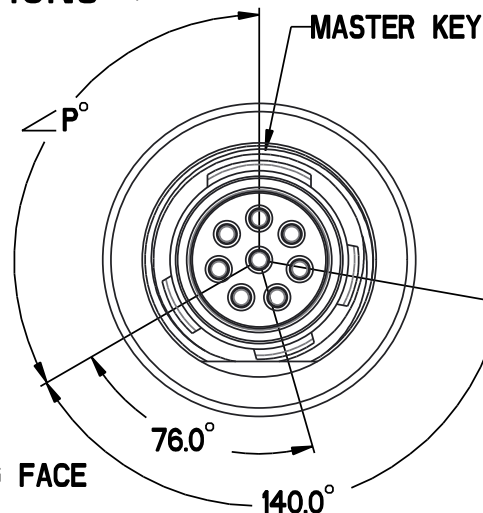
| HARDWARE FINISH | |
|-----------------|--------------------------|
| B | BLACK ELECTROLESS NICKEL |
| N | ELECTROLESS NICKEL |

| TERMINATION TYPE | |
|------------------|---------------------------------|
| S | SOLDER CUP 22 awg MAX |
| T | PCB TAIL ϕ 0.46 x 3.0 LONG |

CONNECTOR DESCRIPTION

CLOCKING KEY POSITIONS

| CLOCKING | 'P' | COLOUR CODING |
|----------|-----|---------------|
| N | 120 | BLUE |
| A | 132 | RED |
| B | 108 | GREEN |
| C | 96 | GREY |
| D | 84 | YELLOW |



VIEWED FROM MATING FACE

JAMNUT DETAILS

| HEX JAMNUT DETAILS (H) | | |
|--------------------------|--------------|----------------|
| | ACROSS FLATS | ACROSS CORNERS |
| 7/8 WAY | 12.70 (.5") | 14.66 |
| 14 WAY | 15.88 | 18.34 |
| 19 WAY | 17.46 | 20.16 |

| TAMPERPROOF JAMNUT DETAILS (T) | | |
|----------------------------------|-------------------|--------------|
| | DIAMETER | USE TOOL |
| 7/8 WAY | ϕ 15 (.590") | 317-2187-019 |
| 14 WAY | ϕ 18 (.701") | 317-2187-020 |
| 19 WAY | ϕ 19 (.748") | 317-2187-004 |

| REV | DESCRIPTION | DATE | CHK'd | DATE |
|-----|---------------------|-----------|-------|-----------|
| 1 | PRELIMINARY RELEASE | 28-Mar-18 | PJ | 28-Mar-18 |
| 1 | ECR DETAILS | 2-Nov-17 | PJ | 2-Nov-17 |

ITT
JAYS CLOSE,
VIABLES INDUSTRIAL ESTATE,
BASINGSTOKE UK. RG22 4BA.

DO NOT SCALE / IF IN DOUBT, ASK.
LINEAR TOLERANCES
X.X = ± 0.4
X.XX = ± 0.2
X.XXX = ± 0.1
ANGULAR TOLERANCES
X = $\pm 2^\circ$
X.X = $\pm 0.5^\circ$
GENERAL
UNLESS OTHERWISE STATED REMOVE BURRS AND BREAK SHARP EDGES MAX.
SURFACE FINISH:

MATERIAL:
FINISH:
TREATMENT:

THIRD ANGLE PROJECTION
NTC: Not RoHS Compliant
ROC: RoHS Compliant low temp
ROH: RoHS Compliant high temp (260°C)
CofG (td) 0.000
CofG (ty) 0.000
CofG (zd) 0.000
VOL ()
S.A. ()
MASS 0.000mg (0.000drams)

PART No. VARIOUS TYPE: CU CAGE CODE: 7468
MASTER CUSTOMER DRAWING
NEMESIS RECEPTACLE ASSEMBLY
CLOCKINGS N, A, B, C, D
CU076399Y0000
Ref SHEET 2 of 2 SCALE 2:1

This is issued in strict confidence on condition that it is not used as a basis for manufacture or sale and that it is not copied printed or disclosed to a third party either wholly or in part without the prior written consent of ITT Corporation. © 21-Jun-17 All rights reserved.

EXPORT CODE C

This document contains technical data that is subject to export controls under the Export Administration Act and Export Administration Regulations (15 CFR 730, et seq.). Any transfer of this data to non-US persons or to any location outside the United States must be in compliance with the Export Administration Regulations.

PRINTED COPIES ARE NOT MAINTAINED TO LATEST REVISION.