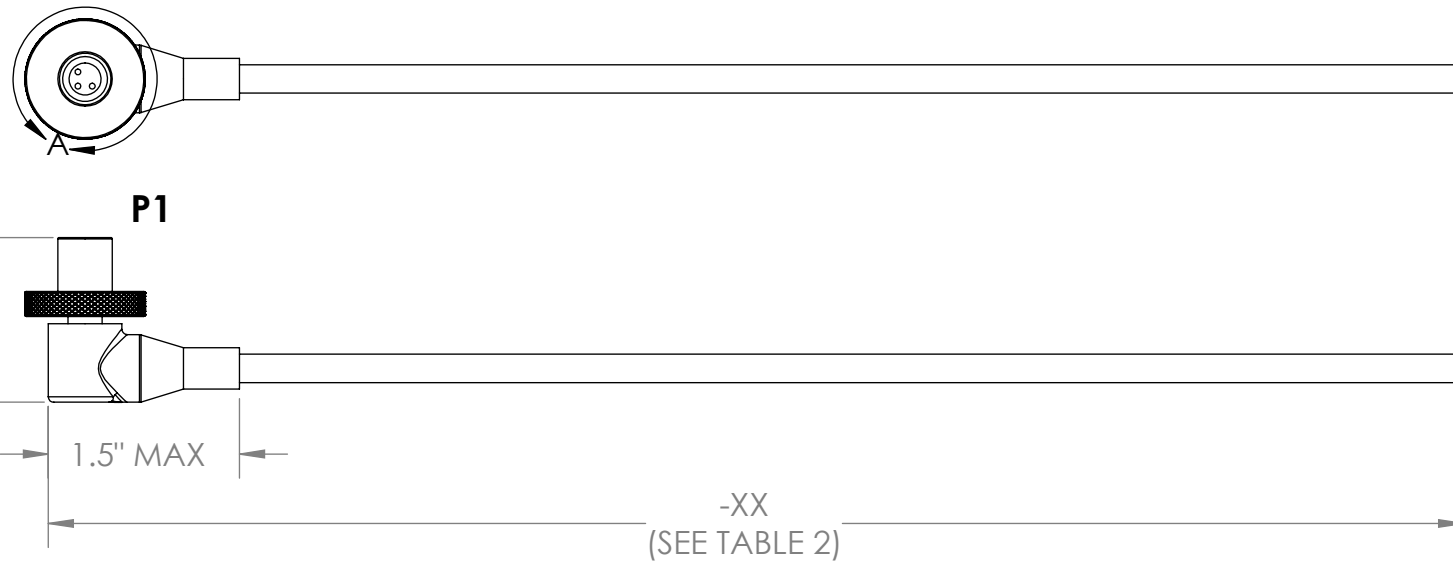
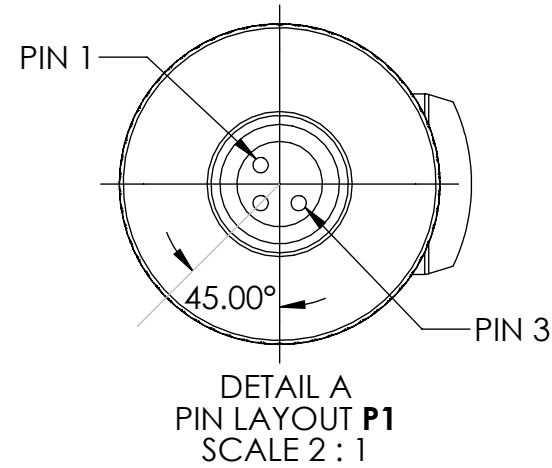
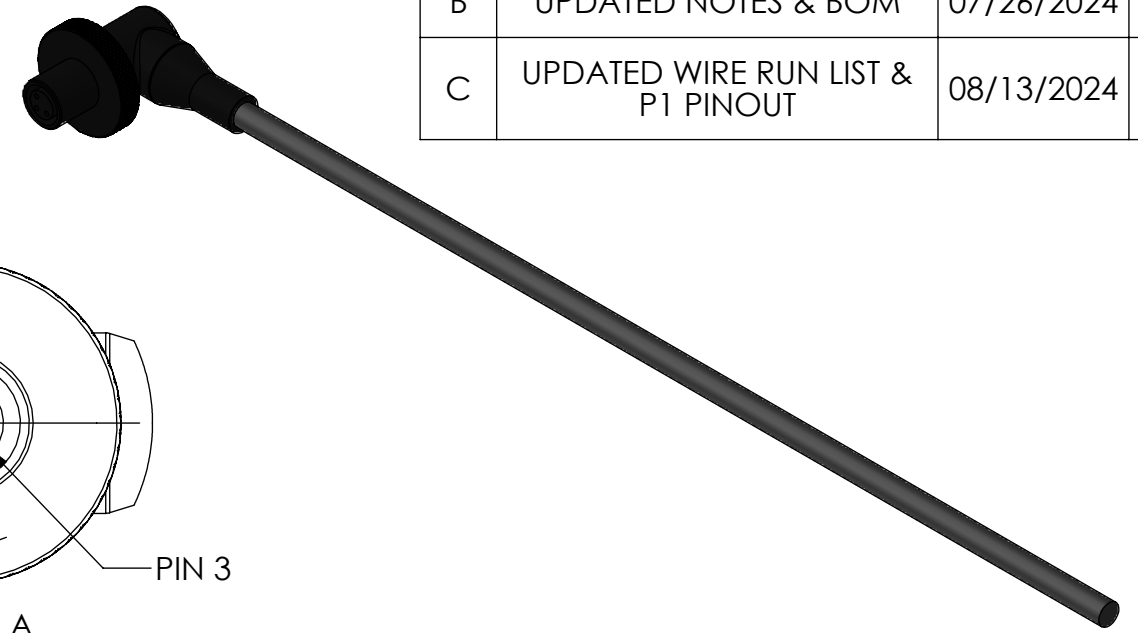


TABLE 1: WIRING	
P1	WIRE COLORS
1	BLACK, SHIELD*
2	N/C
3	WHITE

\*PIN 1 ATTACHED TO BLACK WIRE AND CABLE SHIELD

TABLE 2: CABLE LENGTH		
PART NUMBER	"-XX" DIMENSION (INCHES)	TOLERANCE (INCHES)
SN-07006B0034-01	12	+1.0", -0.0"
SN-07006B0034-02	24	+2.0", -0.0"
SN-07006B0034-03	36	+2.0", -0.0"
SN-07006B0034-04	48	+2.0", -0.0"
SN-07006B0034-05	60	+2.0", -0.0"
SN-07006B0034-06	72	+4.0", -0.0"
SN-07006B0034-07	84	+4.0", -0.0"
SN-07006B0034-08	96	+4.0", -0.0"
SN-07006B0034-09	108	+4.0", -0.0"
SN-07006B0034-10	120	+4.0", -0.0"
SN-07006B0034-11	132	+6.0", -0.0"
SN-07006B0034-12	144	+6.0", -0.0"
SN-07006B0034-14	168	+6.0", -0.0"

REVISIONS			
REV	DESCRIPTION	DATE	ENG
A	INITIAL RELEASE	05/06/2019	LS
B	UPDATED NOTES & BOM	07/26/2024	CWA
C	UPDATED WIRE RUN LIST & P1 PINOUT	08/13/2024	CWA



BILL OF MATERIALS			
ITEM NO.	PART NO	QTY	NAME/DESCRIPTION
1	07006B0035	1	CONNECTOR, DAGR POWER
2	07006B0036	1	SPINNER, DAGR POWER
3	M3432-02LHE(2/20)SJ0250	-XX	CABLE, SHIELDED TWISTED PAIR

NOTES:

1. WIRING SHALL BE DONE IN ACCORDANCE WITH TABLE 1 WIRE RUN LIST.
2. PACKAGING REQUIREMENTS:
  - A. EACH COMPLETED ASSEMBLY SHALL BE PACKAGED IN A ZIP POLYBAG.
  - B. CONNECTOR(S) SHALL BE PACKAGED TO PREVENT DAMAGE DURING SHIPPING. BUBBLE WRAP OR PROTECTIVE COVER MUST BE USED.
  - C. POLYBAG SHALL BE MARKED WITH SUPPLYNET LOGO, PRODUCT QR CODE, PART NUMBER, CAGE CODE, AND LOT NO, PER SN-STD-LBL REQUIREMENTS.
3. WORKMANSHIP REQUIREMENTS:
  - A. MANUFACTURE TO IAW/WHMA A-620 CLASS 2 REQUIREMENTS.
  - B. SOLDERING SHALL BE COMPLIANT WITH IAW J-STD-001 AS APPLICABLE.
  - C. CONNECTOR(S) AND WIRE SHALL BE FREE FROM ANY SCRATCHES, CHIPS, AND DEFECTS.
4. INSPECTION REQUIREMENTS:
  - A. EACH COMPLETED ASSEMBLY TO BE 100% TESTED FOR SHORTS, CONTINUITY, AND JACKET RESISTANCE (250V @100MOHM MIN.)
  - B. INSPECT TO IPC/WHMA A-620 CLASS 2 REQUIREMENTS.

UNLESS OTHERWISE SPECIFIED:		NAME	DATE	REF. NUMBER: SN0642
DIMENSIONS ARE IN: INCHES		DRAWN	LS 5/6/2019	
TOLERANCES: .XX: ± 0.03		CHECKED	RB 5/6/2019	TITLE: <b>CABLE ASSEMBLY, PIGTAIL, DAGR POWER, VARIABLE LENGTH</b>
.XXX: ± 0.005		COMMENTS:		
ANGULAR: .X°: 1°		<b>PROPRIETARY AND CONFIDENTIAL</b> THE INFORMATION CONTAINED IN THIS DRAWING IS THE SOLE PROPERTY OF SUPPLYNET, INC. ANY REPRODUCTION IN PART OR AS A WHOLE WITHOUT THE WRITTEN PERMISSION OF SUPPLYNET INC. IS PROHIBITED.		
.XX*: 0.5°				
BREAK EDGES: .005 - .020		SIZE	DWG. NO.	REV
FILLET: .005 - .020		<b>B</b>	<b>SN-07006B0034-XX</b>	<b>C</b>
SURFACE FINISH:		SCALE: NA	WEIGHT:	SHEET 1 OF 1
GEOMETRIC TOLERANCING PER: ASME Y14.5 -2009		CAGE CODE: 1HJX9		
MATERIAL: SEE DRAWING NOTES				
FINISH: SEE DRAWING NOTES				
DO NOT SCALE DRAWING				