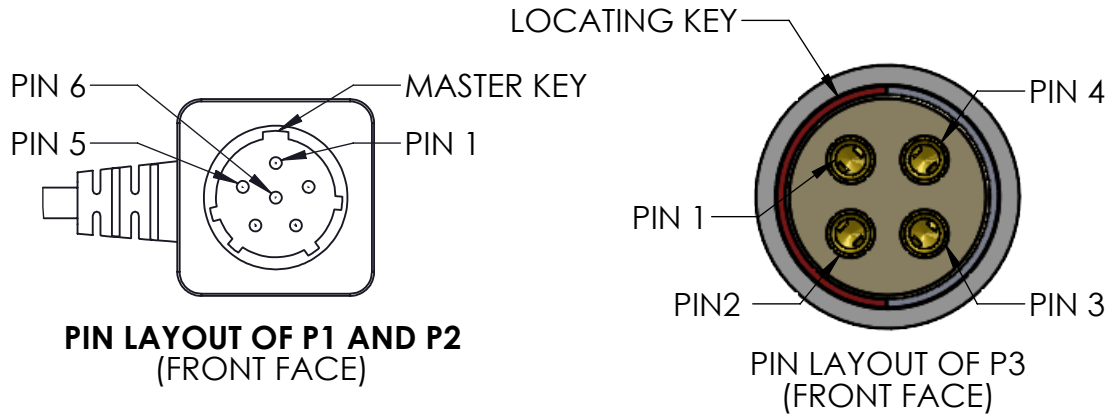
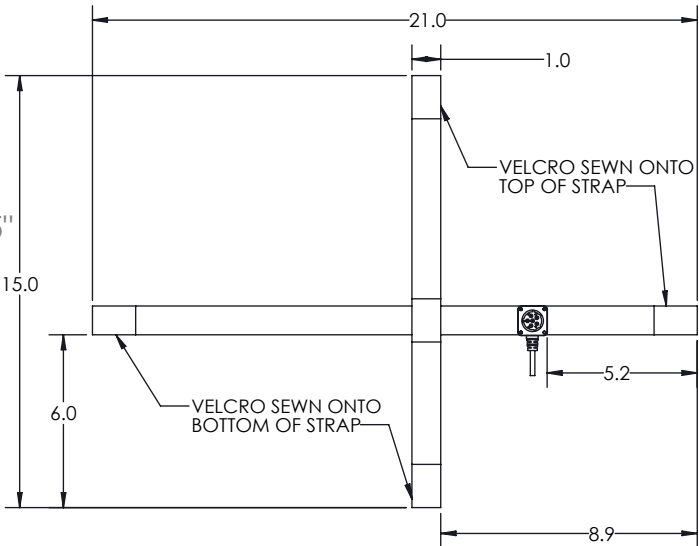
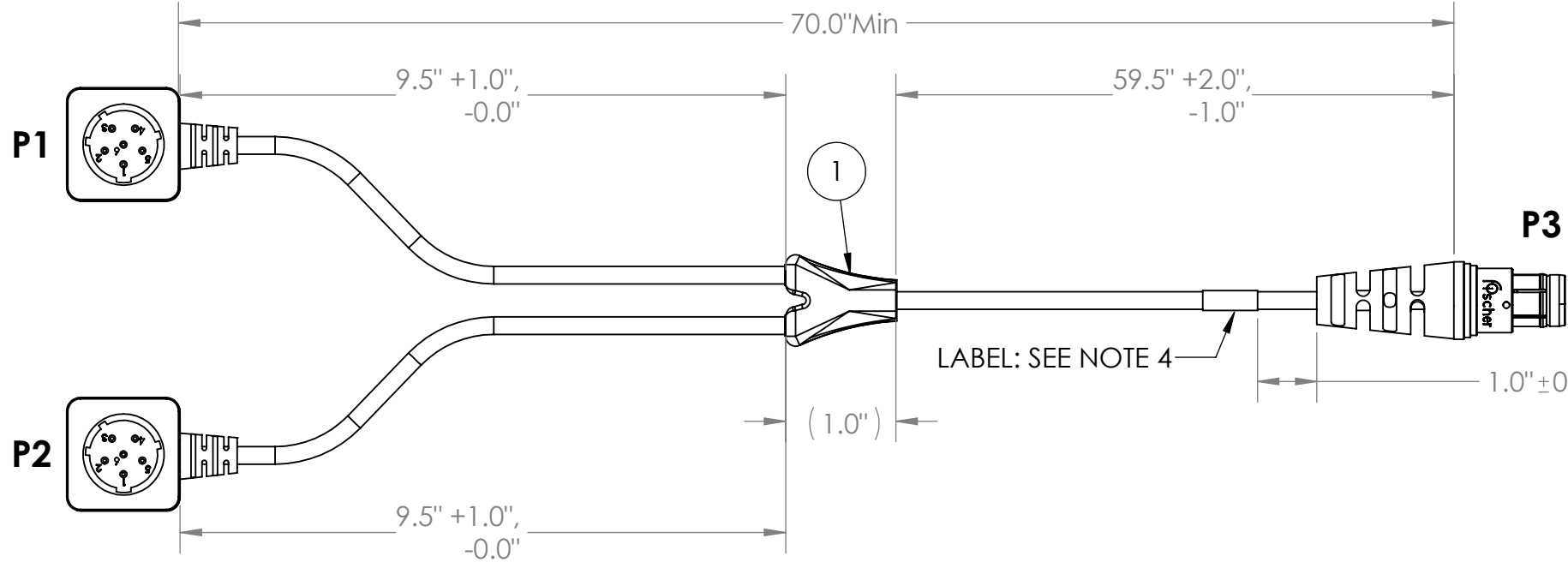
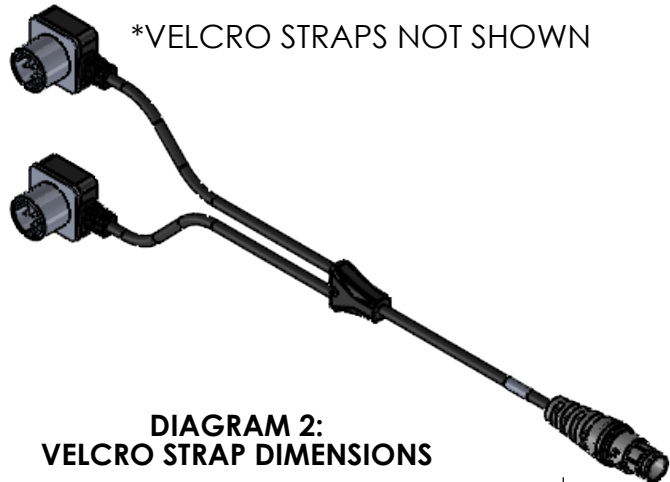


TABLE 1: WIRING				
P1	P2	WIRE COLORS		P3
		ITEM #3	ITEM #4	
5		RED	RED	1
	5	RED	WHITE	2
1		GREEN	BLACK	3
	1	GREEN	GREEN	4
2,4 (JUMPED)				
	2, 4 (JUMPED)			





REVISIONS			
REV.	DESCRIPTION	DATE	ENG
F	CHANGED ITEM NO. 1 PN, ADDED SHEET 2	12/21/2022	MOB
G	ADDED SUPPLIER CODES TO BOM, UPDATED DWG FORMAT, ADDED NOTE 6	7/18/2023	MOB



BILL OF MATERIALS			
ITEM NO.	PART NO.	QTY	NAME/DESCRIPTION
1	SN-333-VS2C1-06	1	DUAL BA5590 SPLITTER
2	SS-104-Z037-140	1	FISCHER 4 POS. CONNECTOR

- NOTES:
1. WIRING SHALL BE DONE IN ACCORDANCE WITH TABLE 1 WIRE RUN LIST.
 2. MARKING REQUIREMENTS:
 - A. LABELS SHALL BE MARKED IN ACCORDANCE WITH MIL-STD-130 AS APPLICABLE.
 - B. LABELS SHALL BE WHITE WITH BLACK TEXT.
 - C. LABELS SHALL BE PLACED WHERE SHOWN IN DRAWING.
 - D. ADHESIVE WRAP AROUND LABEL MAY BE USED.
 3. SOLDERING: IAW IPC-J-STD-001 CLASS 2 AS APPLICABLE
 4. ASSEMBLY TO BE 100% TESTED FOR SHORTS, CONTINUITY, AND JACKET RESISTANCE (250V @ 100MOHM MIN.)
 5. MANUFACTURE AND INSPECT IAW IPC/WHMA A-620 CLASS 2.
 6. MFG CODE: 011

UNLESS OTHERWISE SPECIFIED:		NAME	DATE	 		
DIMENSIONS ARE IN: INCHES TOLERANCES: .XX: ± 0.03 .XXX: ± 0.005 ANGULAR: .X°: 1° .XX°: 0.5° BREAK EDGES: .005 - .020 FILLET: .005 - .020 SURFACE FINISH: GEOMETRIC TOLERANCING PER: ASME Y14.5 -2009 MATERIAL: SEE DRAWING NOTES FINISH: SEE DRAWING NOTES DO NOT SCALE DRAWING	DRAWN	LS	3/21/2019	TITLE: DUAL BA5590 TO 4 PIN FISCHER, 24V, 70" LENGTH		
	CHECKED	RB	3/21/2019			
	COMMENTS:	<u>PROPRIETARY AND CONFIDENTIAL</u> THE INFORMATION CONTAINED IN THIS DRAWING IS THE SOLE PROPERTY OF SUPPLYNET, INC. ANY REPRODUCTION IN PART OR AS A WHOLE WITHOUT THE WRITTEN PERMISSION OF SUPPLYNET INC. IS PROHIBITED.		SIZE	DWG. NO.	REV
				B	SN-1229	G
		CAGE CODE: 1HJX9		SCALE: NA	WEIGHT:	SHEET 1 OF 1