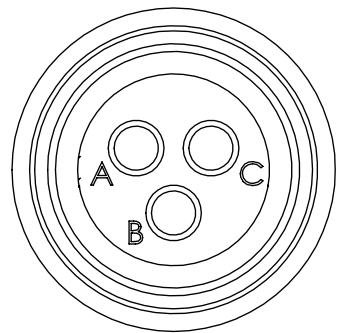
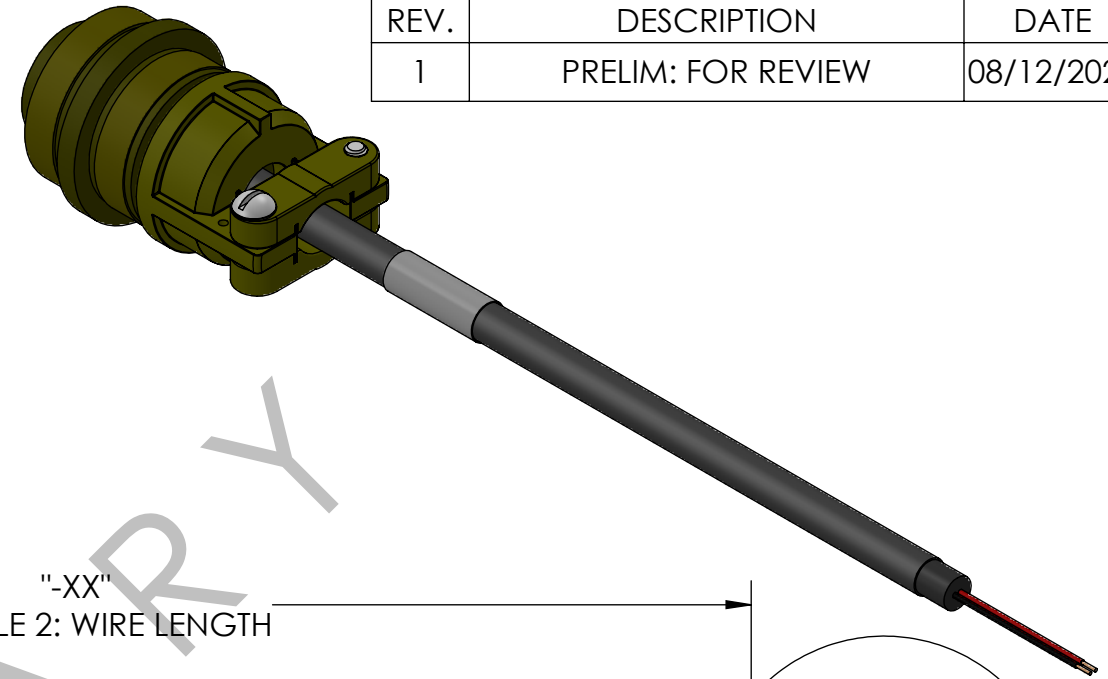


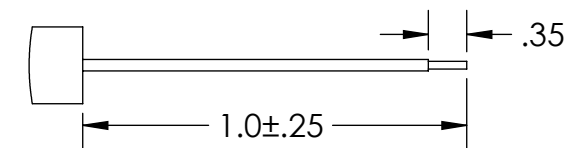
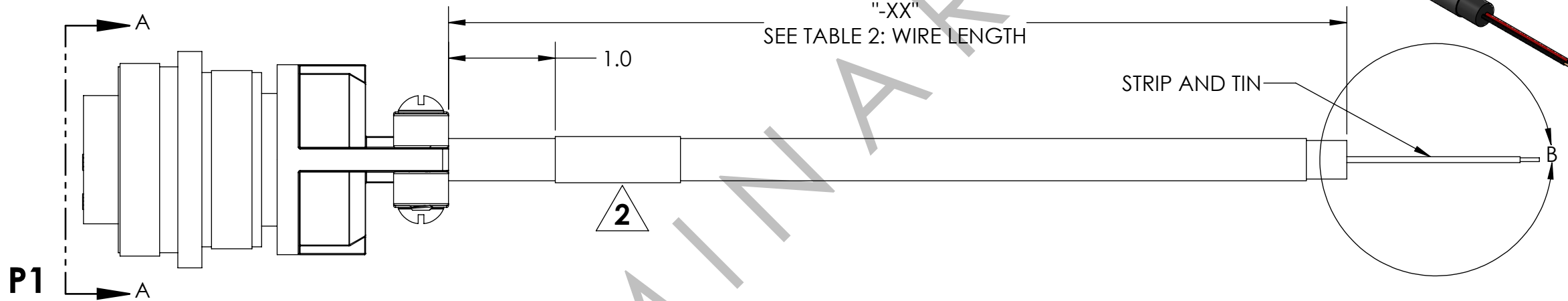
TABLE 1: WIRING		
P1 (MS3116F8-33S)	SIGNAL	WIRE COLORS
B	RTN	BLACK
C	+VDC	RED

TABLE 2: WIRE LENGTH TABLE		
"-XX" FROM P/N	"XX" DIMENSION (FT.)	TOLERANCE (INCHES)
-06	6	±4.0
-09	9	±4.0
-12	12	±4.0
-15	15	±5.0

REVISIONS			
REV.	DESCRIPTION	DATE	ENG
1	PRELIM: FOR REVIEW	08/12/2024	CWA



SECTION A-A
PIN LAYOUT P1
SCALE 1.5 : 1



DETAIL B
STRIP AND TIN
SCALE 2 : 1

NOTES:

- WIRING SHALL BE DONE IN ACCORDANCE WITH TABLE 1 WIRE RUN LIST.
- MARKING REQUIREMENTS:
 - LABEL(S) SHALL BE MARKED IN ACCORDANCE WITH MIL-STD-130 AS APPLICABLE.
 - LABEL(S) SHALL BE WHITE WITH BLACK TEXT.
 - LABEL(S) SHALL BE PLACED WHERE SHOWN IN DRAWING.
 - ADHESIVE WRAP AROUND LABEL(S) MAY BE USED.
 - LABEL SHALL BE MARKED WITH THE BELOW INFORMATION ONLY. REV MARKING PER PO.
(YYYY=YEAR OF MFG, MM=MONTH OF MFG, DD=DAY OF MFG, XXXX=PO NUMBER)
PN: SN-10535-0708-A0XX REV.X
CAGE: 1HJX9
LOT: TYYYYMMDDPXXXXX
- PACKAGING REQUIREMENTS:
 - EACH COMPLETED ASSEMBLY SHALL BE PACKAGED IN A ZIP POLYBAG.
 - CONNECTOR(S) SHALL BE PACKAGED TO PREVENT DAMAGE DURING SHIPPING. BUBBLE WRAP OR PROTECTIVE COVER MUST BE USED.
 - POLYBAG SHALL BE MARKED WITH SUPPLYNET LOGO, PRODUCT QR CODE, PART NUMBER, CAGE CODE, AND LOT NO, PER SN-STD-LBL REQUIREMENTS.
- WORKMANSHIP REQUIREMENTS:
 - MANUFACTURE TO IAW/WHMA A-620 CLASS 2 REQUIREMENTS.
 - SOLDERING SHALL BE COMPLIANT WITH IAW J-STD-001 AS APPLICABLE.
 - CONNECTOR(S) AND WIRE SHALL BE FREE FROM ANY SCRATCHES, CHIPS, AND DEFECTS.
- INSPECTION REQUIREMENTS:
 - EACH COMPLETED ASSEMBLY TO BE 100% TESTED FOR SHORTS, CONTINUITY, AND JACKET RESISTANCE (250V @100MOHM MIN.)
 - INSPECT TO IPC/WHMA A-620 CLASS 2 REQUIREMENTS.

UNLESS OTHERWISE SPECIFIED:		NAME	DATE	REF. NUMBER: SN1233
DIMENSIONS ARE IN: INCHES		DRAWN	CWA 08/12/2024	
TOLERANCES: .XX: ± 0.03 .XXX: ± 0.005		CHECKED	RB 08/12/2024	
ANGULAR: .X°: 1° .XX°: 0.5°		COMMENTS:		TITLE: MS3116F8-33S PIGTAIL CABLE Cross Ref: L3Harris 10535-0708-A009
BREAK EDGES: .005 - .020 FILLETS: .005 - .020 SURFACE FINISH:		<p>PROPRIETARY AND CONFIDENTIAL</p> <p>THE INFORMATION CONTAINED IN THIS DRAWING IS THE SOLE PROPERTY OF SUPPLYNET, INC. ANY REPRODUCTION IN PART OR AS A WHOLE WITHOUT THE WRITTEN PERMISSION OF SUPPLYNET INC. IS PROHIBITED.</p>		SIZE DWG. NO. REV
GEOMETRIC TOLERANCING PER: ASME Y14.5 -2009		CAGE CODE: 1HJX9		B SN-10535-0708-A0XX 1
MATERIAL: SEE DRAWING NOTES		SCALE: NA WEIGHT:		SHEET 1 OF 1
FINISH: SEE DRAWING NOTES		DO NOT SCALE DRAWING		