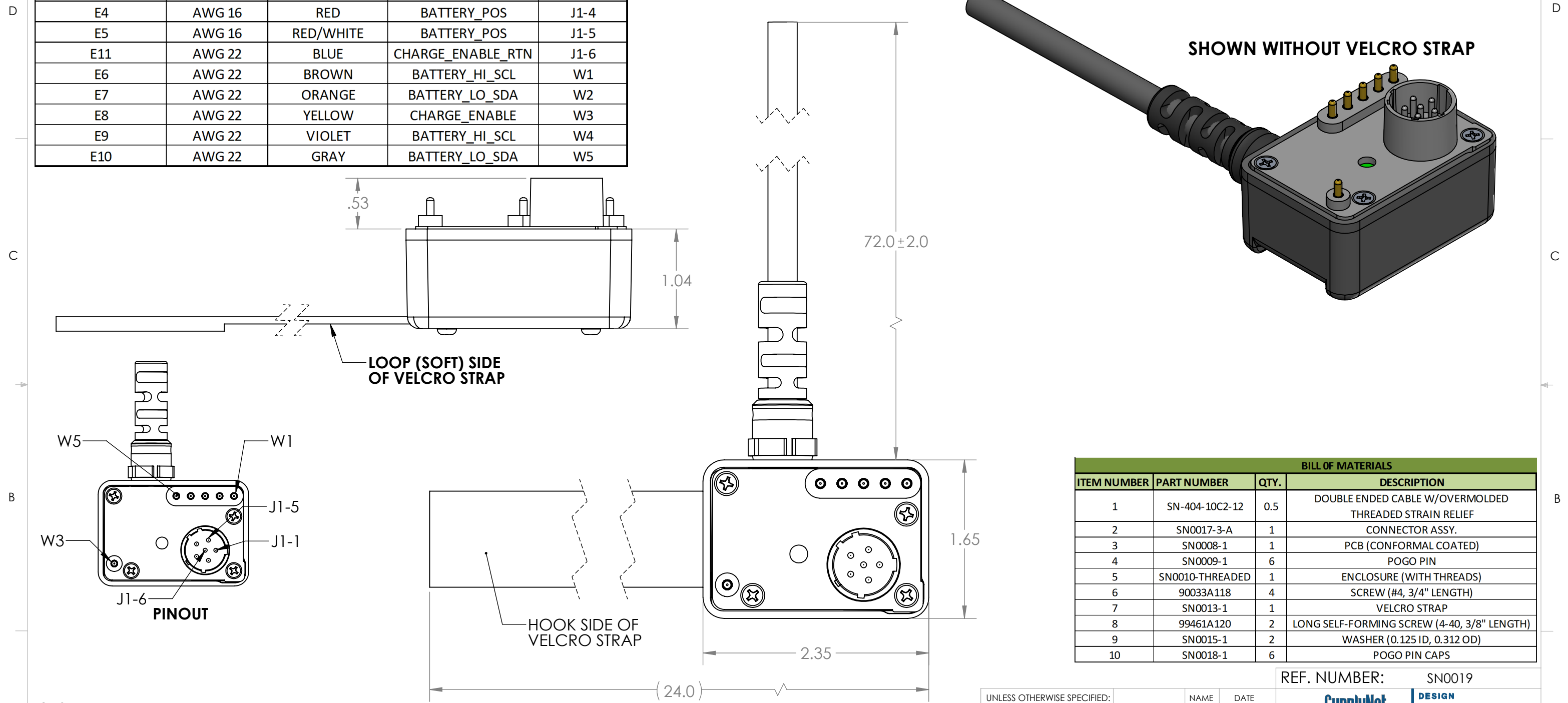


TABLE 1: WIRE RUN LIST				
PCB LOCATION	WIRE GAGE	WIRE COLOR	SIGNAL	CONN PIN
E1	AWG 16	BLACK	BATTERY_NEG	J1-1
E2	AWG 16	BLACK/WHITE	BATTERY_NEG	J1-2
E3	AWG 16	N/C	N/C	
E4	AWG 16	RED	BATTERY_POS	J1-4
E5	AWG 16	RED/WHITE	BATTERY_POS	J1-5
E11	AWG 22	BLUE	CHARGE_ENABLE_RTN	J1-6
E6	AWG 22	BROWN	BATTERY_HI_SCL	W1
E7	AWG 22	ORANGE	BATTERY_LO_SDA	W2
E8	AWG 22	YELLOW	CHARGE_ENABLE	W3
E9	AWG 22	VIOLET	BATTERY_HI_SCL	W4
E10	AWG 22	GRAY	BATTERY_LO_SDA	W5

REVISIONS			
REV	DESCRIPTION	DATE	ENG
O	ADDED PINOUT	09/15/2021	MM
P	UPDATED NOTES & BOM	03/13/2024	CWA



SHOWN WITHOUT VELCRO STRAP

BILL OF MATERIALS			
ITEM NUMBER	PART NUMBER	QTY.	DESCRIPTION
1	SN-404-10C2-12	0.5	DOUBLE ENDED CABLE W/OVERMOLDED THREADED STRAIN RELIEF
2	SN0017-3-A	1	CONNECTOR ASSY.
3	SN0008-1	1	PCB (CONFORMAL COATED)
4	SN0009-1	6	POGO PIN
5	SN0010-THREADED	1	ENCLOSURE (WITH THREADS)
6	90033A118	4	SCREW (#4, 3/4" LENGTH)
7	SN0013-1	1	VELCRO STRAP
8	99461A120	2	LONG SELF-FORMING SCREW (4-40, 3/8" LENGTH)
9	SN0015-1	2	WASHER (0.125 ID, 0.312 OD)
10	SN0018-1	6	POGO PIN CAPS

NOTES:

- WIRING SHALL BE DONE IN ACCORDANCE WITH TABLE 1 WIRE RUN LIST.
- PACKAGING REQUIREMENTS:
  - EACH COMPLETED ASSEMBLY SHALL BE PACKAGED IN A ZIP POLYBAG.
  - CONNECTOR(S) SHALL BE PACKAGED TO PREVENT DAMAGE DURING SHIPPING. BUBBLE WRAP OR PROTECTIVE COVER MUST BE USED.
  - POLYBAG SHALL BE MARKED WITH SUPPLYNET LOGO, PRODUCT QR CODE, PART NUMBER, CAGE CODE, AND LOT NO, PER SN-STD-LBL REQUIREMENTS.
- WORKMANSHIP REQUIREMENTS:
  - MANUFACTURE TO IAW/WHMA A-620 CLASS 2 REQUIREMENTS.
  - SOLDERING SHALL BE COMPLIANT WITH IAW J-STD-001 AS APPLICABLE.
  - CONNECTOR(S) AND WIRE SHALL BE FREE FROM ANY SCRATCHES, CHIPS, AND DEFECTS.
- INSPECTION REQUIREMENTS:
  - EACH COMPLETED ASSEMBLY TO BE 100% TESTED FOR SHORTS, CONTINUITY, AND JACKET RESISTANCE (250V @100MOHM MIN.)
  - INSPECT TO IPC/WHMA A-620 CLASS 2 REQUIREMENTS.

UNLESS OTHERWISE SPECIFIED:  
 DIMENSIONS ARE IN: INCHES  
 TOLERANCES: .XX: ± 0.03  
 .XXX: ± 0.005  
 ANGULAR: .X°: 1°  
 .XX°: 0.5°  
 BREAK EDGES: .005 - .020  
 FILLETS: .005 - .020  
 SURFACE FINISH:  
 GEOMETRIC TOLERANCING PER: ASME Y14.5-2009  
 MATERIAL: SEE DRAWING NOTES  
 FINISH: SEE DRAWING NOTES  
 DO NOT SCALE DRAWING

	NAME	DATE
DRAWN	RJB	05/05/14
CHECKED	RJB	05/05/14
COMMENTS:		

REF. NUMBER: SN0019

**SupplyNet** DESIGN ENGINEERING MANUFACTURING

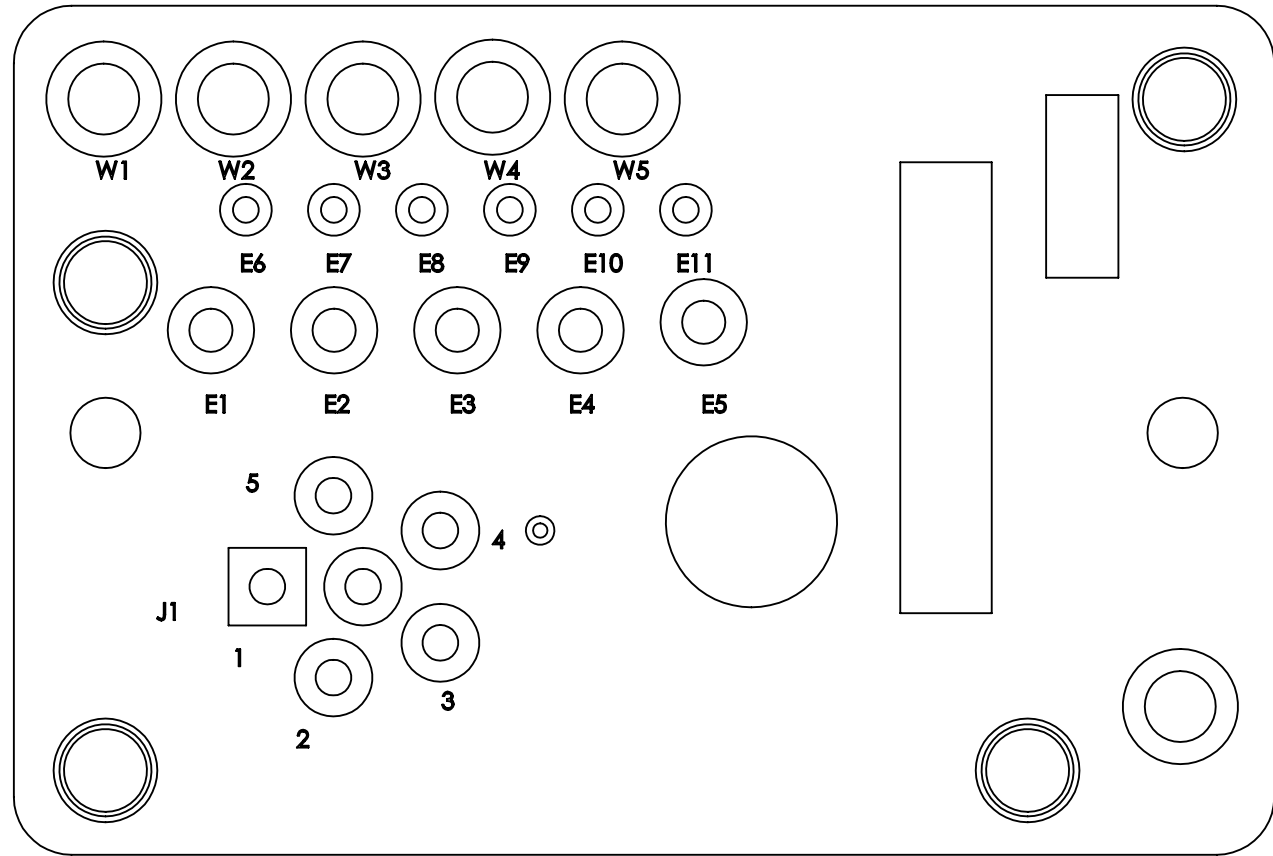
TITLE: **BB-2590 SMBUS POWER/DATA CABLE (ALL PINS WIRED)**

SIZE <b>B</b>	DWG. NO. CONN-BB2590SMBUS	REV <b>P</b>
---------------	---------------------------	--------------

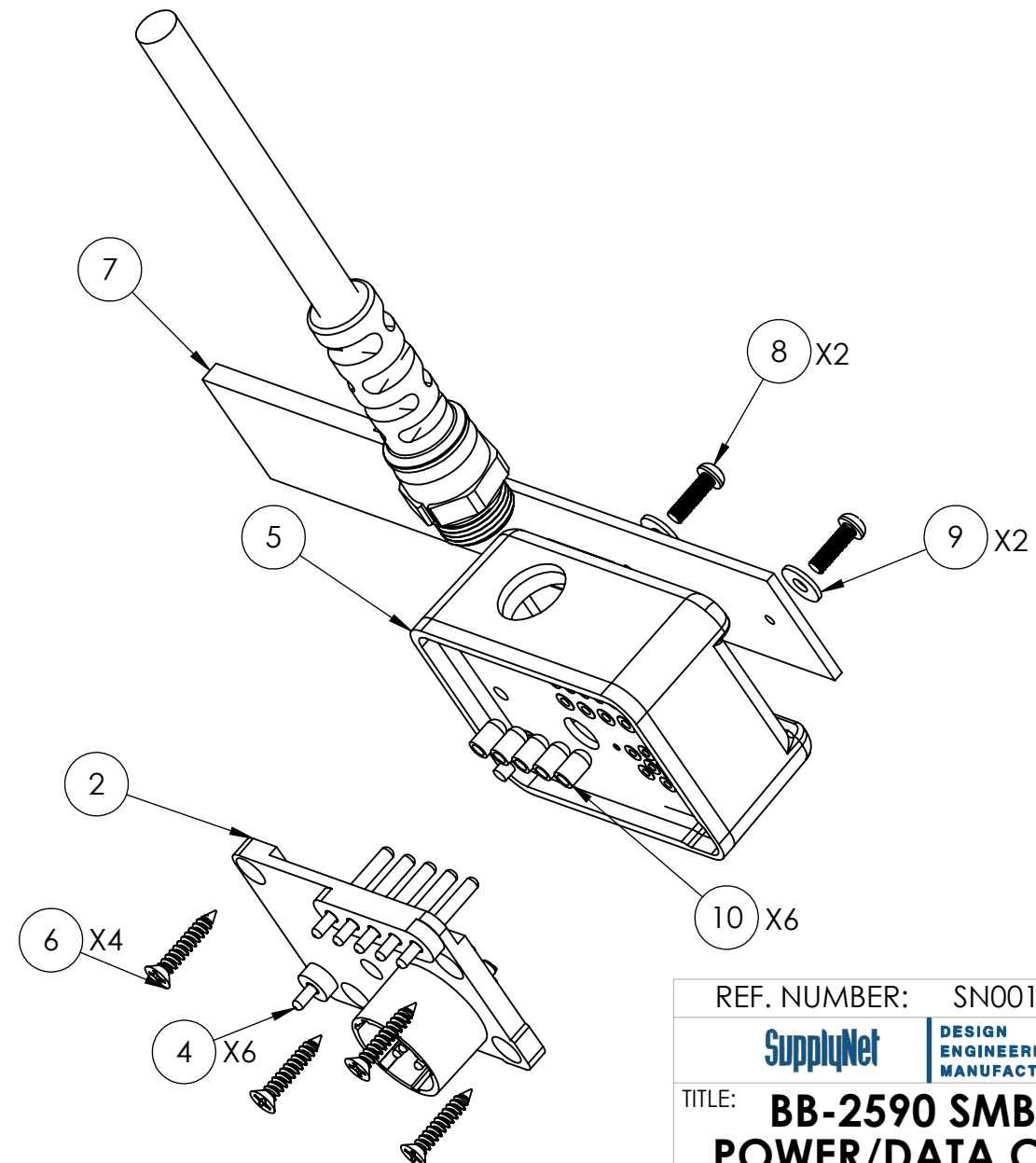
CAGE CODE: 1HJX9

SCALE: NA WEIGHT: SHEET 1 OF 2

### PCB DIAGRAM




### EXPLODED VIEW



#### ASSEMBLY NOTES:

1. APPLY CYANOACRYLATE TO THREADS OF ITEM #1 (CABLE) TO SECURE TO ITEM #5 (ENCLOSURE).

**PROPRIETARY AND CONFIDENTIAL**  
 THE INFORMATION CONTAINED IN THIS DRAWING IS THE SOLE PROPERTY OF SUPPLYNET, INC. ANY REPRODUCTION IN PART OR AS A WHOLE WITHOUT THE WRITTEN PERMISSION OF SUPPLYNET INC. IS PROHIBITED.  
**CAGE CODE: 1HJX9**

REF. NUMBER: SN0019		
		
TITLE: <b>BB-2590 SMBUS POWER/DATA CABLE (ALL PINS WIRED)</b>		
SIZE <b>B</b>	DWG. NO. CONN-BB2590SMBUS	REV <b>P</b>
SCALE: NA	WEIGHT:	SHEET 2 OF 2