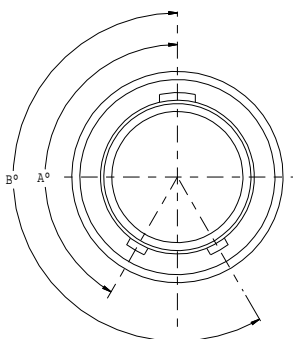


8070-1153

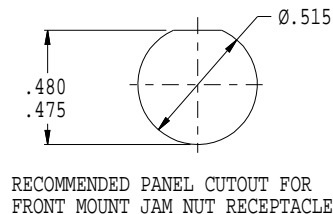
TABLE I		
CLASS	SHELL MATERIAL	FINISH DESCRIPTION
C	ALUMINUM	BLACK ANODIZE FINISH
M		ELECTROLESS NICKEL FINISH
NF		OLIVE DRAB CADMIUM OVER ELECTROLESS NICKEL FINISH
ZN		ZINC-NICKEL/O. D. OVER ELECTROLESS NICKEL
ZNU		BLACK ZINC-NICKEL OVER ELECTROLESS NICKEL
Z1	STAINLESS STEEL	PASSIVATE

TABLE II		
ALTERNATE KEY AND KEYWAY POSITION		
POSITION	A°	B°
A	150°	210°
B	75°	210°
C	95°	230°
D	140°	275°

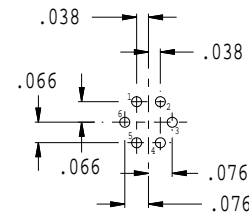


NORMAL AND ALTERNATE POSITION  
KEY ROTATION

REVISIONS			
SYM.	DESCRIPTION	DATE	APPROVED
A	RELEASED	05/19/16	SDS

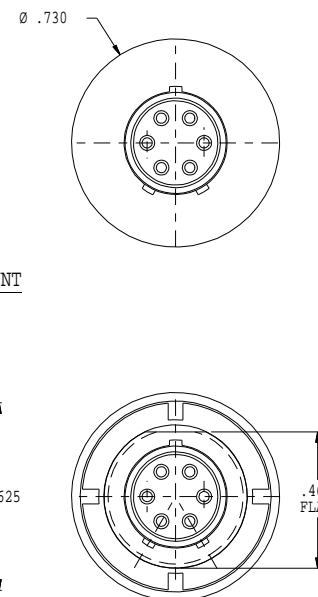
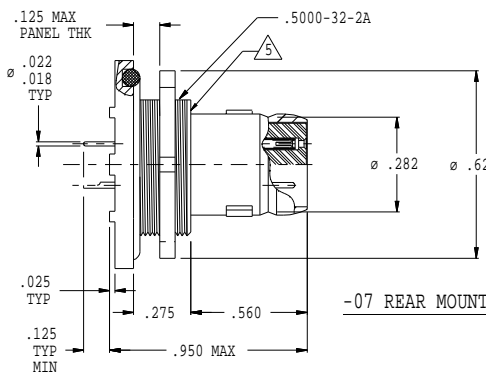
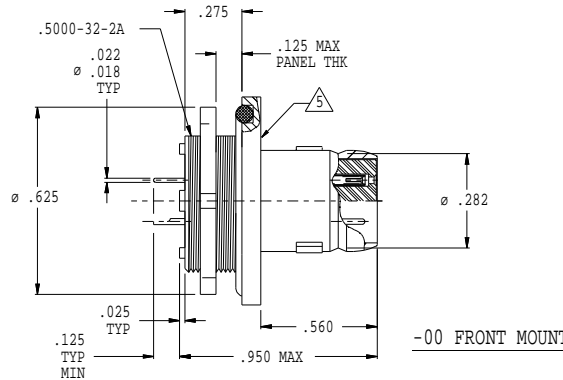
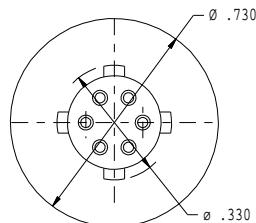
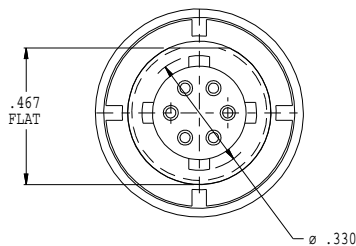
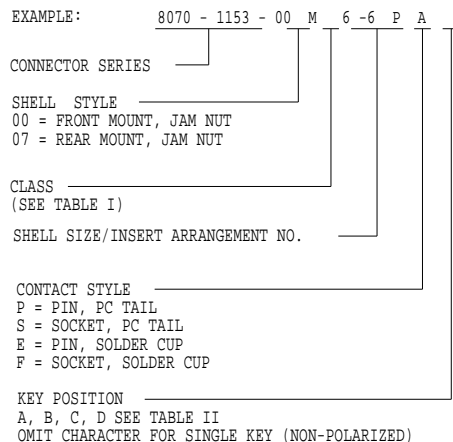


RECOMMENDED PANEL CUTOUT FOR  
FRONT MOUNT JAM NUT RECEPTACLE



ARRANGEMENT NO. 6-6  
6 #23 CONTACTS

PART NUMBER DEVELOPMENT



- THIS CONNECTOR IS ENVIRONMENTALLY SEALED TO MEET A HELIUM LEAK DETECTION LEVEL OF LESS THAN 10<sup>-4</sup> CC/SEC AT ONE ATMOSPHERE DELTA P.
- CONTACT PIN IN POSITION 2 IS FIRST TO MAKE/LAST TO BREAK ELECTRICAL CONTACT.
- RED STRIPE INDICATOR FOR ALIGNMENT DURING MATING.
- THIS CONNECTOR, PLUG MATES WITH RECEPTACLE 807-216.
- THE CONTACTS ARE SIZE 23 PC TAIL TYPE, AND ARE USED IN A FIXED CONTACT SYSTEM.
- MATERIAL / FINISH:  
SHELL - AL ALLOY OR CRES/SEE TABLE I.  
INSULATORS - LIQUID CRYSTAL POLYMER/N.A.  
INTERFACIAL SEAL, O-RING - FLUOROSILICONE.  
CONTACT - COPPER ALLOY / GOLD PLATE PER ASTM B 488, TYPE II CLASS 1.25 (.00005 MIN THK), OVER A SUITABLE UNDERPLATE.  
POTTING COMPOUND - RTV
- ASSEMBLY TO BE IDENTIFIED WITH GLENNAIR'S NAME PART NUMBER AND DATE CODE SPACE PERMITTING.

NOTES: UNLESS OTHERWISE SPECIFIED

GENERAL DYNAMICS C4S.  
NO CHANGES PERMITTED  
UNLESS APPROVED BY GDC4S  
(REF: GDC4S LW APPLICATION)

UNLESS OTHERWISE SPECIFIED	DRAWN	SDS	02/17/10
DIMENSIONS ARE IN INCHES	CHECK		
TOLERANCES:	ENGR	SDS	02/17/10
FRACTIONS ± 1/16	<i>D. Brown</i> APPROVED		
DECIMALS .XX ± .030			
.XXX ± .015			
ANGLES ± 1°	APPROVED		
DO NOT SCALE THIS DRAWING	RELEASE DATE		
B/F 06C6793	P/C 804	ORIGINAL RELEASE DATE	
	NON REPARABLE COMMERCIAL ITEM		

**GLENNAIR, INC.** CAD 1997

1211 AIR WAY - GLENDALE - CALIFORNIA 91201

CONNECTOR PLUG, PUSH/PULL,  
ENVIRONMENTAL  
WITH #23 GA PC TAIL CONTACTS  
SHELL SIZE 6-6

CODE IDENT. NO.	SIZE	8070-1153	REV.
06324	C		A
SCALE	N/A	WEIGHT	N/A
SHEET	1 OF 1		

THIS COPYRIGHTED DOCUMENT IS THE PROPERTY OF GLENNAIR, INC. AND IS FURNISHED ON THE CONDITION THAT IT IS NOT TO BE DISCLOSED, REPRODUCED IN WHOLE OR IN PART, OR USED TO SOLICIT QUOTATIONS FROM COMPETITIVE SOURCES, OR USED FOR MANUFACTURE BY ANYONE OTHER THAN GLENNAIR, INC. WITHOUT WRITTEN PERMISSION FROM GLENNAIR, INC. THE INFORMATION HEREIN HAS BEEN DEVELOPED AT GLENNAIR'S EXPENSE AND MAY BE USED FOR ENGINEERING EVALUATION AND INCORPORATION INTO TECHNICAL SPECIFICATIONS AND OTHER DOCUMENTS WHICH SPECIFY PROCUREMENT OF PRODUCTS FROM GLENNAIR, INC.