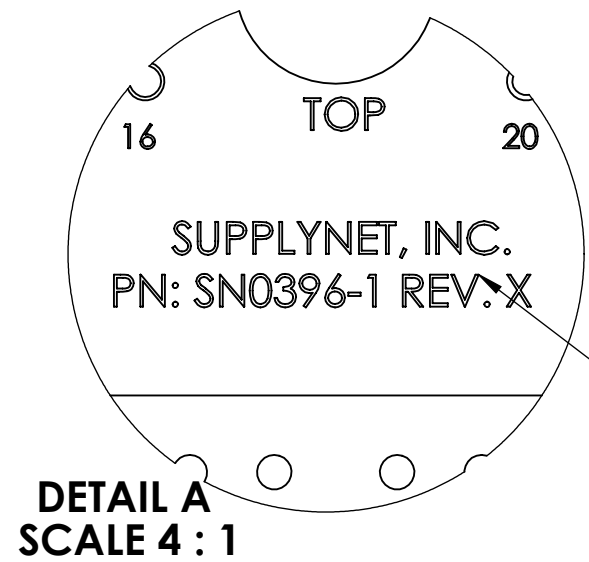
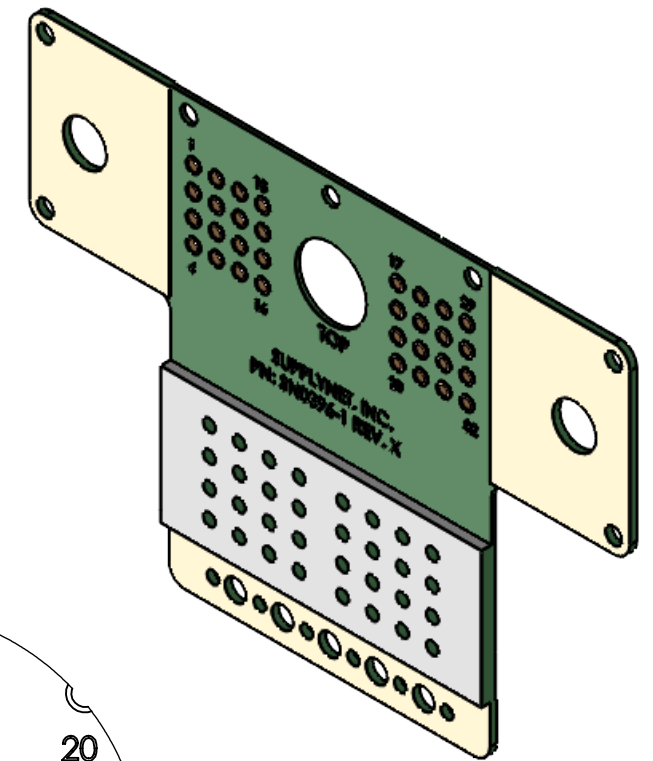
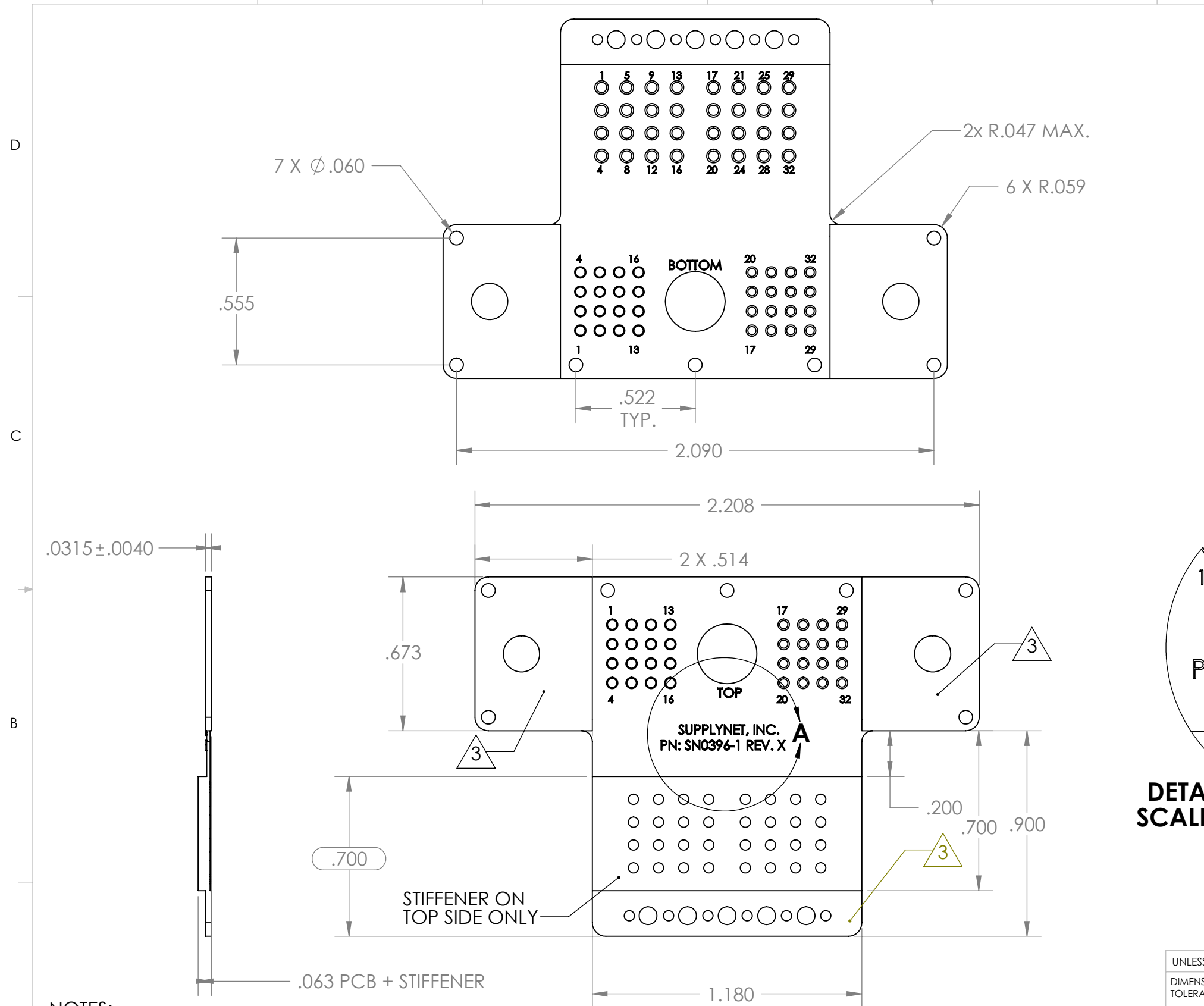


REVISIONS			
REV.	DESCRIPTION	DATE	ENG
A	REVISED. SEE DCN SN0196E	04/23/15	TC
B	CLEANED UP DIMS, CHANGED PCB THICKNESS	11/9/2022	MOB



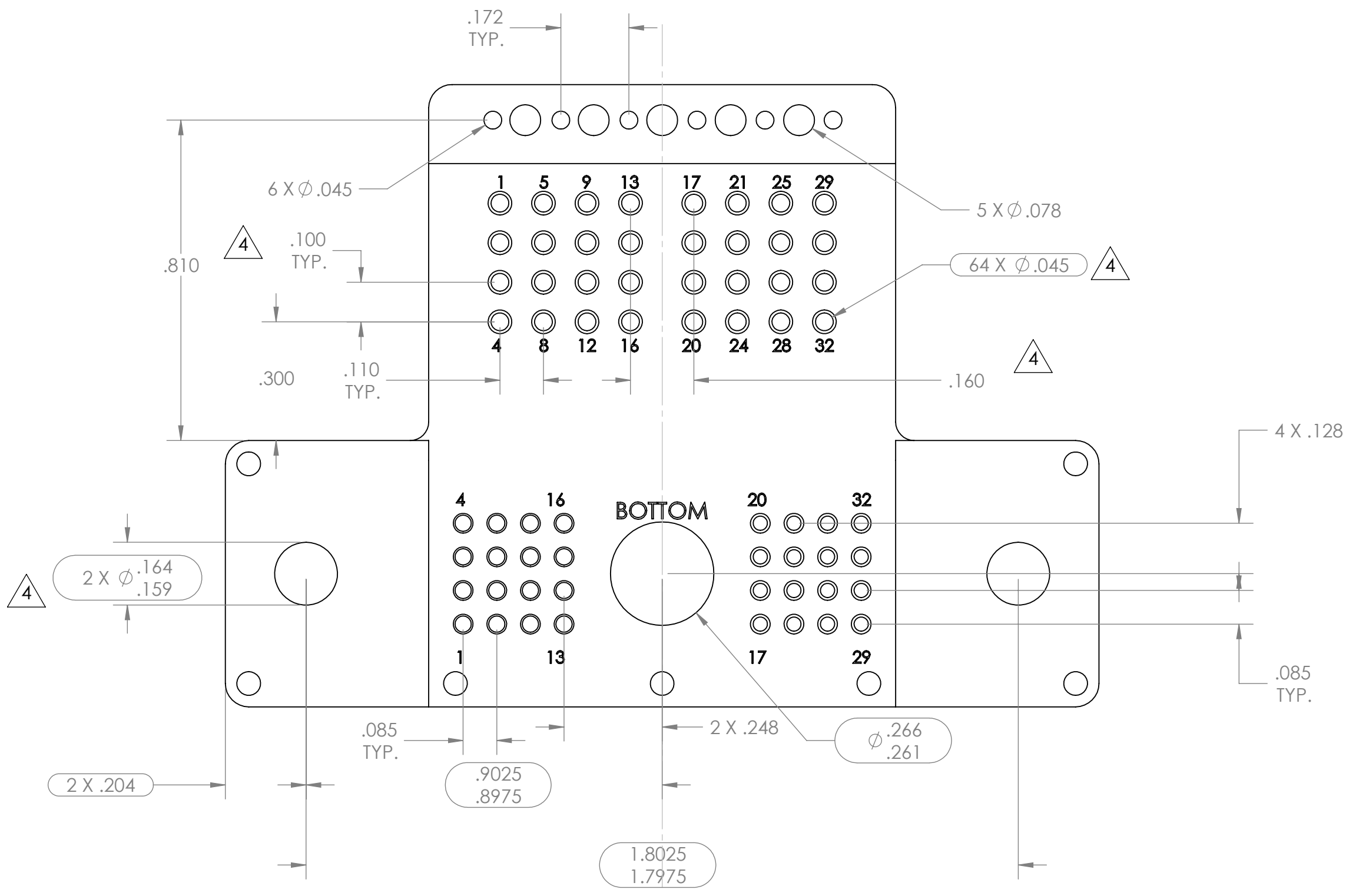
TO BE MARKED WITH CURRENT REV OF DRAWING PO WAS ISSUED FOR.

- NOTES:
- 1) SHEET 2 HAS ENLARGED VIEW FOR PIN FUNCTION AND IDENTIFICATION CLARITY.
 - 2) DIMENSIONAL POSITION OF SOLDER LOCATIONS PROVIDED ON SHEET 2.
 - 3) GROUND PLANE ON BOTH SIDES.
 - 4) PLATED THRU.
 - 5) STIFFENER SIDES TO BE FLUSH WITH PCB.

UNLESS OTHERWISE SPECIFIED:		NAME	DATE	 706 EXECUTIVE BLVD. SUITE B VALLEY COTTAGE, NY 10989
DIMENSIONS ARE IN: INCHES		DRAWN	TC	
TOLERANCES: .XX: \pm 0.03		CHECKED	RJB	TITLE:
.XXX: \pm 0.005		COMMENTS:		<h1>REAR EXIT PCB</h1>
ANGULAR: .X°: 1°		<p>PROPRIETARY AND CONFIDENTIAL</p> <p>THE INFORMATION CONTAINED IN THIS DRAWING IS THE SOLE PROPERTY OF SUPPLYNET, INC. ANY REPRODUCTION IN PART OR AS A WHOLE WITHOUT THE WRITTEN PERMISSION OF SUPPLYNET INC. IS PROHIBITED.</p>		
BREAK EDGES: .005 - .020		SIZE	DWG. NO.	REV
FILLET: .005 - .020		B	SN0396	B
SURFACE FINISH:		SCALE: NA	WEIGHT:	SHEET 1 OF 2
GEOMETRIC TOLERANCING PER: ASME Y14.5-2009		CAGE CODE: 1HJX9		
MATERIAL: SEE DRAWING NOTES				
FINISH: SEE DRAWING NOTES				
DO NOT SCALE DRAWING				

8 7 6 5 4 3 2 1

D C B A



PROPRIETARY AND CONFIDENTIAL
 THE INFORMATION CONTAINED IN THIS DRAWING IS THE SOLE PROPERTY OF SUPPLYNET, INC. ANY REPRODUCTION IN PART OR AS A WHOLE WITHOUT THE WRITTEN PERMISSION OF SUPPLYNET INC. IS PROHIBITED.

PART NUMBER: SN0396		
SupplyNet 706 EXECUTIVE BLVD. SUITE B VALLEY COTTAGE, NY 10989		
TITLE: REAR EXIT PCB		
SIZE B	DWG. NO. SN0396	REV B
SCALE: NA	WEIGHT:	SHEET 2 OF 2

8 7 6 5 4 3 2 1