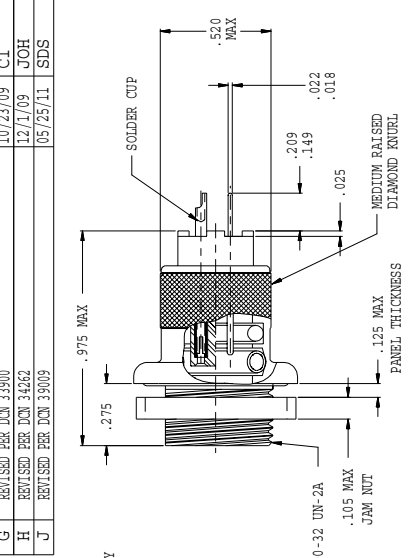
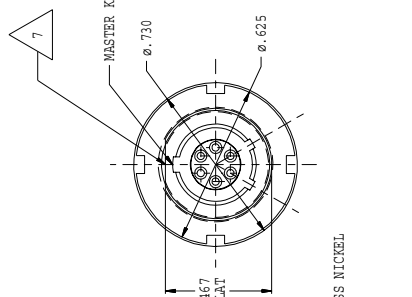


807-216

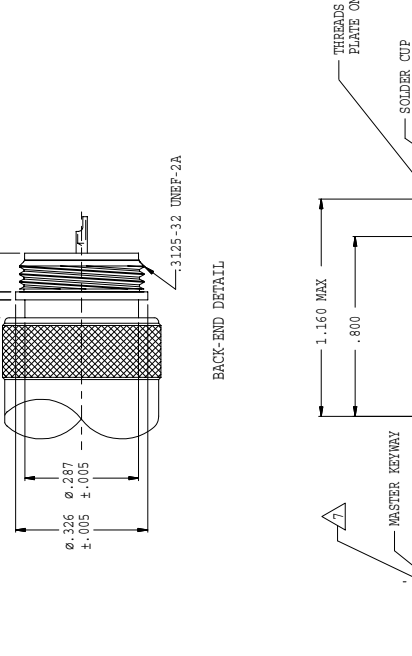
REVISIONS		
SYM.	DESCRIPTION	DATE APPROVED
A	RELEASED	05/17/05 JLIT
D	REVISED PER DCM 46273, ADDED COPYRIGHT STATEMENT	04/01/08 ACM
E	REVISED PER DCM 31388	01/20/09 GSB
F	REVISED PER DCM 32303	4/30/09 CI
G	REVISED PER DCM 33900	10/23/09 CI
H	REVISED PER DCM 34562	12/1/09 JOH
J	REVISED PER DCM 39009	05/25/11 SDS



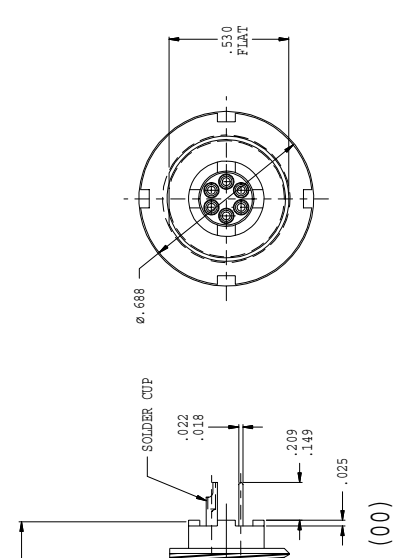
REAR MOUNT STYLE (07)



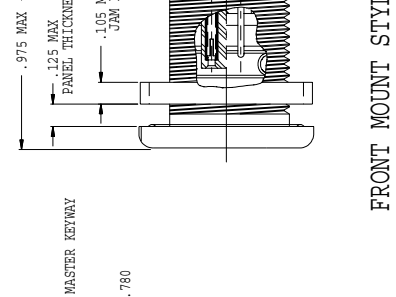
FRONT MOUNT STYLE (00)



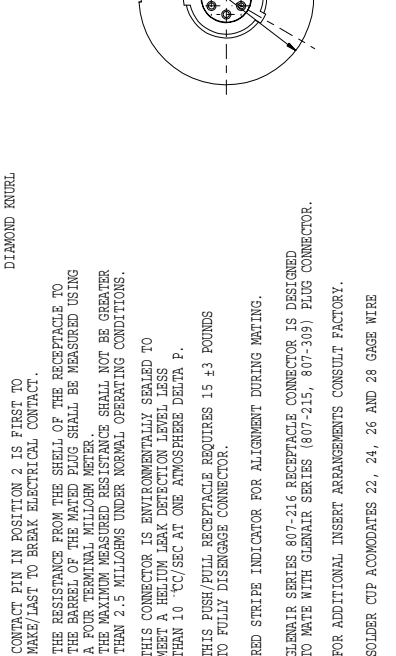
IN-LINE STYLE (01)



BACK-END DETAIL



MATING FACE VIEW OF RECEPTACLE ARRANGEMENT 6-6 PIN FACE SHOWN (SOCKET FACE OPPOSITE)



11. CONTACT PIN IN POSITION 2 IS FIRST TO MAKE/BREAK TO BREAK ELECTRICAL CONTACT.

10. THE RESISTANCE FROM THE SHELL OF THE RECEPTACLE TO THE BARREL OF THE MATED PLUG SHALL BE MEASURED USING A FOUR TERMINAL MILLIOM METER. THE MAXIMUM MEASURED RESISTANCE SHALL NOT BE GREATER THAN 2.5 MILLIOMHS UNDER NORMAL OPERATING CONDITIONS.

9. THIS CONNECTOR IS ENVIRONMENTALLY SEALED TO MEET A HELIUM LEAK DETECTION LEVEL LESS THAN 10⁻⁶ CC/SEC AT ONE ATMOSPHERE DELTA P. THIS PUSH/PULL RECEPTACLE REQUIRES 15 ± 3 POUNDS TO FULLY DISENGAGE CONNECTOR.

8. THIS PUSH/PULL RECEPTACLE REQUIRES 15 ± 3 POUNDS TO FULLY DISENGAGE CONNECTOR.

7. RED STRIPE INDICATOR FOR ALIGNMENT DURING MATING.

6. GLENAIR SERIES 807-216 RECEPTACLE CONNECTOR IS DESIGNED TO MATE WITH GLENAIR SERIES (807-215, 807-308) PUGS CONNECTOR.

5. FOR ADDITIONAL INSERT ARRANGEMENTS CONSULT FACTORY.

4. SOLDER CUP ACCOMMODATES 22, 24, 26 AND 28 GAGE WIRE

3. THE CONTACTS ARE SIZE 23 SOLDER CUP OR FC TAIL AND ARE FIXED (FOTTED) IN PLACE.

2. MATERIAL / FINISH:
 ON OD ONLY THREADS BLACK CHROMATE OVER ZINC NICKEL PLATE, INSULATORS - LIQUID CRYSTAL POLYMER/N.A.
 O-RING- FLUOROSILICONE.
 CONTACT - COPPER ALLOY/ GOLD PLATE PER ASTM B 488, TYPE II, CODE C, CLASS 1.25 (.00005 MIN THK), OVER A SUITABLE UNDERPLATE.
 DETENT SPRING - BERYLLIUM COPPER/GOLD PLATED FILLER - RTV ADAPTER - AL ALLOY/ELECTROLESS NICKEL.

1. ASSEMBLY TO BE BAG AND TAG WITH GLENAIR'S NAME PART NUMBER AND DATE CODE

NOTES: UNLESS OTHERWISE SPECIFIED

THIS DOCUMENT IS THE PROPERTY OF GLENAIR, INC. AND IS FURNISHED ON THE CONDITION THAT IT IS NOT TO BE REPRODUCED, REPRODUCED IN WHOLE OR IN PART, OR USED TO SOLICIT QUOTATIONS FROM COMPETITIVE SOURCES OR USED FOR MANUFACTURE BY ANYONE OTHER THAN GLENAIR, INC. WITHOUT WRITTEN PERMISSION FROM GLENAIR, INC. THE INFORMATION HEREIN HAS BEEN DEVELOPED AT GLENAIR'S EXPENSE AND MAY BE USED FOR ENGINEERING, REPRODUCTION AND REPRODUCTION INTO TECHNICAL SPECIFICATIONS AND OTHER DOCUMENTS WHICH SPECIFY REPRODUCTION OF PRODUCTS FROM GLENAIR, INC.

UNLESS OTHERWISE SPECIFIED DIMENSIONS ARE IN INCHES

TOLERANCES:
 FRACTIONS ± 1/16
 DECIMALS .XX ± .030
 .XXX ± .015
 ANGLES ± 1°

DO NOT SCALE THIS DRAWING

B/F P/C 800

NON REPAIRABLE COMMERCIAL ITEM

SCALE N/A WEIGHT N/A SHEET 1 OF 2

CODE IDENT. NO. 06324 SIZE C

DATE 07/19/04

DRAWN JLIT CHECK ENGR JLIT

APPROVED: *g. brown*
 APPROVED: *D. Brown*

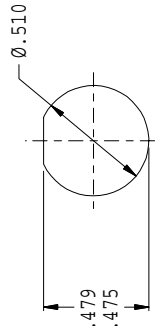
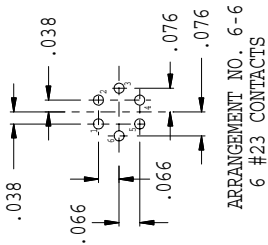
1211 AIR WAY - GLENDALE - CALIFORNIA 91201

GLENAIR, INC.

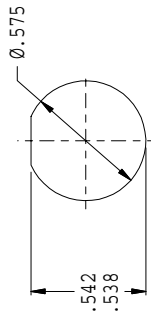
CONNECTOR RECEPTACLE, PUSH/PULL TYPE.
 #23 CONTACTS, FC TAIL/SOLDER CUP,
 SHELL SIZE 6, 15 LB PULL OUT

REV J
 807-216

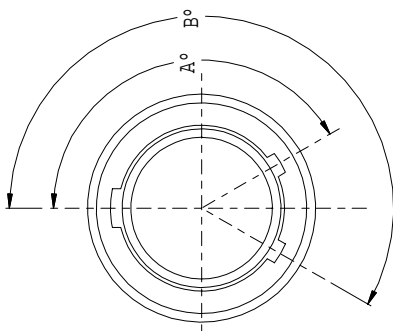
TABLE I		REVISIONS	
ALTERNATE KEY AND KEYWAY POSITION		SYM.	DESCRIPTION
POSITION	A° B°	DATE	APPROVED
N	150° 210°		
X	75° 210°		
Y	95° 230°	SEE SHEET 1	
Z	140° 275°		



RECOMMENDED PANEL CUTOUT FOR REAR MOUNT JAM NUT RECEPTACLE



RECOMMENDED PANEL CUTOUT FOR FRONT MOUNT JAM NUT RECEPTACLE



NORMAL AND ALTERNATE POSITION KEY VIEW OF RECEPTACLE AS VIEWED FROM ENGAGING END

807-216-07ZNU6-6SY

PART NUMBER DEVELOPMENT

EXAMPLE: **807-216** - 07 ZNU 6-6 S N B

CONNECTOR SERIES

SHELL STYLE
00 = JAM NUT RECEPTACLE, FRONT MOUNT
01 = IN-LINE RECEPTACLE
07 = JAM NUT RECEPTACLE, REAR MOUNT.

CLASS

6-6

SHELL SIZE/INSERT ARRANGEMENT NO.

CONTACT STYLE

S = SOCKET, SOLDER CUP
D = SOCKET, PC TAIL
P = PIN, SOLDER CUP
C = PIN, PC TAIL

KEY POSITION (SEE TABLE I)

N = NORMAL
Y = POSITION Y
Y = POSITION Y
Z = POSITION Z

ADAPTER

B = MOLDING, BANDING ADAPTER (FOR 01 SHELL STYLE ONLY)
(REF: 809-025; OMIT FOR NONE)

THIS DOCUMENT IS THE PROPERTY OF GLENAIR, INC. AND IS FURNISHED ON THE CONDITION THAT IT IS NOT TO BE REPRODUCED, REPHOTOCOPIED, WHOLE OR IN PART, OR USED TO SOLICIT QUOTATIONS FROM COMPETITIVE SOURCES OR USED FOR MANUFACTURE BY ANYONE OTHER THAN GLENAIR, INC. WITHOUT WRITTEN PERMISSION FROM GLENAIR, INC. THE INFORMATION HEREIN HAS BEEN DEVELOPED AT GLENAIR'S EXPENSE AND MAY BE USED FOR ENGINEERING EVALUATION AND INCORPORATION INTO TECHNICAL SPECIFICATIONS AND OTHER DOCUMENTS WHICH SPECIFY PROCUREMENT OF PRODUCTS FROM GLENAIR, INC.

UNLESS OTHERWISE SPECIFIED	07/19/04	CAD 1997	
DRAWN	JIT		
CHECK	JIT		
ENGR	JIT	1211 AIR WAY - GLENDALE - CALIFORNIA 91201	
DIMENSIONS ARE IN INCHES			
TOLERANCES:			
FRACTIONS	+ 1/16		
DECIMALS	.XX ±.010		
ANGLES	.XXX ±.005		
DO NOT SCALE THIS DRAWING			
B/F 3376	P/C 800		
NON REPAIRABLE COMMERCIAL ITEM		SCALE	N/A
		WEIGHT	N/A
		SHEET	2 OF 2
RELEASE DATE		CODE IDENT. NO.	
ORIGINAL		06324	
SUBSEDATE		SIZE	C
		807-216	
CONNECTOR RECEPTACLE, PUSH/PULL TYPE. #23 CONTACTS, PC TAIL/SOLDER CUP, SHELL SIZE 6, 15 LB PULL OUT			

GLENAIR, INC.

CONNECTOR RECEPTACLE, PUSH/PULL TYPE.
#23 CONTACTS, PC TAIL/SOLDER CUP,
SHELL SIZE 6, 15 LB PULL OUT