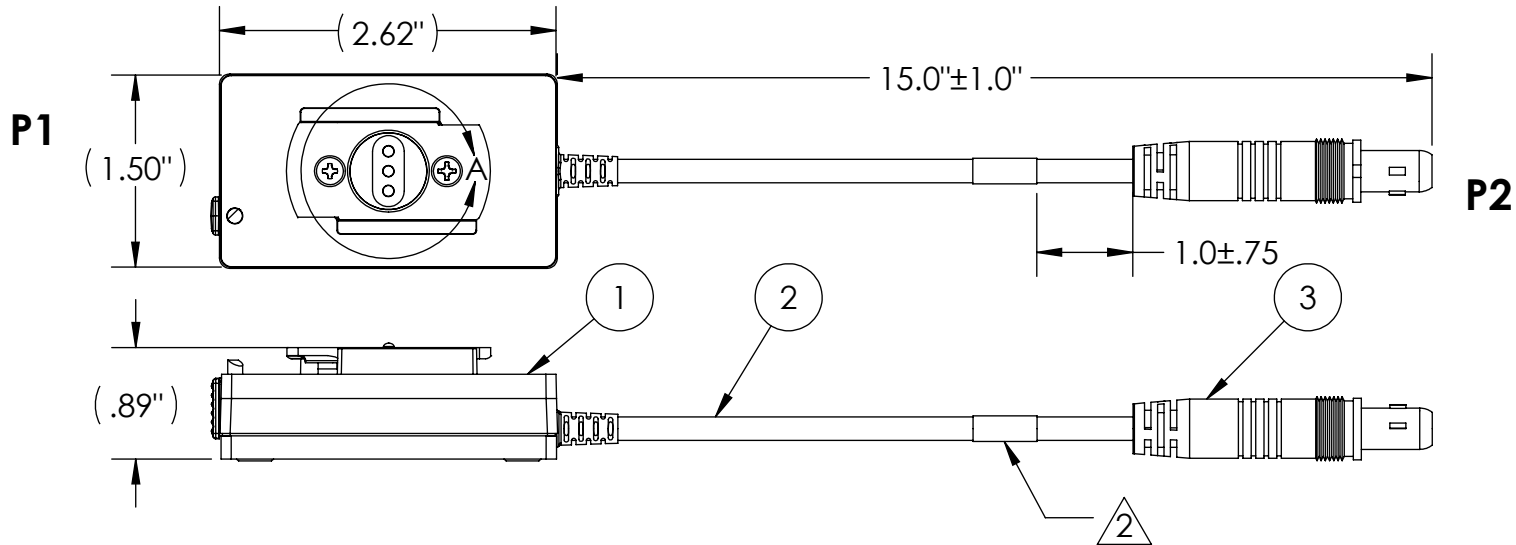
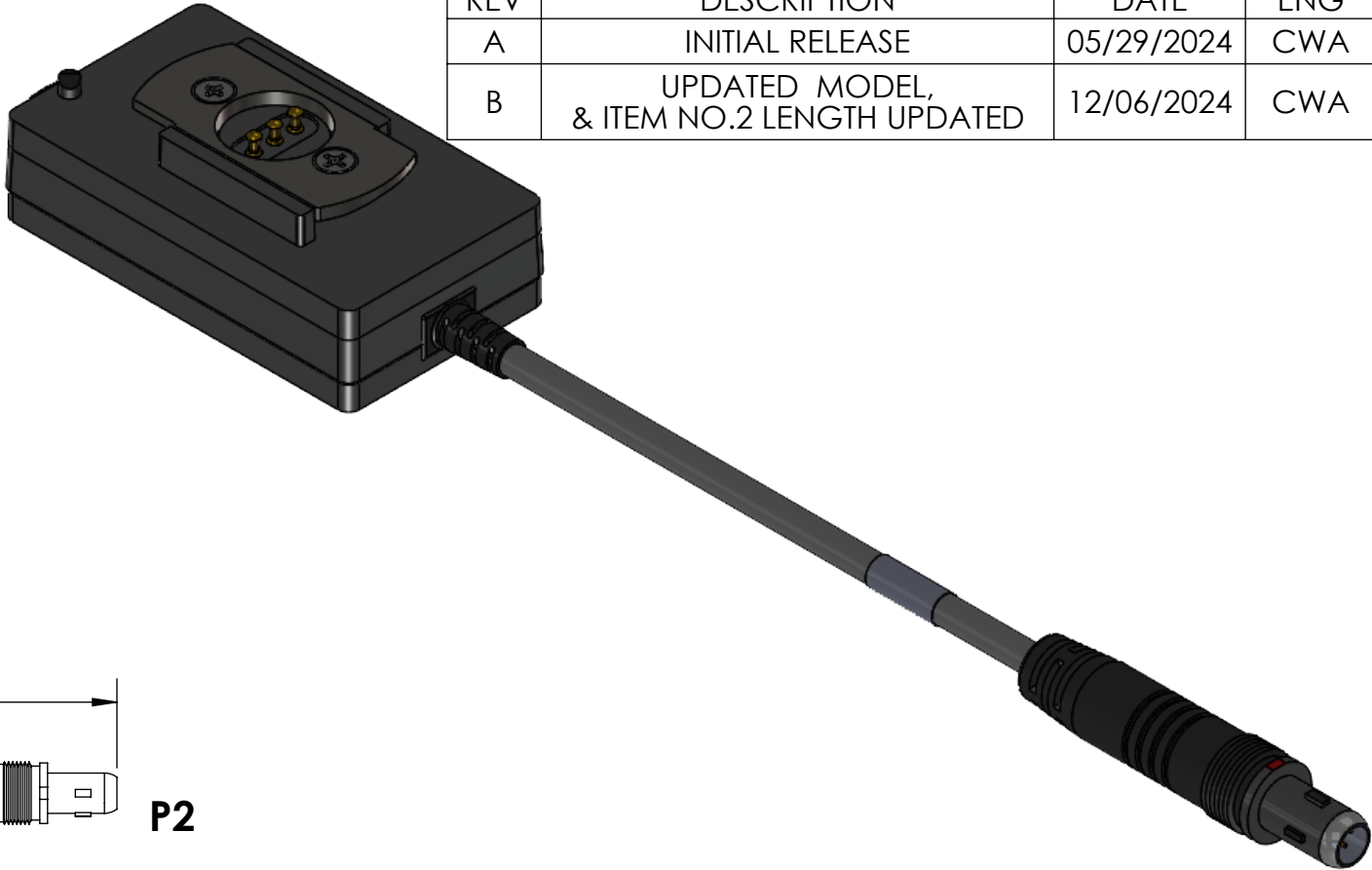
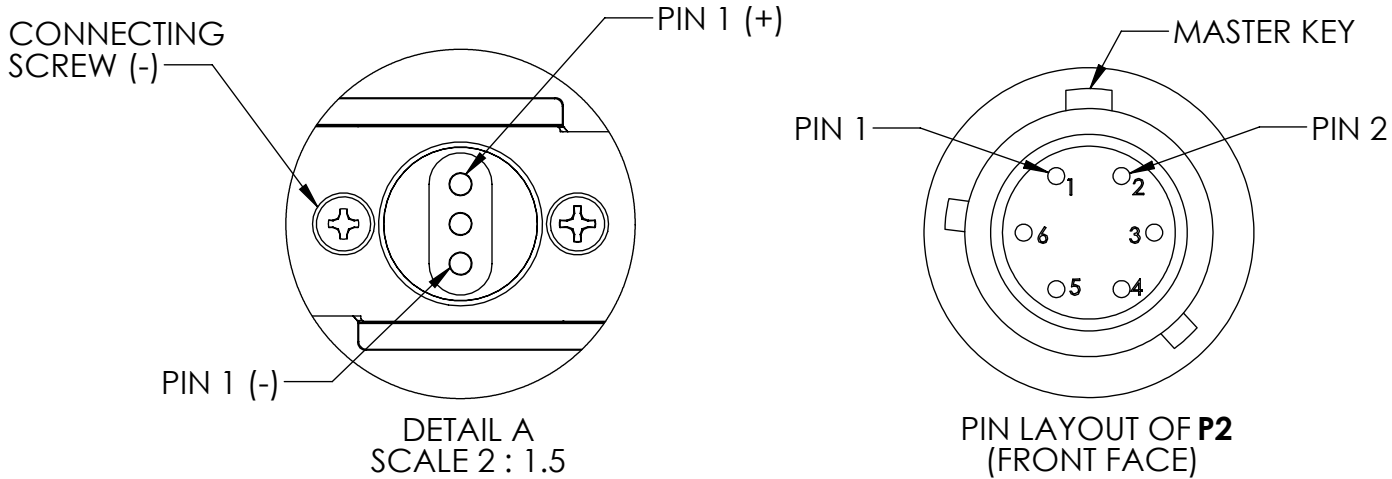


TABLE 1: WIRE RUN LIST		
P1 (ITEM 1)	COLOR	P2 (ITEM 3)
1, 3	RED	1
CONNECTING SCREW	GREEN	2

REVISIONS			
REV	DESCRIPTION	DATE	ENG
A	INITIAL RELEASE	05/29/2024	CWA
B	UPDATED MODEL, & ITEM NO.2 LENGTH UPDATED	12/06/2024	CWA



NOTES:

1. WIRING SHALL BE DONE IN ACCORDANCE WITH TABLE 1 WIRE RUN LIST.

2. MARKING REQUIREMENTS:

A. LABEL(S) SHALL BE MARKED IN ACCORDANCE WITH MIL-STD-130 AS APPLICABLE.

B. LABEL(S) SHALL BE WHITE WITH BLACK TEXT.

C. LABEL(S) SHALL BE PLACED WHERE SHOWN IN DRAWING.

D. ADHESIVE WRAP AROUND LABEL(S) MAY BE USED.

E. LABEL SHALL BE MARKED WITH THE BELOW INFORMATION ONLY. REV MARKING PER PO.

(YYYY=YEAR OF MFG, MM=MONTH OF MFG, DD=DAY OF MFG, XXXX=PO NUMBER)

PN: SN-799-NWM REV.X

CAGE: 1HJX9

LOT: TYYYYMMDDPXXXXX

3. PACKAGING REQUIREMENTS:

A. EACH COMPLETED ASSEMBLY SHALL BE PACKAGED IN A ZIP POLYBAG.

B. CONNECTOR(S) SHALL BE PACKAGED TO PREVENT DAMAGE DURING SHIPPING. BUBBLE WRAP OR PROTECTIVE COVER MUST BE USED.

C. POLYBAG SHALL BE MARKED WITH SUPPLYNET LOGO, PRODUCT QR CODE, PART NUMBER, CAGE CODE, AND LOT NO, PER SN-STD-LBL REQUIREMENTS.

4. WORKMANSHIP REQUIREMENTS:

A. MANUFACTURE TO IAW/WHMA A-620 CLASS 2 REQUIREMENTS.

B. SOLDERING SHALL BE COMPLIANT WITH IAW J-STD-001 AS APPLICABLE.

C. CONNECTOR(S) AND WIRE SHALL BE FREE FROM ANY SCRATCHES, CHIPS, AND DEFECTS.

5. INSPECTION REQUIREMENTS:

A. EACH COMPLETED ASSEMBLY TO BE 100% TESTED FOR SHORTS, CONTINUITY, AND JACKET RESISTANCE (250V @100MOHM MIN.)

B. INSPECT TO IPC/WHMA A-620 CLASS 2 REQUIREMENTS.

BILL OF MATERIALS

ITEM NO.	PART NUMBER	QTY	NAME
1	SN-799-KIT	1	MBITR BATTERY CONNECTOR
2	202C-V04A	16"	CABLE, 20AWG * 2C, 4.6MM OD
3	807-309-06ZNU6-6PY	1	CONNECTOR, MALE

REF. NUMBER: SN1188

UNLESS OTHERWISE SPECIFIED:

DIMENSIONS ARE IN: INCHES  
TOLERANCES: .XX: ± 0.03  
.XXX: ± 0.005  
ANGULAR: .X°: 1°  
.XX°: 0.5°  
BREAK EDGES: .005 - .020  
FILLETS: .005 - .020  
SURFACE FINISH:

GEOMETRIC TOLERANCING  
PER: ASME Y14.5 -2009

MATERIAL: SEE DRAWING NOTES

FINISH: SEE DRAWING NOTES

DO NOT SCALE DRAWING

NAME DATE

DRAWN CWA05/28/2024

CHECKED MOB05/28/2024

COMMENTS:

PROPRIETARY AND CONFIDENTIAL

THE INFORMATION CONTAINED IN THIS  
DRAWING IS THE SOLE PROPERTY OF  
SUPPLYNET, INC. ANY REPRODUCTION  
IN PART OR AS A WHOLE WITHOUT THE  
WRITTEN PERMISSION OF SUPPLYNET INC.  
IS PROHIBITED.

CAGE CODE: 1HJX9

TITLE:

PRC-148/152 BATTERY  
ADAPTOR TO MALE NETT  
WARRIOR

SIZE

B

DWG. NO.

SN-799-NWM

REV

B

SCALE: NA

WEIGHT:

SHEET 1 OF 1